

7 December 2018

ASX MARKET RELEASE

Ausmex Mining Group Limited (ASX: AMG) ("**Ausmex**" or the "**Company**") is pleased to be presenting at the South Australian Exploration and Mining Conference 2018, held at the Adelaide Convention Centre today.

The Powerpoint presentation is attached and click [here](#) for the video presentation.

If you have any difficulties accessing the video presentation, please visit the Company's website <https://ausmexgroup.com.au/all-news-and-media/>.

For further information, contact:

**Matt Morgan**

**Managing Director**

(02) 8315 3268

***MT SURVEY***



**AUSMEX**  
MINING GROUP LTD  
ASX:AMG

# ***Over Burra Large Conductive Structure***

***SAEMC – December 2018***

For personal use only

*Presented by*

*Geoff Kidd – Director, and*

*Nicole Galloway Warland – Project Manager -Burra Region SA*



# Important Notice



## Introduction

The information in this presentation has been prepared by Ausmex Mining Group Limited (the **Company**) for the purpose of providing a high level overview of its business model and experienced management team.

## Forward looking statements

Whilst based on information from sources considered reliable, Ausmex Mining Group Limited (AMG), its directors, employees and consultants do not represent, warrant or guarantee, expressly or impliedly, that the information in this document and presentation is complete or accurate. To the maximum extent permitted by law, AMG disclaims any responsibility to inform any recipient of this document and presentation of any matter that subsequently comes to its notice, which may affect any of the information contained in this document and presentation.

## Disclaimer

Although reasonable care has been taken to ensure that the facts stated in this presentation are accurate and that the opinions expressed are fair and reasonable, no representation or warranty, express or implied, is made as to the fairness, accuracy, completeness or correctness of the information and opinions contained in this presentation and no reliance should be placed on such information or opinions.

To the maximum extent permitted by law, none of the Company nor any of their respective members, directors, officers, employees or agents, advisers,

consultants nor any other person accepts any liability whatsoever for any loss, however arising, from the use of this document or its contents or otherwise arising in connection with it, including, without limitation, any liability arising from fault or negligence on the part of the Company or any of their respective directors, officers, employees or agents.

## Competent Person Statement

Statements contained in this report relating to exploration results and potential is based on information compiled by Ms Nicole Galloway Warland, who is a Member of AIG. Ms Galloway Warland is the Project Manager -Burra Region SA of Ausmex Mining Group Limited and a Geologist who has sufficient relevant experience in relation to the mineralisation styles being reported on to qualify as a Competent Person as defined in the Australasian Code for Reporting of Identified Mineral Resources and Ore Reserves (JORC Code). Ms Galloway Warland consents to the use of this information in this report in the form and context in which it appears.



# Burra, SA – The Sleeping Giant?

“The Monster” Burra Open Cut copper mine produced 10% of world copper in 1851 ~3Mt @ 1.7% Cu

- History of Burra.
- Dept of Energy and Mining.
- Geological Survey of SA.
- AusLAMP initial data.
- University of Adelaide.
  - IMER and the Geology Department re History and Geology.
  - Department of Geophysics and Earth Science re the MT Program.
- MT 10 kms Grid Survey.
- MT as a primary exploration tool for ground that is under cover.

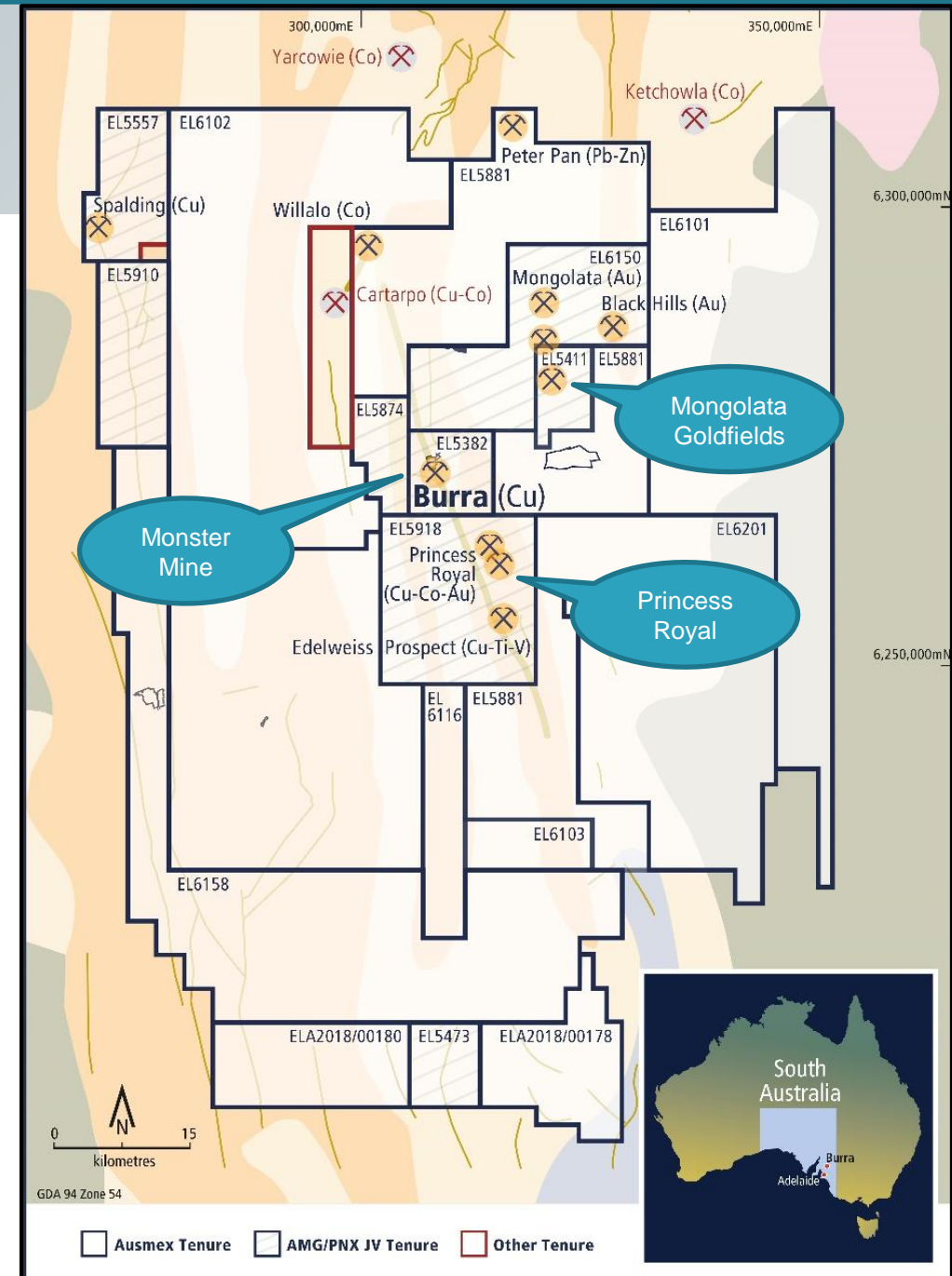


# Copper Ore in the Burra Monster Mine open Cut

# Burra, SA – Cobalt-Copper-Gold

## Strategic tenement holding

- ❖ Ausmex has access to ~7,400 km<sup>2</sup> covering the recently announced large conductive target by Geoscience Australia led AusLamp programme (*Refer ASX 13<sup>th</sup> March 2018*).
- ❖ Farm-in to JV with PNX Metals.
- ❖ Focus on Cobalt, Copper & Gold.
- ❖ Multiple historic high grade copper and gold workings
- ❖ Ausmex believe “under explored”
- ❖ Strategic exploration alliance with University of Adelaide
- ❖ REE analysis by Prof. Ken Collerson (*Refer ASX 4<sup>th</sup> October 2018*)
- ❖ Large Intrusion related - IOCG targets
- ❖ Regional MT Geophysical Exploration program was completed late 2018

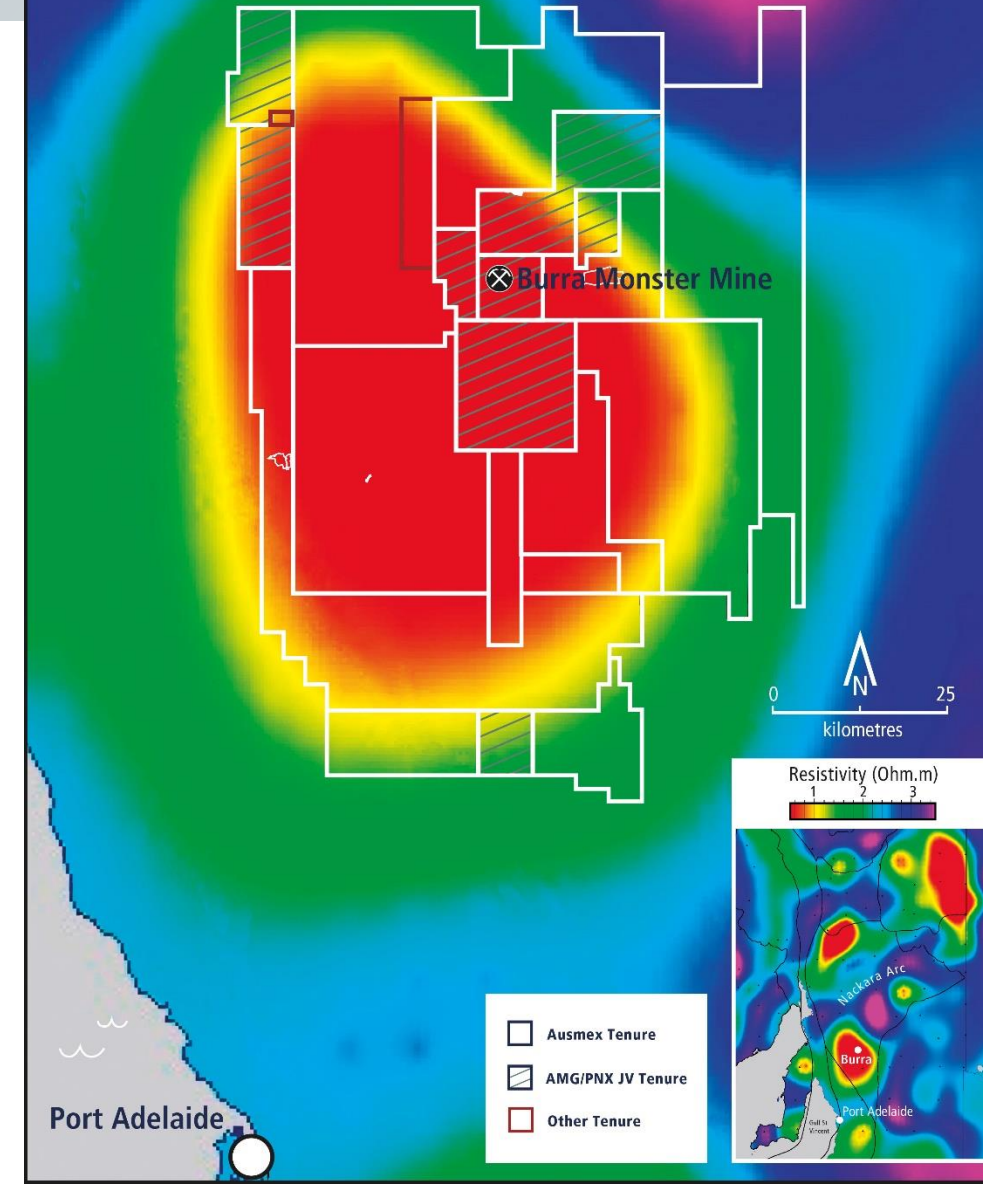




# Auslamp large conductive structure ~80km x 100km dimension

- AusLAMP identified a large conductive structure below Ausmex's Exploration Tenure at Burra.
- AusLAMP conductive structures below Burra are of similar magnitude to that identified in the Gawler Craton under the World Class IOCG deposits at Olympic Dam, Carrapateena and Prominent Hill.
- *"The Burra deep conductive target up to 80km wide and 100km long may indicate a large heat and fluid source for the known Burra High Grade Copper, Gold and Cobalt mineralisation".*

AusLAMP- 20km Depth Slice



# MT SURVEY – 10km Grid



Collaborative Project between Ausmex and the University of Adelaide



Prof. Graham Heinson, Ben Kay, Nicole Galloway Warland and Geoff Kidd



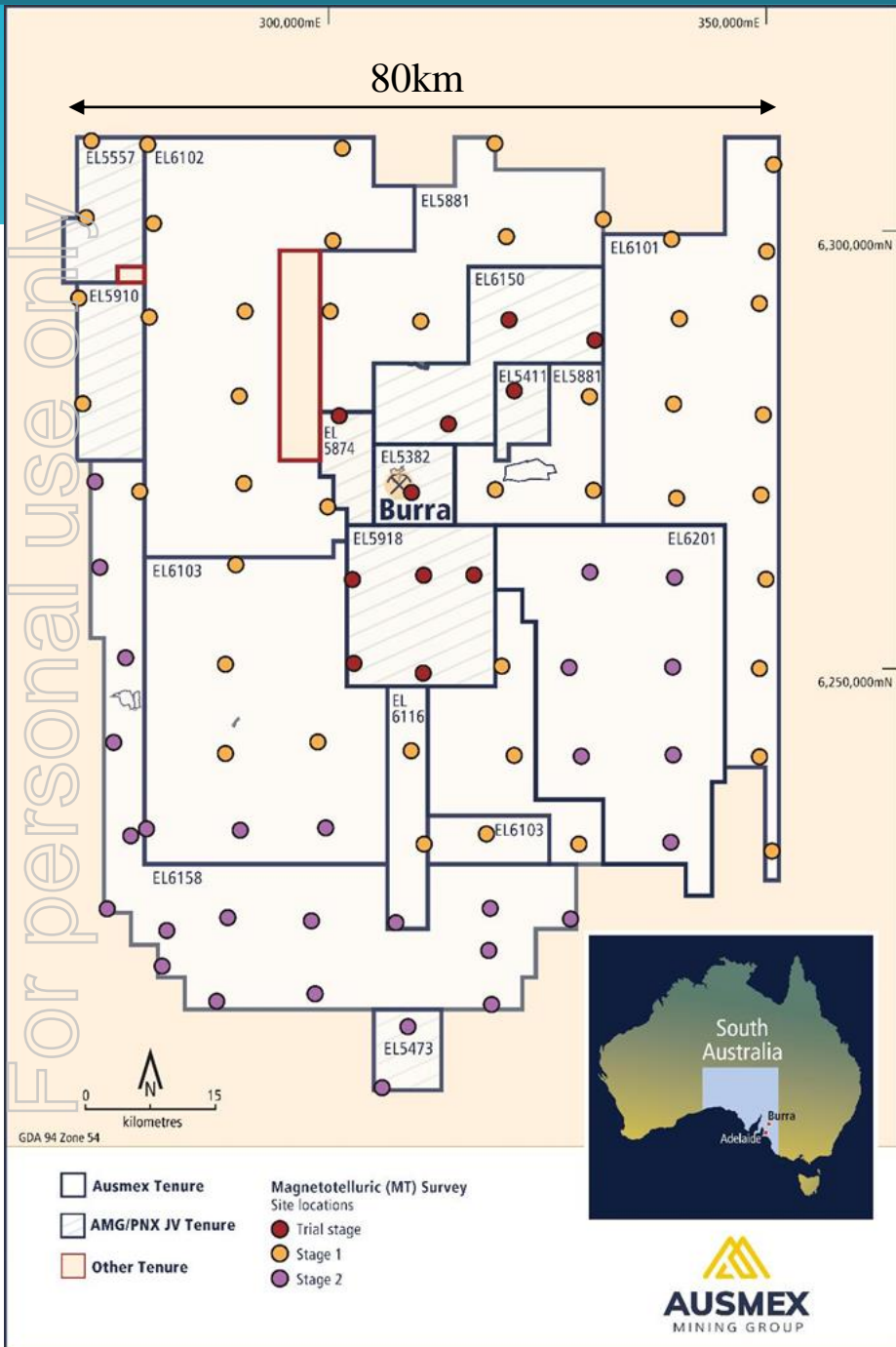
MT 'Survey' as a Primary Exploration Tool



Survey Completed October 2018



3D Modelling in-progress



# MT SURVEY – Data Collection

## LAND ACCESS

- Rich Agricultural and Grazing district
- 95 NOE served

## NOISE - proximity to Infrastructure

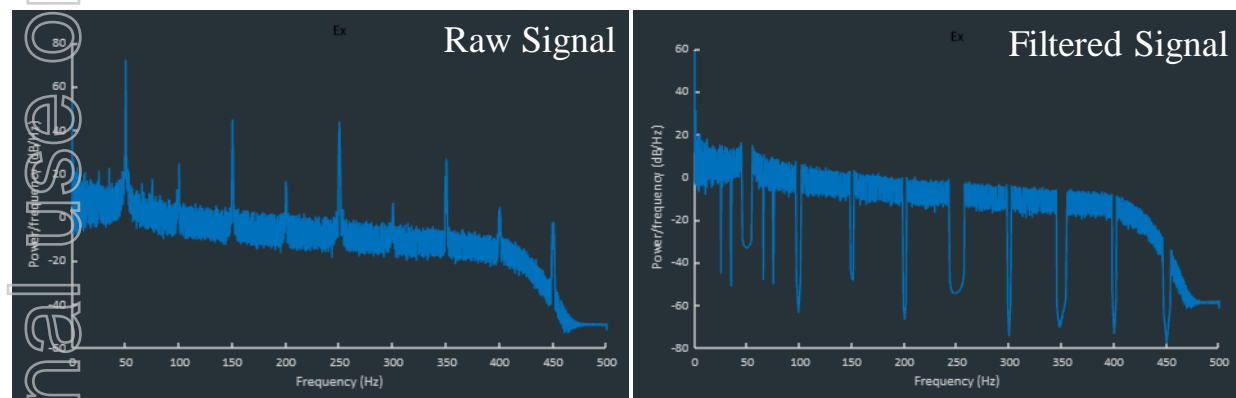
- Townships
- Windfarms - Waterloo, Mt Bryan & Hallett
- Gas Pipeline
- SA Water - Morgan to Whyalla Pipeline
- SA Power – HT Transmission Lines





# MT SURVEY – Data processing and Filtering of Noise

## MT Site 70

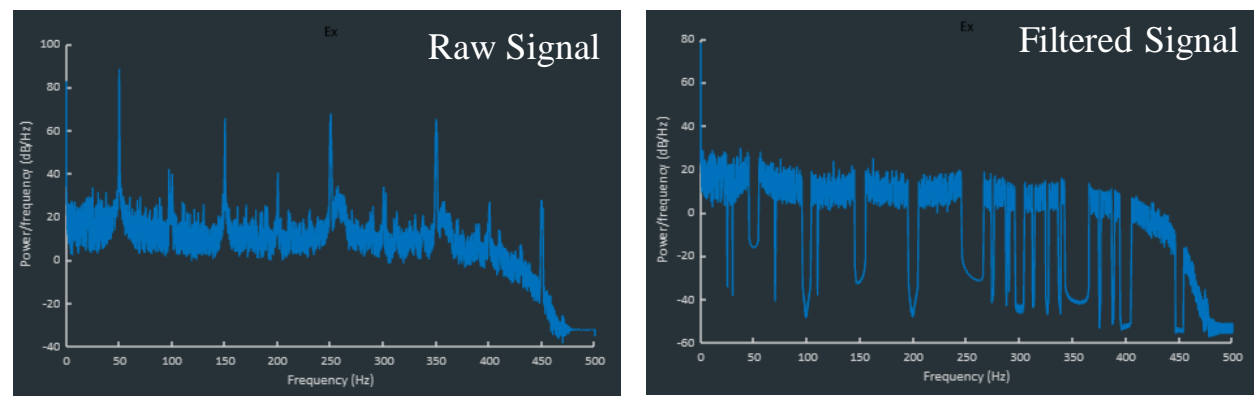


The two images show the power spectra for 90 mins of data from one of the electric channels (N-S)

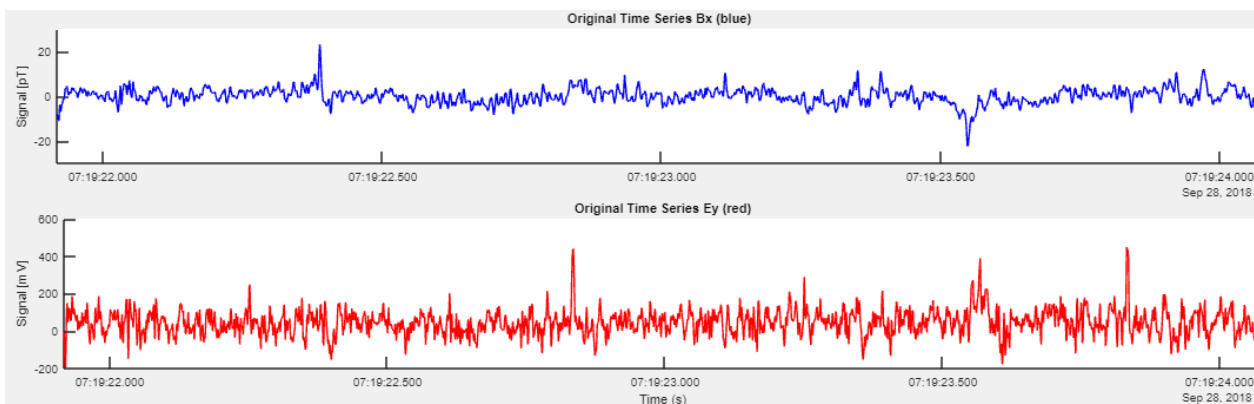


And the time series image above shows a zoomed in view of 2 seconds from of the filtered data. Notice how the coherency between the filtered signals is easily distinguishable and when processed produces a very good result.

## MT Site 17



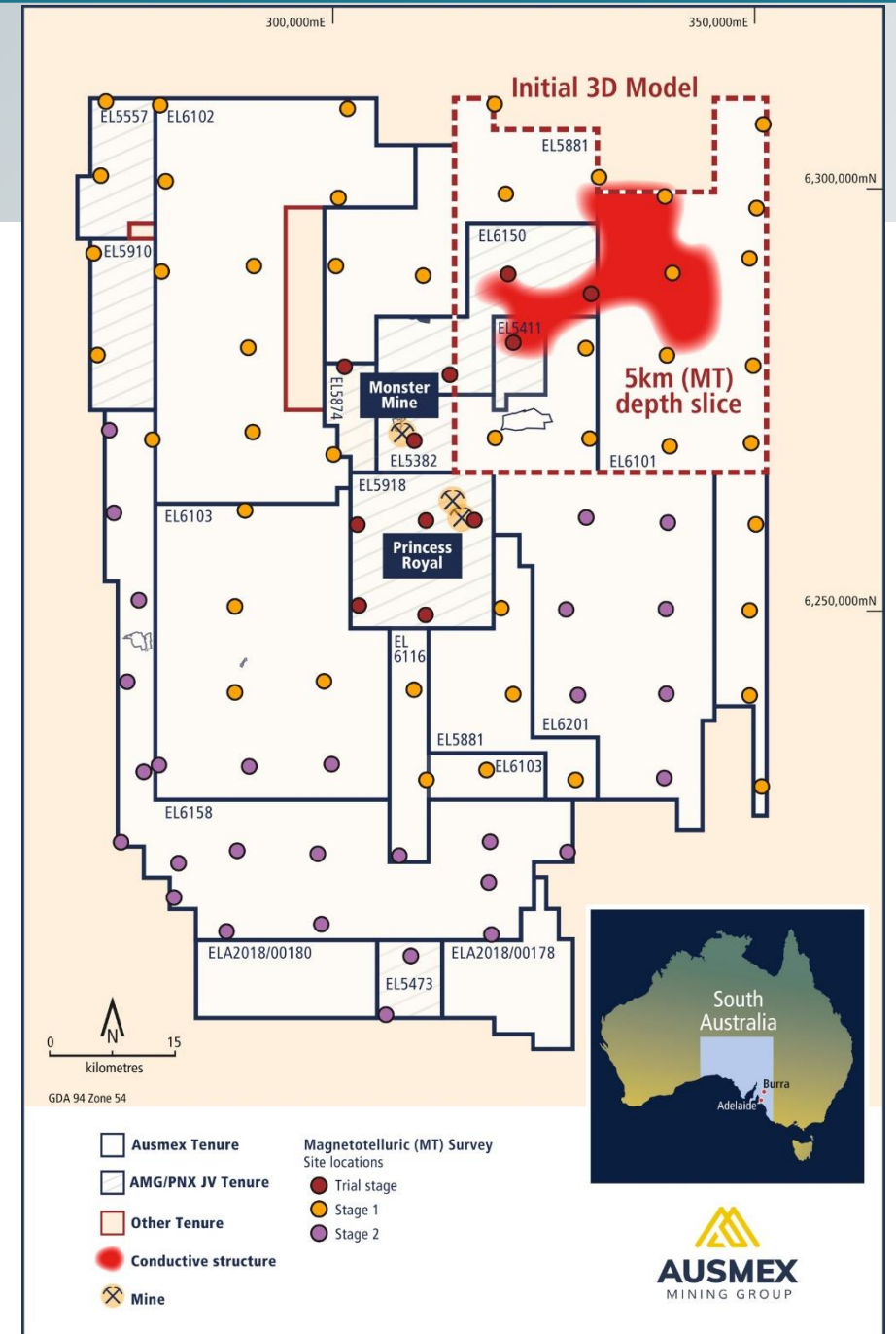
The two images show the power spectra for 90 mins of data from one of the electric channels (N-S)



The image above shows a zoomed in view of 2 seconds of the filtered time series for the same site. Here the coherency between the signals is not as apparent and leads to difficulty in the processing stage with the resultant being of low confidence.

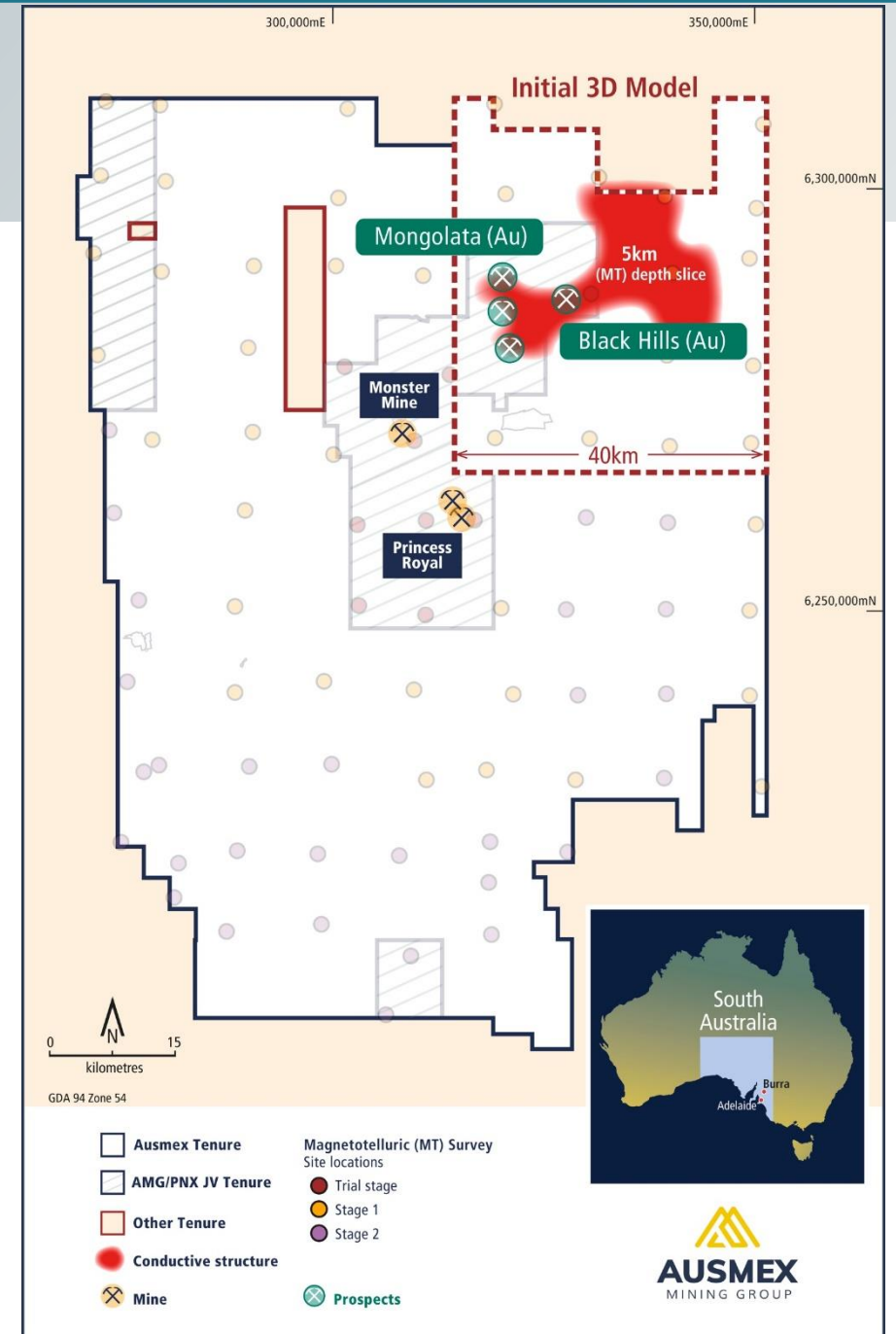
# MT SURVEY – 3D Modelling

- 3D modelling currently in progress
- Using the National Computational Infrastructure - NCI
  - fastest supercomputer in the southern hemisphere
- Initial 3D model of North East Corner (University of Adelaide)
  - Model parameters
  - Smoothing factors
- NE corner represents ~20% of MT Survey coverage

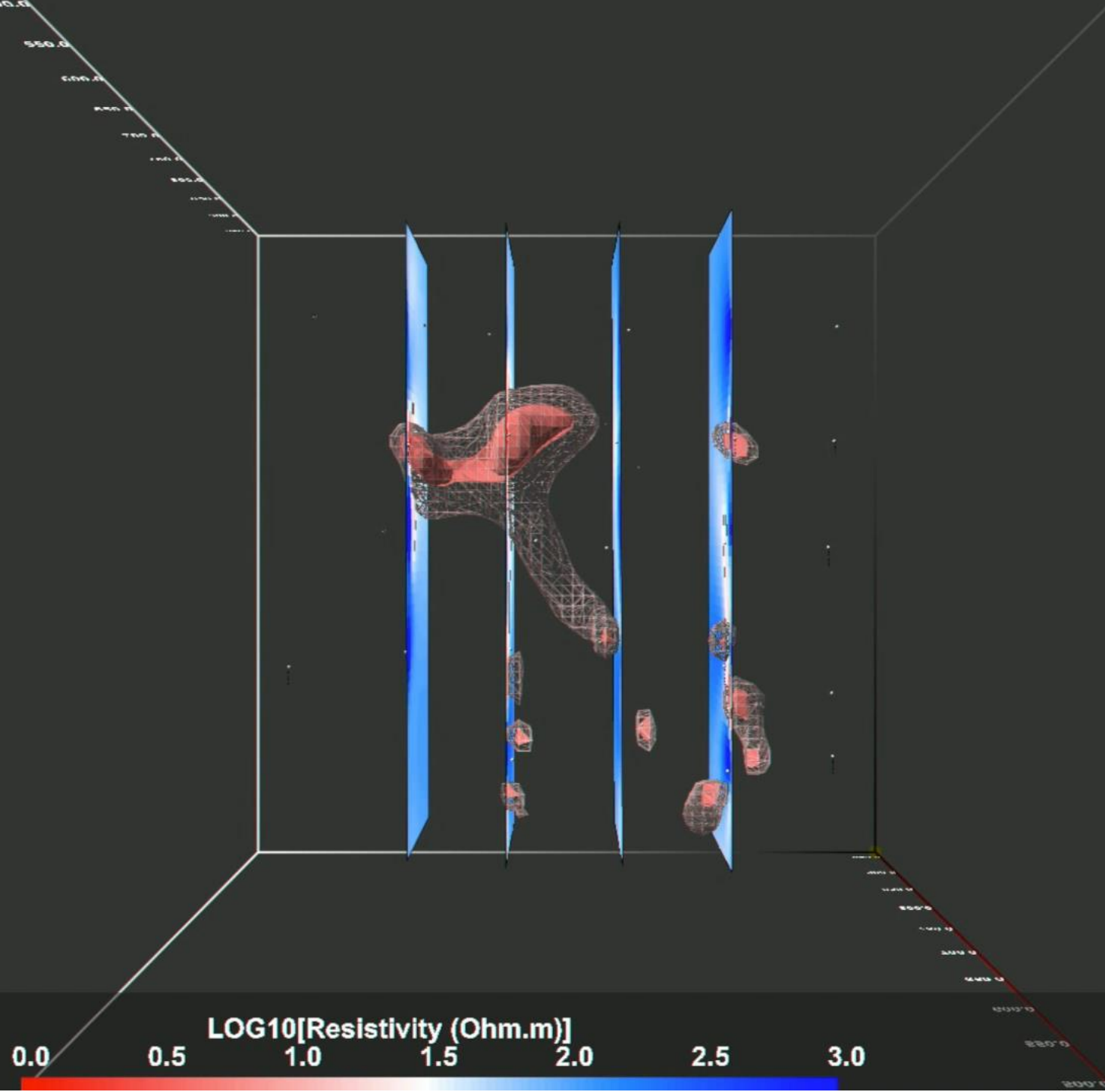


# MT SURVEY – 3D Modelling

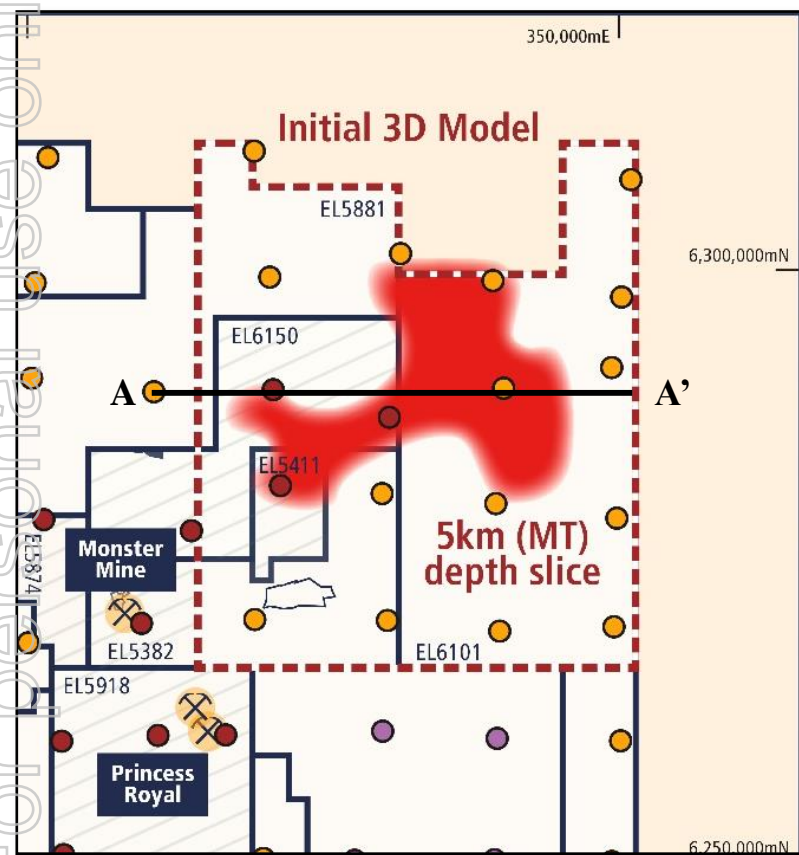
- Identified new conductive anomaly - unexplored area
- Oblique to N-S trending geology
- Correlation with Mongolata Goldfields and Black Hills
  - **Mongolata Goldfields:**
    - production of 11,127 ounces of gold from 7,684 tonnes treated (average grade 45g/t) from 1930 – 1954 (ASX:PNX 30/10/13)
  - **Black Hills Gold Prospect:**
    - PCRB014: 39m @ 3.77g/t Au from 65m, including 6m @ 23.35g/t Au
    - PCRB009: 5m @ 15.00g/t Au, including 3m @ 24.91 g/t Au (ASX:PNX 19/9/18)



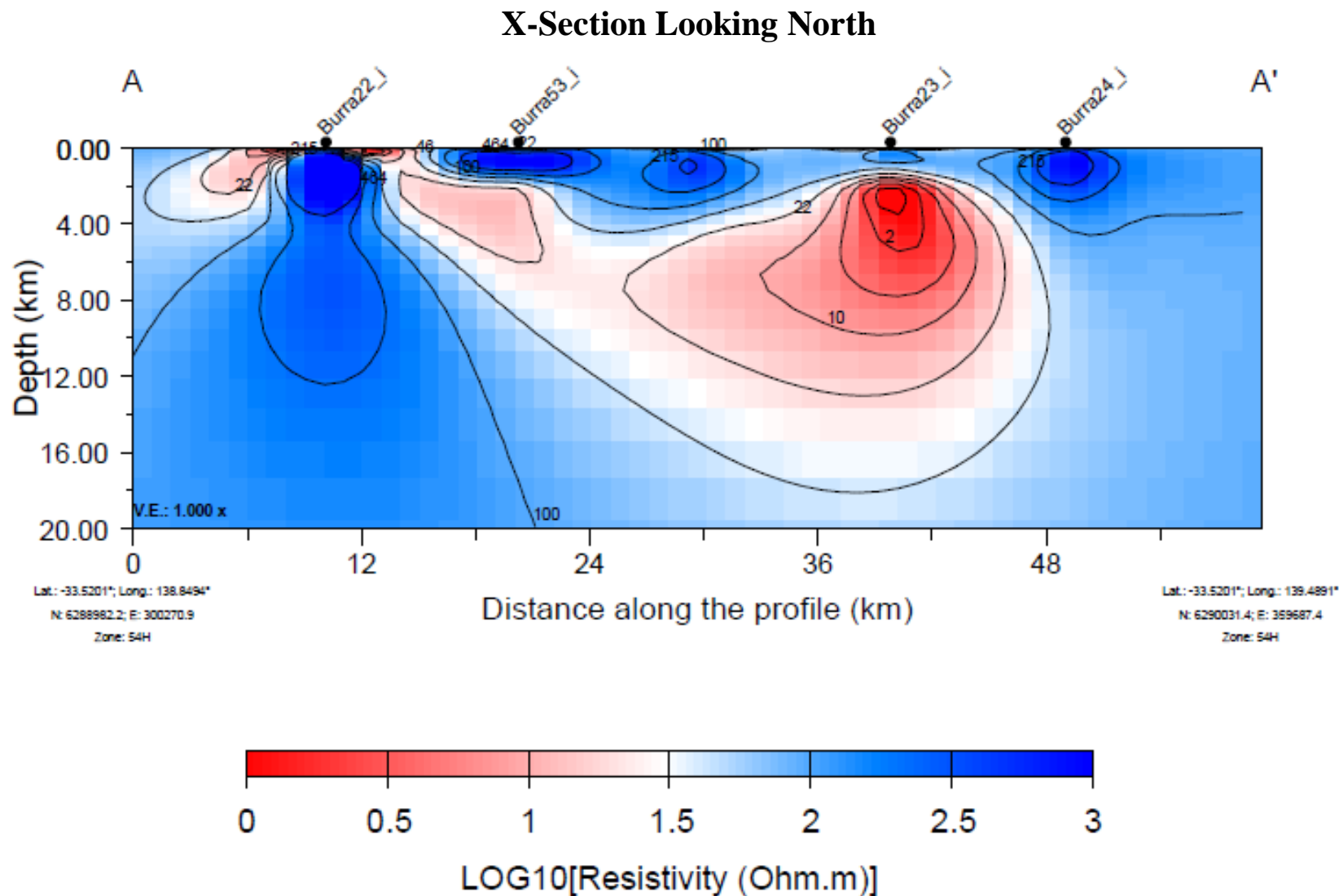




# MT SURVEY – Cross-Section



X-Section Location North East Corner

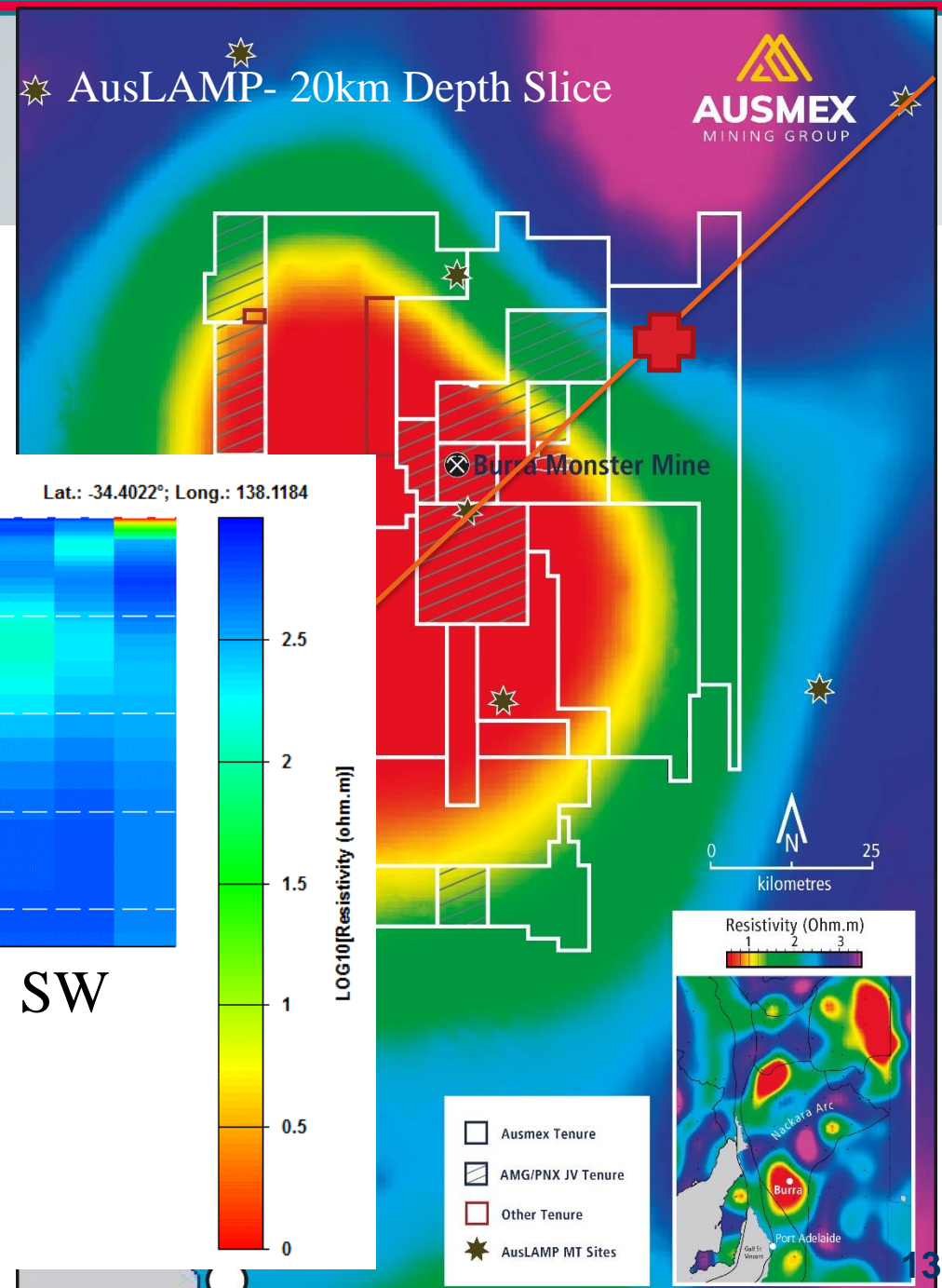
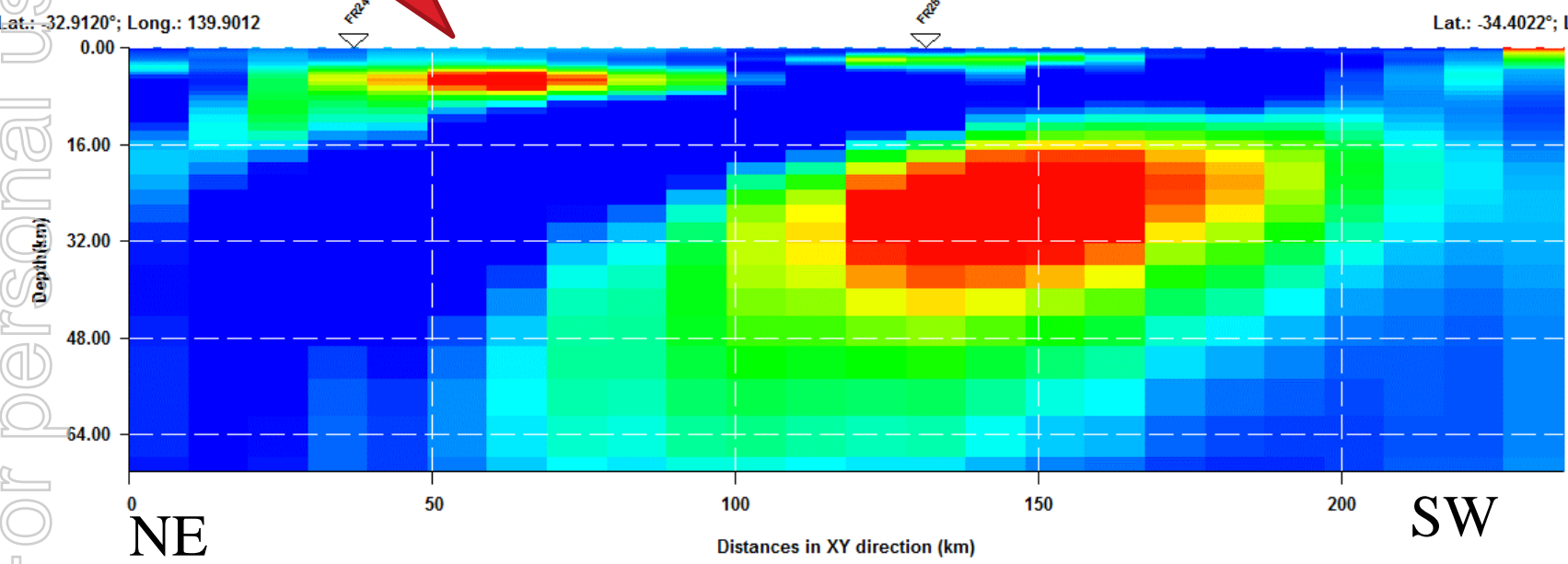


For personal use only

# AusLAMP- NE Structure

North East  
Conductive  
Structure

Section looking South East





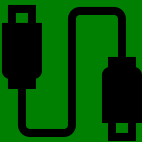
# MT SURVEY – Next Step



3D Model - Complete and Review



Infill Traverses across key structures-1km spacing  
(AMT to optimise targeting shallow minable structures)



Consider IP or EM over Targets



Drill Test Targets (Ausmex is preparing to drill test IOCG target in Cloncurry that it shares with Newcrest. Once that drilling is complete & step 2 & 3 above are complete Burra drilling will commence ).

# MT SURVEY – Thank you

