



Innovations that work.™

ACN 109 200 900

AUSTRALIAN SECURITIES EXCHANGE ANNOUNCEMENT

26 November 2019

EDENCRETE® - GEORGIA DOT- FIRST BRIDGE TRIAL IN GEORGIA

GDOT - First EdenCrete® bridge trial in Georgia has commenced

Eden Innovations Ltd (“Eden”) (ASX:EDE) is pleased to advise that the first bridge trial of EdenCrete® enriched concrete in Georgia by the Georgia Department of Transportation (GDOT) has commenced on a bridge that spans the Little River located in Gainesville, Georgia (see Figures 1-3). The trial that will be spread over two months, involves the replacement of the decking on three spans of the bridge.



Figure 1. Bridge over the Little River

The laying of the decking on the first span of the bridge deck was completed on 21st November 2019 (see Figures 2 and 3), requiring approximately 180 cubic yards of concrete

For personal use only

For personal use only

dosed with EdenCrete® at 2 gallons per cubic yard of concrete. Placement and finishing went extremely well, and the concrete comfortably passed the initial laboratory compressive strength tests after 24 hours. Further laboratory strength testing will be carried out.

The second and third spans of new decking, both of which will also contain EdenCrete®, are planned to be placed during December 2019 and early in 2020 respectively.



Figure 2. Bridge over Little River showing re-enforcing steel included in bridge decking

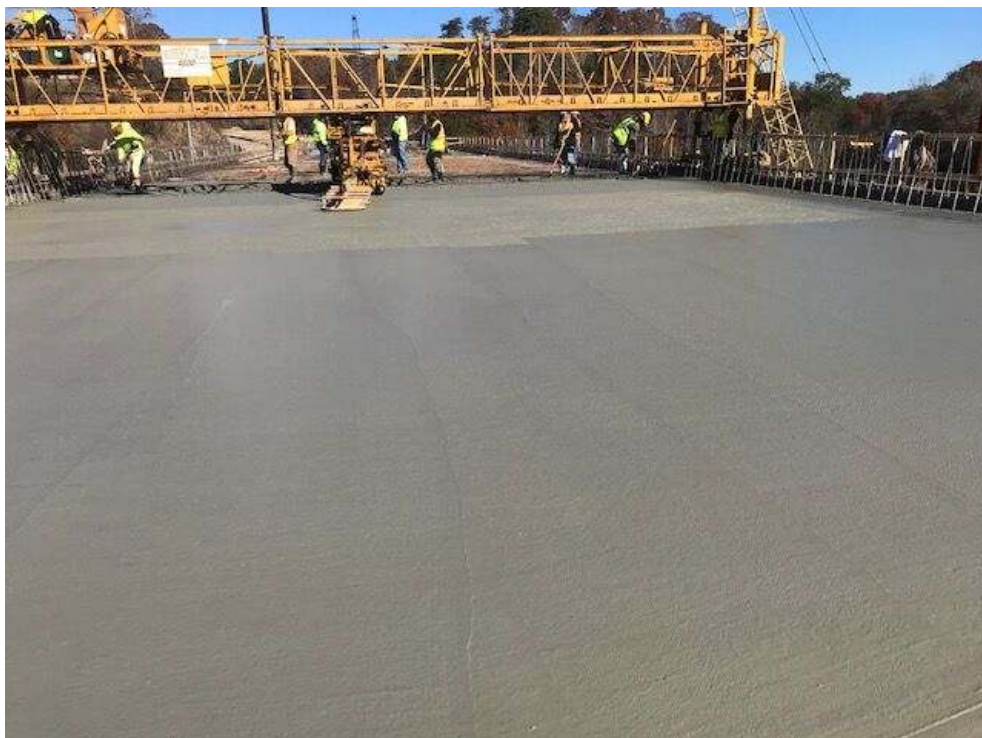


Figure 3. Bridge over Little River showing freshly lain concrete bridge decking

Eden understands that the new decking will be assessed for up to two years but it may be a shorter period. Repairing and replacing bridges, which are nearly all constructed with concrete, forms a major part of GDOT's annual budget. The successful completion and assessment of this bridge trial offers Eden a strong opportunity to greatly increase the number of projects in Georgia in which EdenCrete® will be used.

In 2015, the Federal Highway Administration estimated that 2,600 bridges in Georgia (out of a total of 14,768 bridges), or 17.6% of all bridges in Georgia, were structurally deficient or functionally obsolete ¹.

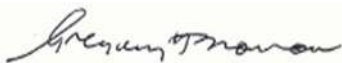
The link below ² to a list of more than 180 GDOT bridge projects that are already planned to be undertaken over the next 5 years, gives some idea of the number and value of the forthcoming GDOT bridge projects and the potential significance to Eden of the current GDOT EdenCrete® bridge trial.

1. [USDOT-transportation.gov/briefing-room/dot-fact-sheets-highlight-grim-state-us-roads-and-bridges - 2015](https://www.usdot.gov/briefing-room/dot-fact-sheets-highlight-grim-state-us-roads-and-bridges-2015)
2. [www.garivers.org/images/Water Trail Website/Bridge_Projects_final.pdf](http://www.garivers.org/images/Water_Trail_Website/Bridge_Projects_final.pdf)

EdenCrete® Background

EdenCrete® is Eden's 100% owned, proprietary carbon-strengthened concrete additive, that improves many of the performance characteristics of concrete making it highly suitable for use in the construction and maintenance of concrete roads, bridges, dams, railways, airports, ports and other infrastructure.

EdenCrete® is already in regular commercial use in the USA in ready-mix concrete, shotcrete and precast operations and has a wide potential for use in many concrete applications including for high-rise building construction, marine and coastal applications, applications in locations subject to freezing conditions, water storage and pipelines, and pre-fabricated concrete structures and products.



Gregory H. Solomon
Executive Chairman

For personal use only