

26 May 2021

**ASX Announcement**

**MINING PROPOSAL APPLICATION SUBMITTED**

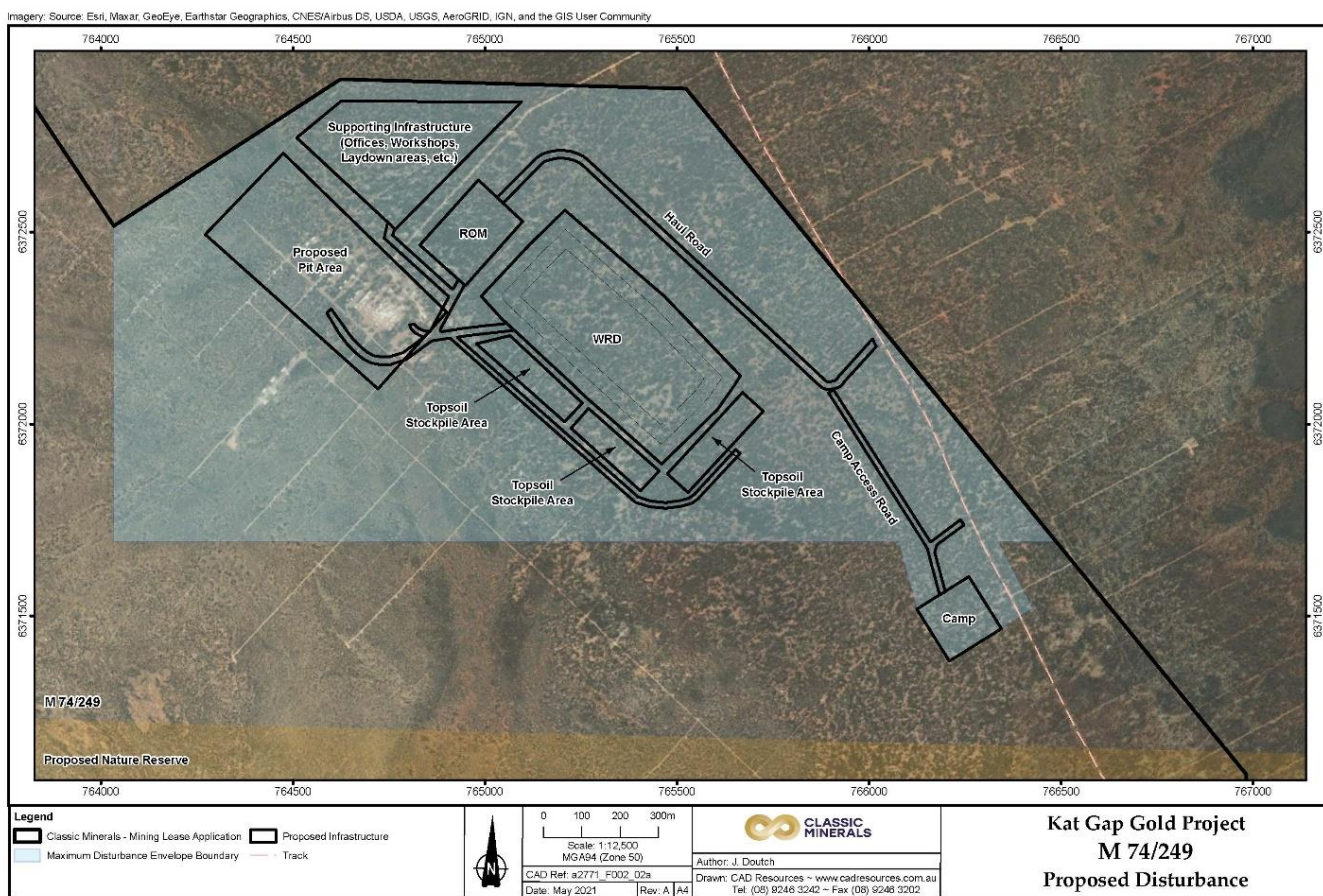
**Highlights:**

- Following the grant of the Kat Gap Mining Lease (M74/249) by the Department of Mines, Industry Regulation and Safety (**DMIRS**) on 22 April 2021, CLZ has now lodged the two remaining environmental approval applications to DMIRS for the proposed Kat Gap Mine development footprint.
- Classic Minerals Ltd continues to advance the planned development of its 100% owned flagship Kat Gap Gold Project which lies 170km south of Southern Cross and has an initial JORC inferred resource of 92,869 oz @ 2.96 g/t Au with conventional cyanide leach process proving 95-96% recovery from both fresh and oxide samples<sup>1</sup>.
- These applications include the Native Vegetation Clearing Permit application and the Mining Proposal (including Mine Closure Plan) application.
- CLZ expects the process to take around 3-months to conduct the assessment process in order for DMIRS to approve these applications.
- Upon receiving approval for the Mining Proposal, CLZ will look to **immediately commence mining and production operations** and process the ore via its Gekko plant which has a 30 tonne per hour (tph) capacity and is scalable to a Gekko Python size plant with a processing capacity of 250 tph.
- The Company will update shareholders regarding agreements to access regional infrastructure and water access.

---

<sup>1</sup> ASX announcement dated 10 Aug 2020

Classic Minerals Limited (ASX: CLZ, “the Company” or “CLZ”) is pleased to announce lodgment of the remaining two required environmental approval applications to DMIRS for the proposed Kat Gap Mine development footprint (refer to proposed site layout plan below).



Following the recent grant of the Kat Gap Mining Lease (M74/249) by the Department of Mines, Industry Regulation and Safety (DMIRS) on 22 April 2021, both the Native Vegetation Clearing Permit application and the Mining Proposal (including Mine Closure Plan) application have been lodged.

It is expected the process will take around 3 months for DMIRS to conduct the assessment process in order to approve these applications. Should this expected time frame hold true, **Classic Minerals will** begin to generate potential revenue via the processing of the ore from its 100% owned flagship Kat Gap Gold Project

Approval of the above-mentioned applications being the final significant hurdles prior to the commencement of production, the Company looks forward to the imminent commencement of mining and production operations.

The Company will also update shareholders regarding agreements to use regional infrastructure and water access, which is another milestone to be achieved ahead of the commencement of mining and production operations.

The Chairman, John Lester said *“Having now lodged applications for the final government approvals required prior to the commencement of mining operations at our flagship Kat Gap Gold Project, the Company continues to meet the key milestones required to formally transform Classic from an explorer to a miner. We look forward to updating shareholders as additional milestones are reached”.*

*This announcement has been approved by the Board.*

For further information, please contact:

Company Secretary

Madhukar Bhalla

[contact@classicminerals.com.au](mailto:contact@classicminerals.com.au)

#### **ABOUT THE FORRESTANIA GOLD PROJECT**

The FGP Tenements (excluding Kat Gap) are registered in the name of Reed Exploration Pty Ltd, a wholly owned subsidiary of ASX listed Hannans Ltd (ASX: HNR). Classic has acquired 80% of the gold rights on the FGP Tenements from a third party, whilst Hannans has maintained its 20% interest in the gold rights. For the avoidance of doubt Classic Minerals Ltd owns a 100% interest in the gold rights on the Kat Gap Tenements and also non-gold rights including but not limited to nickel, lithium and other metals.



Classic has inferred and indicated Mineral Resources of **8.24 Mt at 1.52 g/t for 403,906 ounces of gold**, classified and reported in accordance with the JORC Code (2012), with a recent Scoping Study (see ASX Announcement released 2nd May 2017) suggesting both the technical and financial viability of the project. The current post- mining Mineral Resource for Lady Ada, Lady Magdalene and Kat Gap is tabulated below.

Additional technical detail on the Mineral Resource estimation is provided, further in the text below and in the JORC Table 1 as attached to ASX announcements dated 18<sup>th</sup> December 2019, 21<sup>st</sup> January 2020, and 20 April 2020.

Prospect	Indicated			Inferred			Total		
	Tonnes	Grade (Au g/t)	Ounces Au	Tonnes	Grade (Au g/t)	Ounces Au	Tonnes	Grade (au)	Ounces
Lady Ada	257	2.01	16,600	1,090,800	1.23	43,100	1,348,100	1.38	59,700
Lady Magdalene				5,922,700	1.32	251,350	5,922,700	1.32	251,350
Kat Gap				975,722	2.96	92,856	975,722	2.96	92,856
<b>Total</b>	<b>257</b>	<b>2.01</b>	<b>16,600</b>	<b>7,989,222</b>	<b>1.50</b>	<b>387,306</b>	<b>8,246,522</b>	<b>1.52</b>	<b>403,906</b>

*Notes:*

1. *The Mineral Resource is classified in accordance with JORC, 2012 edition*
2. *The effective date of the mineral resource estimate is 20 April 2020.*
3. *The mineral resource is contained within FGP tenements*
4. *Estimates are rounded to reflect the level of confidence in these resources at the present time.*
5. *The mineral resource is reported at 0.5 g/t Au cut-off grade*
6. *Depletion of the resource from historic open pit mining has been considered*

*Forward Looking Statements*

*This announcement may contain certain “forward-looking statements” which may not have been based solely on historical facts, but rather may be based on the Company’s current expectations about future events and results. Where the Company expresses or implies an expectation or belief as to future events or results, such expectation or belief is expressed in good faith and believed to have reasonable basis. However, forward looking statements are subjected to risks, uncertainties, assumptions and other factors, which could cause actual results to differ materially from future results expressed, projected or implied by such forward-looking statements. Such risks include, but are not limited to Resource risk, metals price volatility, currency fluctuations, increased production costs and variances in ore grade or recovery rates from those assumed in mining plans, as well as political and operational risks in the Countries and States in which we operate or sell product to, and governmental regulation and judicial outcomes. For a more detailed discussion of such risks and other factors, see the Company’s annual reports, as well as the Company’s other filings. Readers should not place undue reliance on forward looking information. The Company does not undertake any obligation to release publicly any revisions to any “forward-looking statements” to reflect events or circumstances after the date of this announcement, or to reflect the occurrence of unanticipated events, except as may be required under applicable securities laws.*

*Competent Persons Statement*

*The information contained in this report that relates to Mineral resources and Exploration Results is based on information compiled by Dean Goodwin, a Competent Person who is a Member of the Australian Institute of Geoscientists (AIG). Mr Goodwin is a consultant exploration geologist with Reliant Resources Pty Ltd and consults to Classic Minerals Ltd. Mr. Goodwin has sufficient experience that is relevant to the style of mineralisation and the type of deposit under consideration, and to the activity being undertaken to qualify as a Competent Person as defined in the 2012 Edition of the “Australasian Code for Reporting of Exploration Results, Mineral Resources and Ore Reserves”. Mr. Goodwin consents to the inclusion in this report of the matters based on his information in the form and context in which it appears.*