



Bonds:

Month Update: June 2026



Month: Jun-26

Trading days: 21

Period ending: Tuesday, 30 June 2026

Snapshot by category

Australian Bond Segment	Number listed	Market Cap (\$m)	Trades Total (#)	Trades per day (#)	Volume (#)	Value (\$m)
Australian Government Bonds	34	1,743	2,860	136	928,832	\$88.82
Corporate bonds	4	573	476	23	297,753	\$29.24
Structured Income Notes	5	1,679	2,307	110	483,892	\$47.45
Total	43	3,995	5,643	269	1,710,477	\$165.51

Recent listings

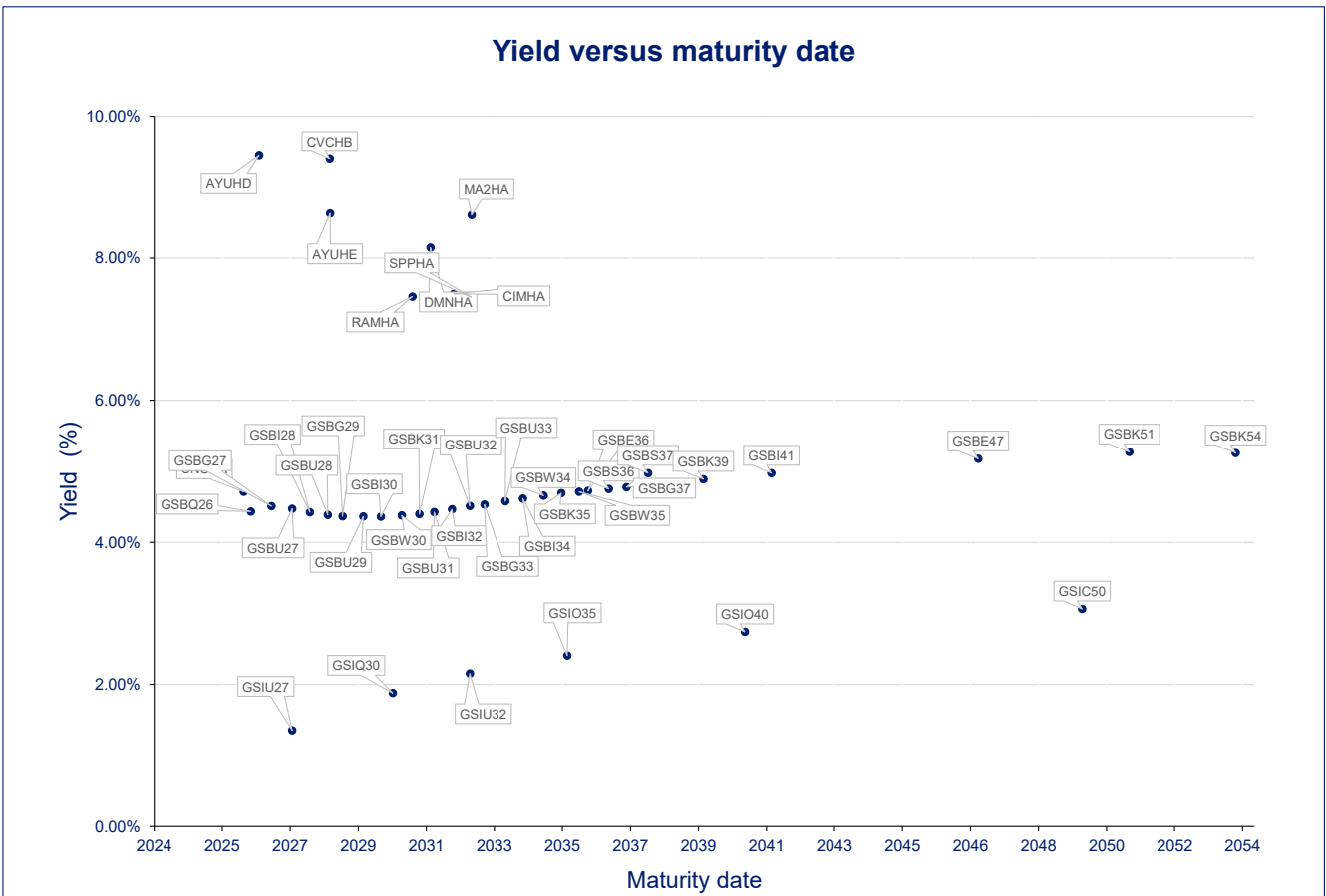
Entity	ASX Code	Size (\$m)	Type	Listing Date	Issue Price	Maturity / Conv / Reset	Interest Rate / Dividend	Distribution Frequency	Last Price
Commonwealth of Australia	GSBS37	\$17,900	Government Bonds - Fixed R	02-Feb-2026	\$100.00	21-Oct-2037	4.75%	S/A	\$100.59
Ma Credit Portfolio Holdings I	MA2HA	\$230	Structured Income Notes	16-Dec-2025	\$100.00	10-Dec-2032	7.55%	Monthly	\$94.20
CVC Limited	CVCHB	\$75	Corporate Bonds	11-Dec-2025	\$100.00	11-Dec-2028	8.79%	Qtrly	\$99.77
Stonepeak-Plus Infra Debt Li	SPPHA	\$400	Structured Income Notes	10-Dec-2025	\$100.00	06-Dec-2032	7.55%	Monthly	\$102.70
Dominion Investment Group I	DMNHA	\$425	Structured Income Notes	17-Oct-2025	\$100.00	11-Oct-2032	7.30%	Monthly	\$96.00
RAM Income Capital Ltd	RAMHA	\$300	Structured Income Notes	15-Oct-2025	\$100.00	10-Apr-2032	7.30%	Monthly	\$100.00
Challenger IM Capital Limitec	CIMHA	\$350	Structured Income Notes	10-Sep-2025	\$100.00	06-Sep-2032	7.05%	Monthly	\$98.18
Commonwealth of Australia	GSBS36	\$23,400	Government Bonds - Fixed R	01-Aug-2025	\$100.00	21-Oct-2036	4.25%	S/A	\$95.68
Commonwealth of Australia	GSBE36	\$26,300	Government Bonds - Fixed R	13-Feb-2025	\$100.00	21-Mar-2036	4.25%	S/A	\$97.61

*BBSW = Bank Bill Swap Rate

† As of the date of this report this security has not traded, the Last Price reflects the Issue Price

Most actively traded securities by value

ASX code	Security type	Value (\$)	Value (%)	Volume	Volume (%)
AYUHE	Corporate Bonds	\$25,636,283	15.49%	261,525	15.29%
GSBK54	Government Bonds - Fixed Rate	\$17,426,670	10.53%	188,663	11.03%
GSBS37	Government Bonds - Fixed Rate	\$13,657,201	8.25%	137,401	8.03%
GSBU32	Government Bonds - Fixed Rate	\$11,736,834	7.09%	139,419	8.15%
GSBG33	Government Bonds - Fixed Rate	\$11,425,242	6.90%	114,591	6.70%
		\$79,882,230.82	48.26%	841,599	49.20%





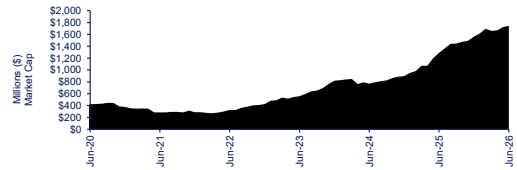
Bonds:

Month Update: June 2026

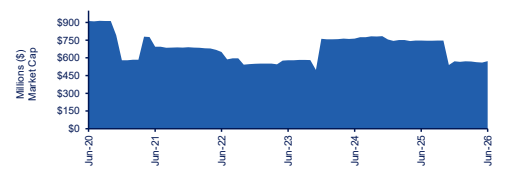


Market Capitalisation Trends

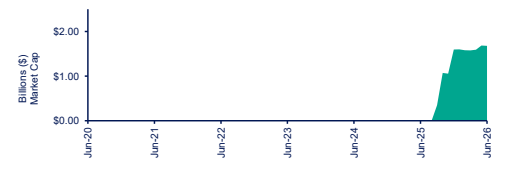
Government bonds	Last 12 months			Last month	
	Jun-25	Jun-26	% change	May-26	% change
Market cap (\$m)	\$1,287.44	\$1,742.79	35.4%	\$1,723.45	1.1%
Number listed (actual)	35	34	-2.9%	34	0.0%
Monthly volume	1,339,753	928,832	-30.7%	1,239,882	-25.1%
Monthly transactions	2,732	2,860	4.7%	2,579	10.9%
Monthly value (\$m)	\$129.81	\$88.82	-31.6%	\$115.88	-23.4%



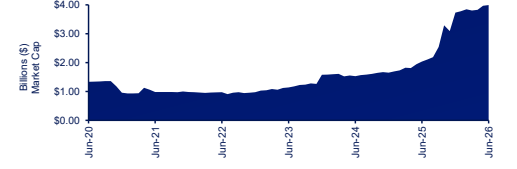
Corporate bonds	Last 12 months			Last month	
	Jun-25	Jun-26	% change	May-26	% change
Market cap (\$m)	\$746.77	\$572.72	-23.3%	\$559.96	2.3%
Number listed (actual)	5	4	-20.0%	4	0.0%
Monthly volume	47,404	297,753	528.1%	118,718	150.8%
Monthly transactions	322	476	47.8%	376	26.6%
Monthly value (\$m)	\$4.79	\$29.24	509.8%	\$11.78	148.1%



Structured Income Notes	Last 12 months			Last month	
	Jun-25	Jun-26	% change	May-26	% change
Market cap (\$m)	\$0.00	\$1,679.09	-	\$1,685.38	-0.4%
Number listed (actual)	-	5	-	5	0.0%
Monthly volume	NA	483,892	-	292,503	65.4%
Monthly transactions	NA	2,307	-	1,147	101.1%
Monthly value (\$m)	NA	\$47.45	-	\$29.01	63.6%

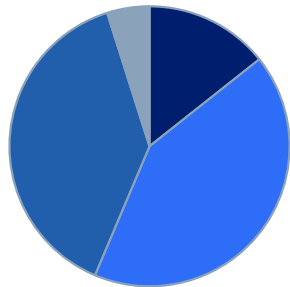


Total bond market	Last 12 months			Last month	
	Jun-25	Jun-26	% change	May-26	% change
Market cap (\$m)	\$2,034.22	\$3,994.60	96.4%	\$3,968.79	0.7%
Number listed (actual)	40	43	7.5%	43	0.0%
Monthly volume	1,387,157	1,710,477	23.3%	1,651,103	3.6%
Monthly transactions	3,054	5,643	84.8%	4,102	37.6%
Monthly value (\$m)	134.6	\$165.51	23.0%	\$156.67	5.6%



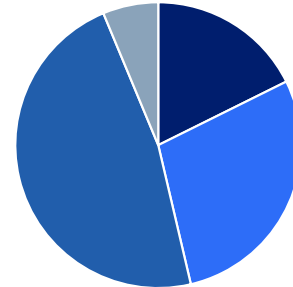
Bonds market cap breakdown by type

- Corporate Bonds, \$573 m
- Structured Income Notes, \$1,679 m
- Government Bonds - Fixed Rate, \$1,547 m
- Government Bonds - Inflation Linked, \$195 m

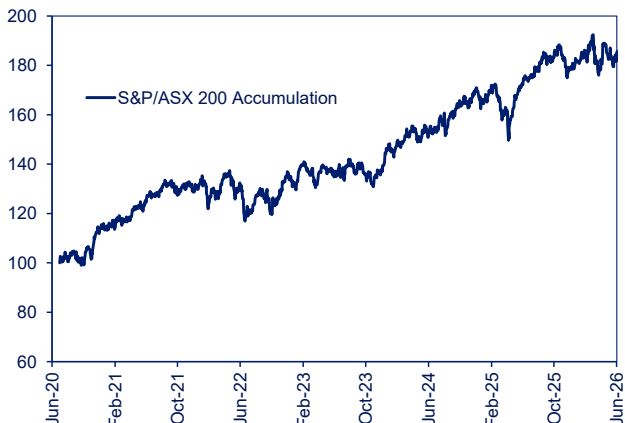


Bonds breakdown by traded value

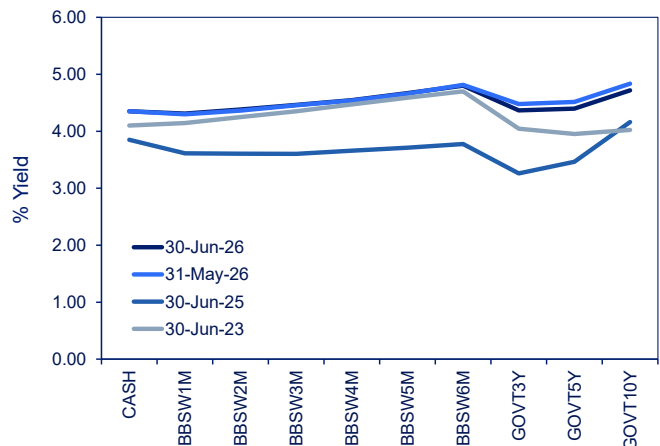
- Corporate Bonds, \$29,239 k
- Structured Income Notes, \$47,450 k
- Government Bonds - Fixed Rate, \$78,435 k
- Government Bonds - Inflation Linked, \$10,385 k



S&P indices - Rebased to 100



Australian yield curve





Spotlight on bonds:

Month update: June 2026



ASX profiles			Detail							Activity					Prices				Returns						
ASX code	Issuer	Description	ASX listed date	Maturity / Conv / Reset	Coupon ²	Payment frequency	Payment rank	Issuer type	Announced Ex-date	Announced payment date	Mkt cap (\$m)	Traded value (\$)	Traded volume	Number of trades	Monthly liquidity % ³	Last	Year high	Year low	Yield (%) ¹	1 month price return	1 year price return	3 year price return	5 year price return	10 year price return	
Government bonds - Fixed rate																									
GSBQ26	Commonwealth of Australia	Treasury Bond 0.50% 21-09-26 Semi	30-Sep-20	21-Sep-26	0.50%	S/A	Unsecured	Sovereigns	10-Sep-26	21-Sep-26	\$11.04	\$247,348.00	2,500	2	2.24%	\$99.09	\$99.09	\$96.99	4.43%	0.36%	2.27%	10.44%	-1.32%	n/a	
GSBG27	Commonwealth of Australia	Treasury Bond 4.75% 21-04-27 Semi	21-May-13	21-Apr-27	4.75%	S/A	Sr Unsecured	Sovereigns	12-Oct-26	21-Oct-26	\$94.16	\$,374,759.82	37,072	93	3.97%	\$101.12	\$107.00	\$100.03	4.51%	0.34%	-2.39%	-2.43%	-17.78%	-20.00%	
GSBU27	Commonwealth of Australia	Treasury Bond 2.75% 21-11-27 Semi	28-Jan-16	21-Nov-27	2.75%	S/A	Sr Unsecured	Sovereigns	12-Nov-26	23-Nov-26	\$20.09	\$445,310.99	4,550	22	2.22%	\$97.99	\$100.16	\$97.00	4.47%	0.56%	-1.20%	2.29%	-11.39%	-5.09%	
GSBI28	Commonwealth of Australia	Treasury Bond 2.25% 21-05-28 Semi	19-May-16	21-May-28	2.25%	S/A	Sr Unsecured	Sovereigns	12-Nov-26	23-Nov-26	\$15.66	\$647,448.83	6,737	16	4.13%	\$96.49	\$98.62	\$95.19	4.42%	0.50%	-1.26%	3.15%	-10.56%	n/a	
GSBU28	Commonwealth of Australia	Treasury Bond 2.75% 21-11-28 Semi	02-Mar-17	21-Nov-28	2.75%	S/A	Sr Unsecured	Sovereigns	12-Nov-26	23-Nov-26	\$10.13	\$204,123.67	2,119	20	2.01%	\$96.83	\$98.72	\$95.15	4.38%	1.05%	-1.66%	2.20%	-13.71%	n/a	
GSBG29	Commonwealth of Australia	Treasury Bond 3.25% 21-04-29 Semi	21-May-13	21-Apr-29	3.25%	S/A	Sr Unsecured	Sovereigns	12-Oct-26	21-Oct-26	\$49.90	\$1,272,790.66	13,067	67	2.55%	\$97.61	\$100.99	\$95.80	4.36%	0.63%	-2.58%	-0.01%	-15.96%	-13.14%	
GSBU29	Commonwealth of Australia	Treasury Bond 2.75% 21-11-29 Semi	29-Jan-18	21-Nov-29	2.75%	S/A	Sr Unsecured	Sovereigns	12-Nov-26	23-Nov-26	\$8.09	\$21,023.54	221	9	0.26%	\$95.15	\$98.74	\$92.00	4.36%	0.57%	-2.46%	-1.17%	-14.81%	n/a	
GSBI30	Commonwealth of Australia	Treasury Bond 2.50% 21-05-30 Semi	14-Jun-18	21-May-30	2.50%	S/A	Sr Unsecured	Sovereigns	12-Nov-26	23-Nov-26	\$1.43	\$57,997.82	618	2	4.07%	\$93.84	\$97.10	\$92.01	4.36%	0.98%	-2.61%	0.79%	-14.65%	n/a	
GSBW30	Commonwealth of Australia	Treasury Bond 1.00% 21-12-30 Semi	21-May-20	21-Dec-30	1.00%	S/A	Sr Unsecured	Sovereigns	10-Dec-26	21-Dec-26	\$9.95	\$55,344.24	643	7	0.56%	\$86.56	\$88.74	\$84.17	4.38%	0.94%	-1.22%	6.90%	-10.46%	n/a	
GSBK31	Commonwealth of Australia	Treasury Bond 1.50% 21-06-31 Semi	03-Jun-19	21-Jun-31	1.50%	S/A	Sr Unsecured	Sovereigns	10-Dec-26	21-Dec-26	\$5.49	\$4,444.65	51	1	0.08%	\$87.15	\$89.07	\$85.25	4.40%	0.28%	-1.53%	0.13%	-12.79%	n/a	
GSBU31	Commonwealth of Australia	Treasury Bond 1.00% 21-11-31 Semi	02-Sep-20	21-Nov-31	1.00%	S/A	Unsecured	Sovereigns	12-Nov-26	23-Nov-26	\$8.82	\$24,271.46	290	6	0.28%	\$84.00	\$86.15	\$81.21	4.42%	1.84%	-1.12%	5.34%	-10.54%	n/a	
GSBI32	Commonwealth of Australia	Treasury Bond 1.25% 21-05-32 Semi	28-Jan-20	21-May-32	1.25%	S/A	Sr Unsecured	Sovereigns	12-Nov-26	23-Nov-26	\$5.60	\$48,406.76	582	4	0.86%	\$83.32	\$86.24	\$81.17	4.46%	2.32%	-1.86%	4.15%	-12.53%	n/a	
GSBU32	Commonwealth of Australia	Treasury Bond 1.75% 21-11-32 Semi	21-Apr-21	21-Nov-32	1.75%	S/A	Sr Unsecured	Sovereigns	12-Nov-26	23-Nov-26	\$90.96	\$11,736,834.24	139,419	210	12.90%	\$85.01	\$88.21	\$80.50	4.51%	1.05%	-2.28%	-3.61%	n/a	n/a	
GSBG33	Commonwealth of Australia	Treasury Bond 4.50% 21-04-33 Semi	22-Nov-13	21-Apr-33	4.50%	S/A	Sr Unsecured	Sovereigns	12-Oct-26	21-Oct-26	\$186.41	\$11,425,242.02	114,591	184	6.13%	\$100.76	\$109.00	\$97.70	4.53%	1.05%	-3.83%	-4.49%	-24.12%	-20.16%	
GSBU33	Commonwealth of Australia	Treasury Bond 3.00% 21-11-33 Semi	19-Apr-22	21-Nov-33	3.00%	S/A	Sr Unsecured	Sovereigns	12-Nov-26	23-Nov-26	\$119.22	\$2,676,610.08	29,737	283	2.25%	\$90.43	\$95.34	\$87.71	4.58%	1.13%	-3.04%	-2.50%	n/a	n/a	
GSBI34	Commonwealth of Australia	Treasury Bond 3.75% 21-05-34 Semi	17-Nov-22	21-May-34	3.75%	S/A	Sr Unsecured	Sovereigns	12-Nov-26	23-Nov-26	\$116.49	\$2,675,396.61	28,437	268	2.30%	\$94.71	\$100.13	\$91.50	4.62%	1.12%	-4.03%	-3.18%	n/a	n/a	
GSBW34	Commonwealth of Australia	Treasury Bond 3.50% 21-12-34 Semi	28-Apr-23	21-Dec-34	3.50%	S/A	Sr Unsecured	Sovereigns	10-Dec-26	21-Dec-26	\$3.26	\$2,860,777	42	1	0.12%	\$91.92	\$97.13	\$90.32	4.66%	-0.32%	-3.77%	-4.81%	n/a	n/a	
GSBK35	Commonwealth of Australia	Treasury Bond 2.75% 21-06-35 Semi	30-Mar-15	21-Jun-35	2.75%	S/A	Sr Unsecured	Sovereigns	10-Dec-26	21-Dec-26	\$127.43	\$2,755,129.57	32,195	277	2.16%	\$85.81	\$90.51	\$83.11	4.69%	-0.48%	-3.28%	-3.92%	-23.38%	-17.07%	
GSBW35	Commonwealth of Australia	Treasury Bond 4.25% 21-12-35 Semi	02-Aug-24	21-Dec-35	4.25%	S/A	Sr Unsecured	Sovereigns	10-Dec-26	21-Dec-26	\$14.50	\$405,401.56	4,199	33	2.79%	\$96.83	\$102.88	\$94.74	4.71%	-0.51%	-3.76%	n/a	n/a	n/a	
GSBE36	Commonwealth of Australia	Treasury Bond 4.25% 21-03-36 Semi	13-Feb-25	21-Mar-36	4.25%	S/A	Sr Unsecured	Sovereigns	10-Sep-26	21-Sep-26	\$136.17	\$5,142,540.29	53,271	316	3.78%	\$97.61	\$102.00	\$93.20	4.72%	1.41%	-4.58%	n/a	n/a	n/a	
GSBS36	Commonwealth of Australia	Treasury Bond 4.25% 21-10-36 Semi	01-Aug-25	21-Oct-36	4.25%	S/A	Sr Unsecured	Sovereigns	12-Oct-26	21-Oct-26	\$1.24	\$3,732.88	39	3	0.30%	\$95.08	\$101.72	\$93.54	4.75%	-0.65%	n/a	n/a	n/a	n/a	
GSBS37	Commonwealth of Australia	Treasury Bond 4.75% 21-10-37 Semi	02-Feb-26	21-Oct-37	4.75%	S/A	Sr Unsecured	Sovereigns	12-Oct-26	21-Oct-26	\$35.21	\$13,857,200.80	137,401	338	38.79%	\$100.59	\$102.06	\$96.57	4.75%	1.43%	n/a	n/a	n/a	n/a	
GSBG37	Commonwealth of Australia	Treasury Bond 3.75% 21-04-37 Semi	21-Oct-14	21-Apr-37	3.75%	S/A	Sr Unsecured	Sovereigns	12-Oct-26	21-Oct-26	\$56.89	\$1,540,309.74	16,789	42	2.71%	\$92.50	\$97.30	\$89.00	4.78%	1.55%	-4.26%	-5.19%	-26.95%	-21.34%	
GSBK39	Commonwealth of Australia	Treasury Bond 3.25% 21-06-39 Semi	20-Oct-15	21-Jun-39	3.25%	S/A	Sr Unsecured	Sovereigns	10-Dec-26	21-Dec-26	\$7.90	\$86,416.12	1,024	19	1.09%	\$84.98	\$90.74	\$82.13	4.89%	-0.84%	-4.40%	-6.11%	-27.45%	-23.14%	
GSBI41	Commonwealth of Australia	Treasury Bond 2.75% 21-05-41 Semi	30-Jul-18	21-May-41	2.75%	S/A	Sr Unsecured	Sovereigns	12-Nov-26	23-Nov-26	\$9.32	\$314,887.78	4,141	12	3.38%	\$76.40	\$81.88	\$73.62	4.97%	1.83%	-4.70%	-6.61%	-30.90%	n/a	
GSBE47	Commonwealth of Australia	Treasury Bond 2.00% 21-03-47 Semi	19-Oct-16	21-Mar-47	3.00%	S/A	Sr Unsecured	Sovereigns	10-Sep-26	21-Sep-26	\$38.41	\$510,918.55	7,024	32	1.33%	\$73.26	\$78.16	\$69.50	5.17%	1.75%	-5.19%	-10.52%	-36.15%	n/a	
GSBK51	Commonwealth of Australia	Treasury Bond 1.75% 21-06-51 Semi	05-Aug-20	21-Jun-51	1.75%	S/A	Unsecured	Sovereigns	10-Dec-26	21-Dec-26	\$36.21	\$1,303,149.06	25,449	30	3.60%	\$51.41	\$56.00	\$48.13	5.27%	1.26%	-6.54%	-12.58%	-41.92%	n/a	
GSBK54	Commonwealth of Australia	Treasury Bond 4.75% 21-06-54 Semi	26-Oct-23	21-Jun-54	4.75%	S/A	Sr Unsecured	Sovereigns	10-Dec-26	21-Dec-26	\$327.34	\$17,426,670.27	188,663	356	5.32%	\$52.60	\$101.58	\$90.62	5.26%	-1.91%	-6.65%	n/a	n/a	n/a	
Government bonds - Inflation linked																									
GSIU27	Commonwealth of Australia	Treas Indexed Bond Cpi+0.75% 21-11-27 Qly	01-Sep-17	21-Nov-27	0.75%	Qtrly	Sr Unsecured	Sovereigns	12-Aug-26	21-Aug-26	\$68.49	\$1,329,904.35	10,202	60	1.94%	\$130.46	\$130.57	\$125.80	1.35%	0.15%	3.33%	11.93%	10.37%	n/a	
GSIO30	Commonwealth of Australia	Treas Indexed Bond Cpi+2.50% 20-09-30 Qly	21-May-13	20-Sep-30	2.50%	Qtrly	Sr Unsecured	Sovereigns	10-Sep-26	21-Sep-26	\$43.14	\$5,372,754.40	34,336	73	12.45%	\$156.42	\$158.67	\$153.44	1.88%	-0.56%	0.62%	5.06%	-2.59%	8.68%	
GSIU32	Commonwealth of Australia	Treas Indexed Bond Cpi+0.25% 21-11-32 Qly	01-Sep-21	21-Nov-32	0.25%	Qtrly	Sr Unsecured	Sovereigns	12-Aug-26	21-Aug-26	\$10.96	\$80,377.96	734	5	0.73%	\$109.60	\$109.86	\$104.00	2.15%	0.92%	3.30%	9.94%	n/a	n/a	
GSIO35	Commonwealth of Australia	Treas Indexed Bond Cpi+2.00% 21-08-35 Qly	01-Oct-13	21-Aug-35	2.00%	Qtrly	Sr Unsecured	Sovereigns	12-Aug-26	21-Aug-26	\$38.41	\$2,084,388.54	15,177	26	5.43%	\$137.77	\$141.86	\$125.78	2.41%	1.08%	0.35%	2.63%	-9.47%	5.97%	
GSIO40	Commonwealth of Australia	Treas Indexed Bond Cpi+1.25% 21-08-40 Qly	18-Aug-15	21-Aug-40	1.25%	Qtrly	Sr Unsecured	Sovereigns	12-Aug-26	21-Aug-26	\$15.15	\$167,620.26	1,482	10	1.11%	\$112.33	\$119.40	\$103.17	2.74%	-0.47%	-1.00%	-3.07%	-15.81%	-0.83%	
GSIO50	Commonwealth of Australia	Treas Indexed Bond Cpi+1.00% 21-02-50 Qly	26-Sep-18	21-Feb-50	1.00%	Qtrly	Sr Unsecured	Sovereigns	12-Aug-26	21-Aug-26	\$19.31	\$1,350,316.47	16,030	33	6.99%	\$84.24	\$92.20	\$76.51	3.06%	0.88%	-4.40%	-14.04%	-32.47%	n/a	
Corporate bonds																									
AYUHD	Australian Unity Limited	Simple Bond 3-Bbsw+2.15% 15-12-26	18-Oct-19	15-Dec-26	6.49%	Qtrly	Sr Unsecured	Managed Care	03-Jul-26	14-Jul-26	\$207.00	\$2,486,157.47	25,087	151	1.20%	\$100.00	\$101.45	\$97.05	9.44%	0.72%	-0.62%	0.00%	0.81%	n/a	
AYUHE	Australian Unity Limited	Simple Bond 3-Bbsw+2.50% 15-12-28	01-Dec-23	15-Dec-28	6.84%	Qtrly	Sr Unsecured	Managed Care	03-Jul-26	14-Jul-26	\$255.17	\$25,636,283.49	261,525	244	10.05%	\$99.75	\$102.40	\$96.50	8.63%	2.47%	-2.11%	n/a	n/a	n/a	
CVCHB	CVC Limited	Bond 3-Bbsw+4.50% 11-12-28 Qly Cum Red	11-Dec-25	11-Dec-28	8.79%	Qtrly	Sr Unsecured	Financial Services	10-Sep-26	21-Sep-26	\$74.83	\$459,874.23	4,584	33	0.61%	\$99.77	\$102.00	\$98.00	9.39%	-1.24%	-3.60%	n/a	n/a	n/a	
SNCHA	Sandon Capital Investments Limb	Bond 8.50% 10-07-30 Mth Sub Red	11-Aug-23	10-Jul-30	4.80%	S/A	Subordinated	Financial Services			\$35.73	\$656,966.03	6,557	48	1.84%	\$99.70	\$102.08	\$97.30	7.45%	-2.25%	2.10%	n/a	n/a	n/a	
Structured Income Notes																									
CIHMA	Challenger IM Capital Limited	Bond 1-Bbsw+2.75% 06-09-32 Mth Cum Red	10-Sep-25	06-Sep-32	7.05%	Monthly	Unsecured	Financial Services			\$343.63	\$9,968,106.49	101,092	930	2.90%	\$98.18	\$100.95	\$93.52	7.50%	-0.32%	n/a	n/a	n/a	n/a	
DMNHA	Dominion Investment Group Limb	Bond 1-Bbsw+3.00% 11-10-32 Mth Cum Red	17-Oct-25	11-Oct-32	7.30%	Monthly	Sr Unsecured	Financial Services			\$408.00	\$6,805,309.67	91,664	440	2.16%	\$96.00	\$99.00	\$93.00	8.15%	-1.03%	n/a	n/a	n/a	n/a	
MAMHA	Ma Credit Portfolio Holdings Limb	Bond 1-Bbsw+3.25% 10-12-32 Mth Secur Red	18-Dec-25	10-Dec-32	7.55%	Monthly	Secured	Financial Services			\$216.66	\$8,944,526.84	94,818	423	4.13%	\$94.20	\$100.58	\$90.00	8.61%	-1.88%	n/a	n/a	n/a	n/a	
RAMHA	RAM Income Capital Ltd	Bond 1-Bbsw+3.00% 10-04-32 Mth Secur Cum	15-Oct-25	10-Apr-32	7.30%	Monthly	Secured	Financial Services			\$300.00	\$11,128,595.47	111,370	303	3.71%	\$100.00	\$101.20	\$97.80</							