

# ASX Investor Presentation

Presented by Bernard Machen

May 2026

# Disclaimer

This communication has been prepared by Investment Manager, Solaris Investment Management Limited ('Solaris') ACN 128 512 621 AFSL 330505.

Pinnacle Fund Services Limited ACN 082 494 362 AFSL 238371 is the issuer of units in the Solaris Core Australian Equity Fund ARSN 128 859 898, Solaris Australian Equity Long Short Fund ARSN 618 962 995, Solaris Australian Equity Income Fund ARSN 618 961 667 and Solaris Australian Equity Fund (Total Return) ARSN 167 220 546 (the 'Funds'). PFSL is not licensed to provide financial product advice. The Product Disclosure Statement ('PDS') and Target Market Determination ('TMD') of the Funds is available at <https://solariswealth.com.au/adviser/funds/>. Any potential investor should consider the relevant PDS and TMD before deciding whether to acquire, or continue to hold units in, the Fund. This presentation is supplied on the following conditions which are expressly accepted and agreed to by each interested party ('Recipient').

Solaris the manager for Solaris Australian Equity Income Plus Ltd ('SET' or 'Company'), the issuer of the Shares. While SET believe the information contained in this communication is based on reliable information, no warranty is given as to its accuracy and persons relying on this information do so at their own risk. Subject to any liability which cannot be excluded under the relevant laws, SET disclaim all liability to any person relying on the information contained in this communication in respect of any loss or damage (including consequential loss or damage), however caused, which may be suffered or arise directly or indirectly in respect of such information. Prospective investors should read Prospectus & Full T&C's at [www.solariswealth.com.au/SET](http://www.solariswealth.com.au/SET).

The information in this presentation is not financial product advice and has been prepared without taking into account the objectives, financial situation or needs of any particular person.

The information is not intended for any general distribution or publication and must be retained in a confidential manner. Information contained herein consists of confidential proprietary information constituting the sole property of Solaris and respecting Solaris and its investment activities; its use is restricted accordingly. All such information should be maintained in a strictly confidential manner.

This presentation does not purport to contain all of the information that may be required to evaluate Solaris or the Funds and the Recipient should conduct their own independent review, investigations and analysis of Solaris and the Funds and of the information contained or referred to in this presentation. This presentation contains forward-looking statements. Although forward-looking statements contained in this presentation are based upon what Solaris believes are reasonable assumptions, there can be no assurance that forward-looking statements will prove to be accurate, as actual results and future events could differ materially from those anticipated in such statements.

Neither Solaris, Pinnacle Fund Services Limited or their representatives and respective employees or officers (collectively, the Beneficiaries) make any representation or warranty, express or implied, as to the accuracy, reliability or completeness of the information contained in this presentation or subsequently provided to the Recipient or its advisers by any of the Beneficiaries, including, without limitation, any historical financial information, the estimates and projections and any other financial information derived there from, and nothing contained in this presentation is, or shall be relied upon, as a promise or representation, whether as to the past or the future. Past performance is not a reliable indicator of future performance. The information in this presentation has not been the subject of complete due diligence nor has all such information been the subject of proper verification by the Beneficiaries.

Except insofar as liability under any law cannot be excluded, the Beneficiaries shall have no responsibility arising in respect of the information contained in this presentation or subsequently provided by them or in any other way for errors or omissions (including responsibility to any person by reason of negligence).

Investors should seek their own independent financial advice before making any investment decision and should consider the appropriateness of any advice. Investors should obtain a copy of and consider any relevant PDS or offer document before making any investment decisions.

This may contain the trade names or trademarks of various third parties, and if so, any such use is solely for illustrative purposes only. All product and company names are trademarks™ or registered® trademarks of their respective holders. Use of them does not imply any affiliation with, endorsement by, or association of any kind between them and Solaris'

# Solaris Overview



SOLARIS

## Solaris

A Style Agnostic, active Australian Equity manager.

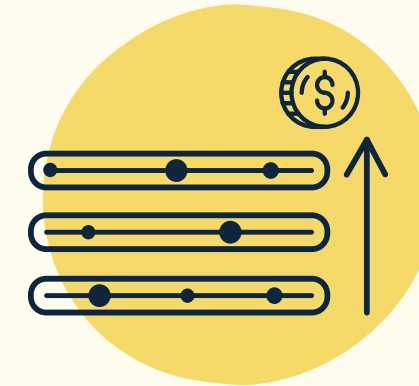
Manage over \$8bn in FUM\* with consistent investment process for over 20 years.



## Investment Approach

Invest in companies using fundamental analysis to exploit market inefficiencies in forecasts and valuations.

Empower analysts by combining their analytical role with that of a portfolio manager.



## Investment Strategies

Australian Equities Focused

The Solaris Core Strategy is our flagship strategy with other strategies, being an extension of this approach:-

- Solaris Core
- Solaris Long Short
- Solaris Income

# Key idea: Qube Logistics



ASX: QUB

## Qube Logistics

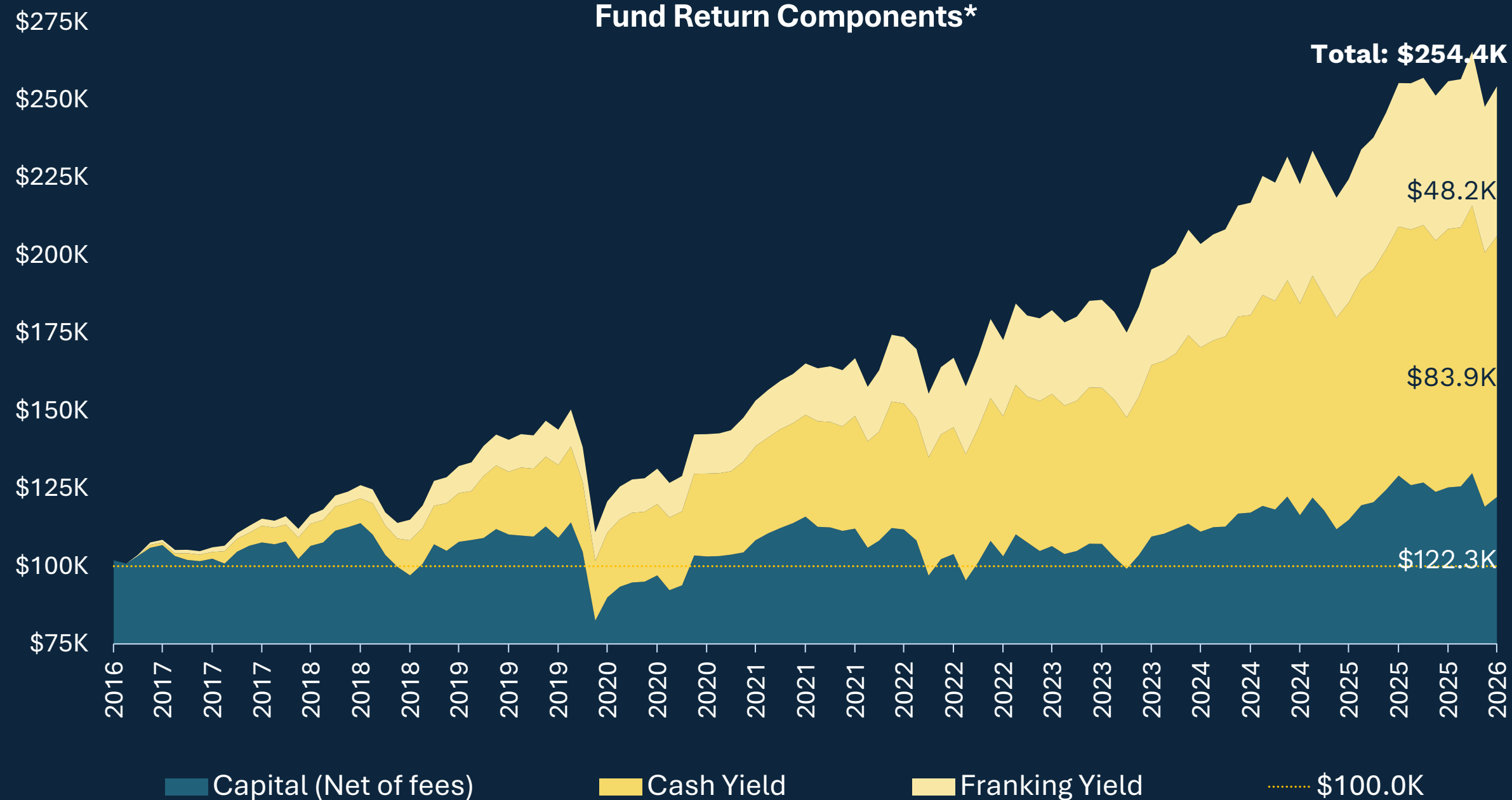
- ✓ Irreplaceable network of logistics assets
- ✓ Currently under agreed **'takeover'** from Macquarie Asset Management
- ✓ When approved a **material 'fully franked' special dividend to follow** in July

# Key idea: Goodman Group



# Solaris Income Investing

Solaris Australian Equities Income Fund (APIR: WHT2589AU)  
Fund Return Components\*



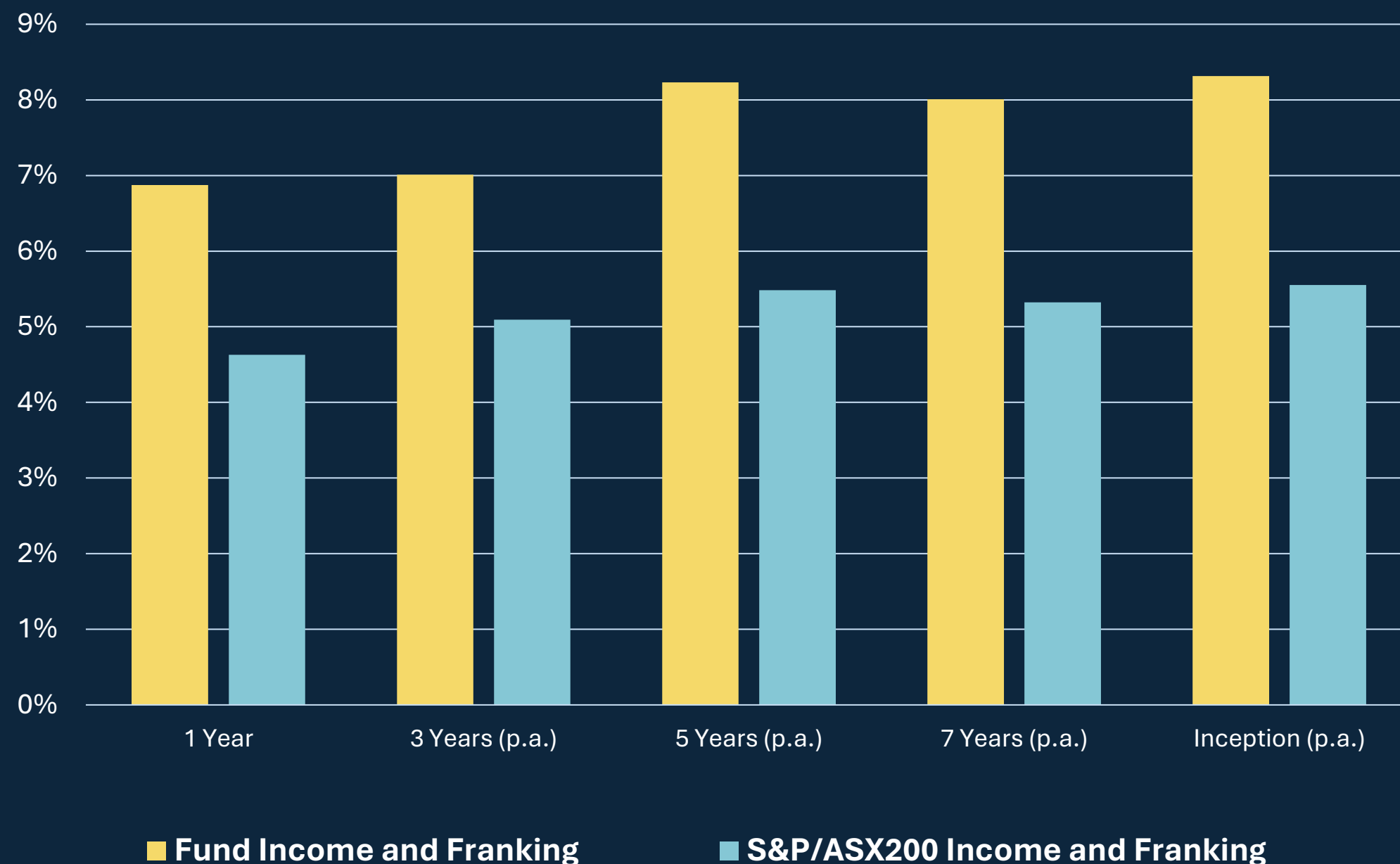
## SOLARIS

Australian Equity Income Plus Limited

- Our approach has delivered income and capital growth.
- Companies like Goodman help **grow capital**

# Solaris Income Investing

Fund vs Benchmark: 30 Apr 2026



## SOLARIS

Australian Equity Income Plus Limited

- Our approach has delivered income and capital growth.
- Companies like Goodman help grow capital
- QUB demonstrates our active approach to finding both ordinary and special dividends to deliver **above market cash and franking.**
- We seek to avoid “Dividend Traps” which are companies where the yield does not compensate for the share price decline.
- Demand was high for a Listed Version of our Income Fund:-
- **SET.ASX launched and opened trading 17-Apr-2026 adopts the same investment strategy**

**Source:** Solaris, broker consensus historic and forecast data. \*As at 30 April 2026.

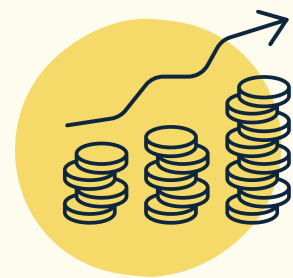
This is historical performance data. It should be noted investment values can rise and fall and past performance is not indicative of future performance. Figures may not add up due to rounding.

There are differences between the Unlisted Fund and SET including fees, costs and tax treatment. For full details, please refer to Solaris Australian Equity Income Plus Limited

Disclaimer: Companies mentioned are for illustrative purposes only and are not a recommendation to buy or sell any particular security.

# Solaris Income Plus ASX: SET

A new listed investment company available on the ASX under ASX: SET



## Objectives

- Income above Benchmark
- Total Return above Benchmark
- Monthly Income



## Strong Track Record

- 9+ year track record
- Unlisted Fund<sup>&</sup> has delivered on objectives since inception<sup>\*</sup>
- ASX:SET managed by the same experienced team



## Fundamental Research

- Best of Value & Growth
- Fundamental research delivers an edge in identifying tactical dividend opportunities
- Sector specialist as portfolio managers

*Source: Solaris, broker consensus historic and forecast data.*

*Disclaimer: Companies mentioned are for illustrative purposes only and are not a recommendation to buy or sell any particular security.*

*<sup>&</sup> There are differences between the Unlisted Fund and SET. Please refer to slide 28 for an explanation of these differences.*

*<sup>\*</sup> As at 30 April 2026. This is historical performance data. It should be noted investment values can rise and fall and past performance is not indicative of future performance.*

# Solaris Income Plus ASX: SET

A new listed investment company available on the ASX under ASX: SET

**QUB – Qube Logistics we like for INCOME**

**GMG – Goodman Group we like for GROWTH**

**If you are interested in:-**

- Regular Monthly Franked Income
- Accessing a portfolio Solaris' best investments for **Income** and **Growth**

**Ask your advisor to consider whether you should get SET**

# Thank You

# SOLARIS

investment management

[www.solariswealth.com.au](http://www.solariswealth.com.au)

© Solaris Investment Management  
ACN 128 512 621 | AFSL 330505