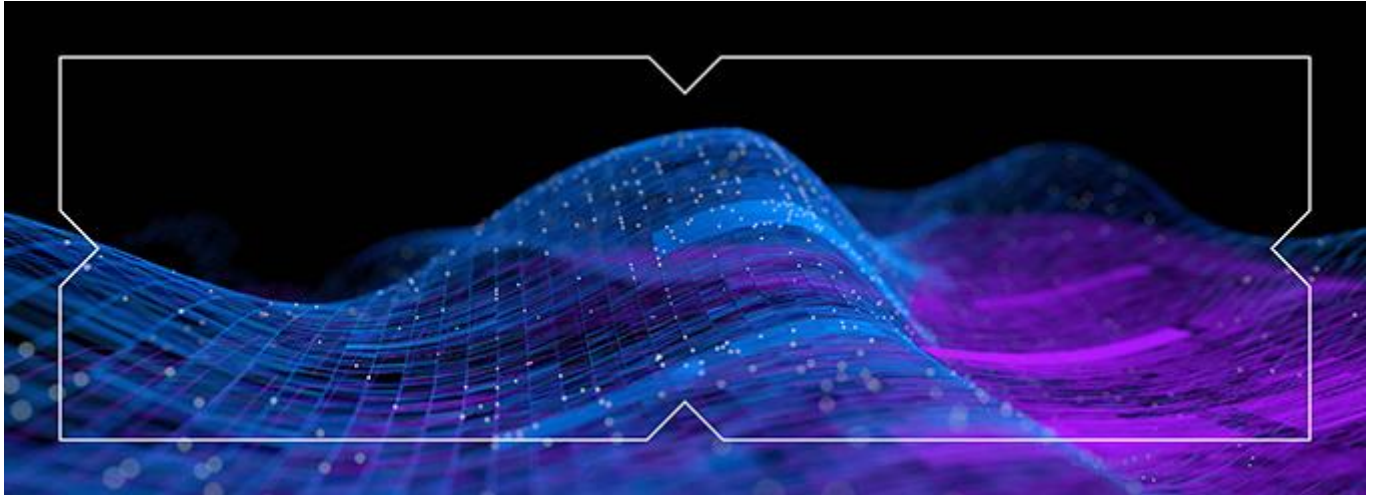


To view this email as a web page, click [here](#).



Changes to CHESX XP1 Test Environment for CHESX Project

Access to the CHESX XP1 Test Environment will change to accommodate CHESX Release 1 Clearing Regression Testing.

The XP1 Test Environment (Port 4207) currently supports testing by all CHESX Users, however this environment will be repurposed to specifically support CHESX Release 1 Clearing Participant testing activities in the Clearing Regression Phase. A small number of users are currently intermittently connected to and using this environment.

From **7:00pm AEST Friday 4 July 2025**, the CHESX XP1 Test Environment will be brought down for CHESX Release 1 integration development and will be unavailable for all CHESX User testing.

XP1 users are requested to migrate their environments to alternative CHESX test environments XP2 (Port 4210) and/or RTE (Port 4206), using existing XP2/RTE AIC access to the respective CHESX test environments.

Customers requiring new access to XP2 or RTE should contact CHESXhelp@asx.com.au to obtain a Test Kit application form.

Configuration details for the XP2 or RTE CHESX Test Environments are outlined in the [CHESX External Testing Guidelines](#).

Clearing and Settlement Participants involved in the CHESX Release 1 Clearing Regression Phase will be provided with the relevant details relating to connecting to the XP1 Test Environment in the CHESX Release 1 Clearing Regression Test Guide, planned for publication in June 2025.

If customers have any questions, they can contact the CHES Project by emailing CHESreplacement@asx.com.au.

What do I need to do by when?

By Friday 4 July 2025, existing customers connected to and interacting with XP1 should have repointed their applications to an alternate CHES Test Environment.

Kind regards,
The CHES Project Team



20 Bridge Street, Sydney, NSW, 2000, Australia

This email was sent to you from ASX Operations Pty Ltd

[Preference Centre](#) | [Privacy Policy](#)

Copyright © 2025 ASX Operations Pty Ltd, All Rights Reserved.