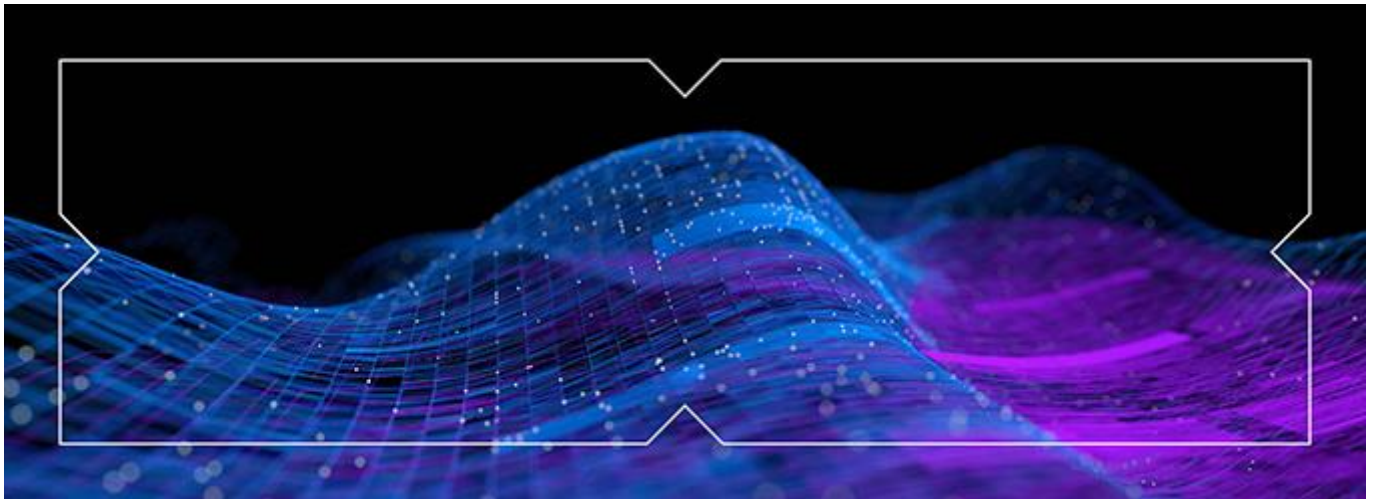


To view this email as a web page, click [here](#).



## Release 1 Industry Test Environment (ITE)

Today marks the opening of the Release 1 Industry Test Environment (ITE) and the commencement of the AMO Build and Test phase, a significant milestone in the delivery of the CHES project.

This is the first opportunity for Approved Market Operators and their Software Providers to connect to an ASX test environment and access CHES's new clearing service.

Information relating to ITE including environment status, the latest release notes, known issues and specification documents are available via the [Release 1 ITE hub](#) on the ASX website.

Credentials required for your organisation to log into the ITE FIX gateway will be communicated separately with the authorised person(s) nominated in your organisation's ITE application form.

ASX appreciates the contributions and effort to date from you and your organisation in helping shape this phase.

[Visit the hub](#)

Kind regards,  
CHES Project



20 Bridge Street, Sydney, NSW, 2000, Australia

This email was sent to you from ASX Operations Pty Ltd

[Preference Centre](#) | [Privacy Policy](#)

Copyright © 2025 ASX Operations Pty Ltd, All Rights Reserved.