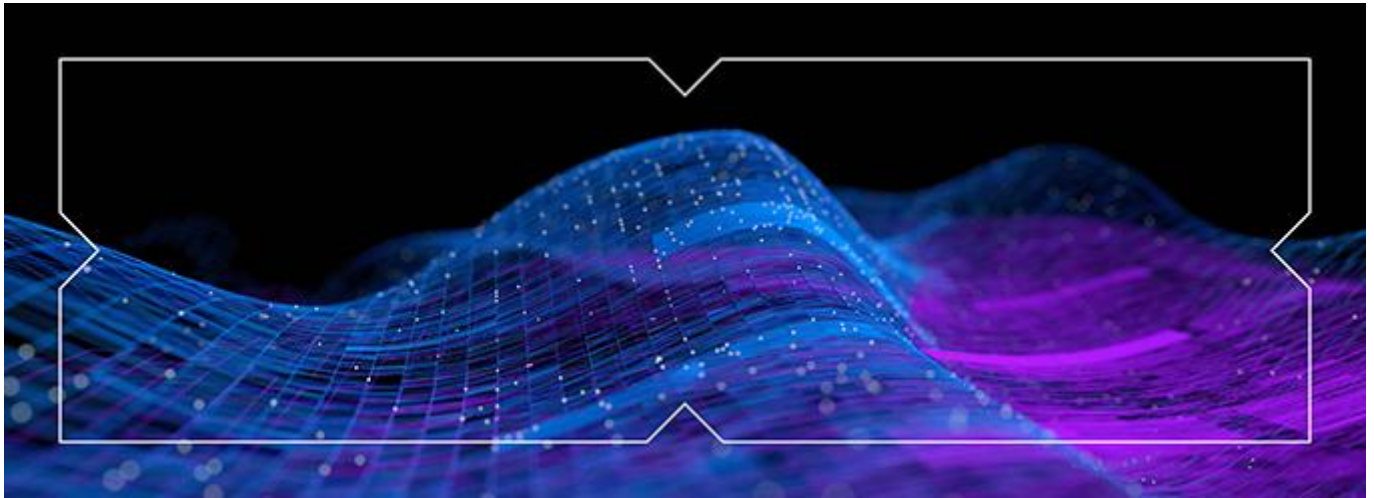


To view this email as a web page, click [here](#).



[CHES Project](#)



CHES Release 2 Industry Test Environment (ITE2) is now available with Drop 2 features

ASX is pleased to announce that the deployment of Drop 2 features into the Release 2 Industry Test Environment (ITE2) is complete. Software Providers can now reconnect to ITE2 and resume their Software Provider Build, Test and Readiness activities.

Drop 2 enables Software Providers to test the full Settlement Instructions lifecycle for both Unilateral and Bilateral Settlement Instructions and includes batch settlement processing.

Deployed features include:

- Bilateral and Unilateral Settlement Instructions - creation, amendment, cancellation, hold and release, linking
- batch and non-batch settlement of Bilateral and Unilateral Settlement Instructions
- batch settlement notifications passthrough investor data (TFN/ABN advice).

Deployed tooling to support Software Provider testing includes:

- auto responder tooling to support Bilateral Settlement Instruction testing
- CHES UI functionality to support creating and maintaining Bilateral and Unilateral Settlement Instructions.

To support Software Providers using the Release 2 Drop 2 features and test tooling, the following suite of documentation is available:

- [CHES Release 2 Drop 2 Release Notes](#)

- [CHESS Release 2 Frequently Asked Questions](#)
- [CHESS Release 2 Known Issues Log](#)
- [CHESS User Interface Guide](#)
- [CHESS Release 2 Guide to Industry Testing](#)

Software Providers can also access the previously published [Drop 2 User Technical Documentation](#), which provides the functional and message specifications for the available functionality and features.

Support during ITE2

Software Providers can contact ASX throughout the **Build and Test phase** for support and enquiries.

- **Technical support queries** (connectivity, onboarding, AMQP, CHES UI, SFTP): [Customer Technical Support](#)
- **Functional support queries** (documentation, ISO, business processes, readiness): [CHESS Project support](#)
- **General enquiries and relationship management:** [CHESS Stakeholder Engagement Support](#)

Support requests can be submitted 24/7 and will be responded between 9.00am – 5.00pm AEST during Australian business days.

Should you have any questions, feedback, or additional considerations, please email the [CHESS Stakeholder Engagement Team](#) or contact your Stakeholder Engagement representative directly.

Kind regards,
The CHES Project Team



39 Martin Place, Sydney, NSW, 2000, Australia

Copyright © 2026 ASX Operations Pty Ltd, All Rights Reserved.