



Hybrids:

Monthly update - July 2025



Month: Jul-25

Trading days: 23

Period ending: Thursday, 31 July 2025

Snapshot by category

Australian segment bond segment	Number listed	Market cap (\$m)	Trades total (#)	Trades per day (#)	Volume (#)	Value (\$m)
Convertible preference shares and capital notes	45	42,882	53,645	2,332	6,110,724	628.3
Convertible bonds	8	336	398	17	1,274,863	3.5
Hybrid securities	0	0	0	0	0	0.0
Total	53	43,218	54,043	2,350	7,385,587	631.8

Recent listings

Entity	ASX code	Size (\$m)	Type	Listing date	Issue price	Maturity / Conv / Reset	Interest rate / Dividend	Distribution frequency	Last price
Macquarie Group Limited	MQGPG	1,500.0	Convertible Preference Shar	17-Sep-2024	\$100.00	15-Dec-2031	6.36%	Qtrly	\$102.95
National Australia Bank Limited	NABPK	1,000.0	Convertible Preference Shar	07-Jun-2024	\$100.00	17-Mar-2032	6.31%	Qtrly	\$103.50
Suncorp Group Limited	SUNPJ	360.0	Convertible Preference Shar	15-May-2024	\$100.00	17-Jun-2030	6.51%	Qtrly	\$103.44
Insurance Australia Group Limited	IAGPF	350.0	Convertible Preference Shar	27-Mar-2024	\$100.00	15-Dec-2030	6.91%	Qtrly	\$104.64
Bendigo and Adelaide Bank Limited	BENPI	300.0	Convertible Preference Shar	26-Mar-2024	\$100.00	13-Dec-2030	6.92%	Qtrly	\$105.18
Australia and New Zealand Banking	AN3PL	1,700.0	Convertible Preference Shar	21-Mar-2024	\$100.00	20-Mar-2031	6.59%	Qtrly	\$104.21
Westpac Banking Corporation	WBCPM	1,750.0	Convertible Preference Shar	19-Dec-2023	\$100.00	22-Sep-2031	6.76%	Qtrly	\$105.75
Judo Capital Holdings Limited	JDOPA	75.0	Convertible Preference Shar	17-Nov-2023	\$100.00	16-Feb-2029	10.30%	Qtrly	\$112.55
National Australia Bank Limited	NABPJ	1,250.0	Convertible Preference Shar	15-Sep-2023	\$100.00	17-Sep-2030	6.51%	Qtrly	\$104.24
Commonwealth Bank of Australia	CBAPM	1,550.0	Convertible Preference Shar	13-Jun-2023	\$100.00	17-Jun-2030	6.71%	Qtrly	\$105.00
Challenger Limited	CGFPD	350.0	Convertible Preference Shar	06-Apr-2023	\$100.00	25-May-2029	7.31%	Qtrly	\$105.38
Australia and New Zealand Banking	AN3PK	1,500.0	Convertible Preference Shar	27-Mar-2023	\$100.00	20-Mar-2030	6.44%	Qtrly	\$102.86
Insurance Australia Group Limited	IAGPE	495.0	Convertible Preference Shar	23-Dec-2022	\$99.00	15-Jun-2029	7.21%	Qtrly	\$104.77

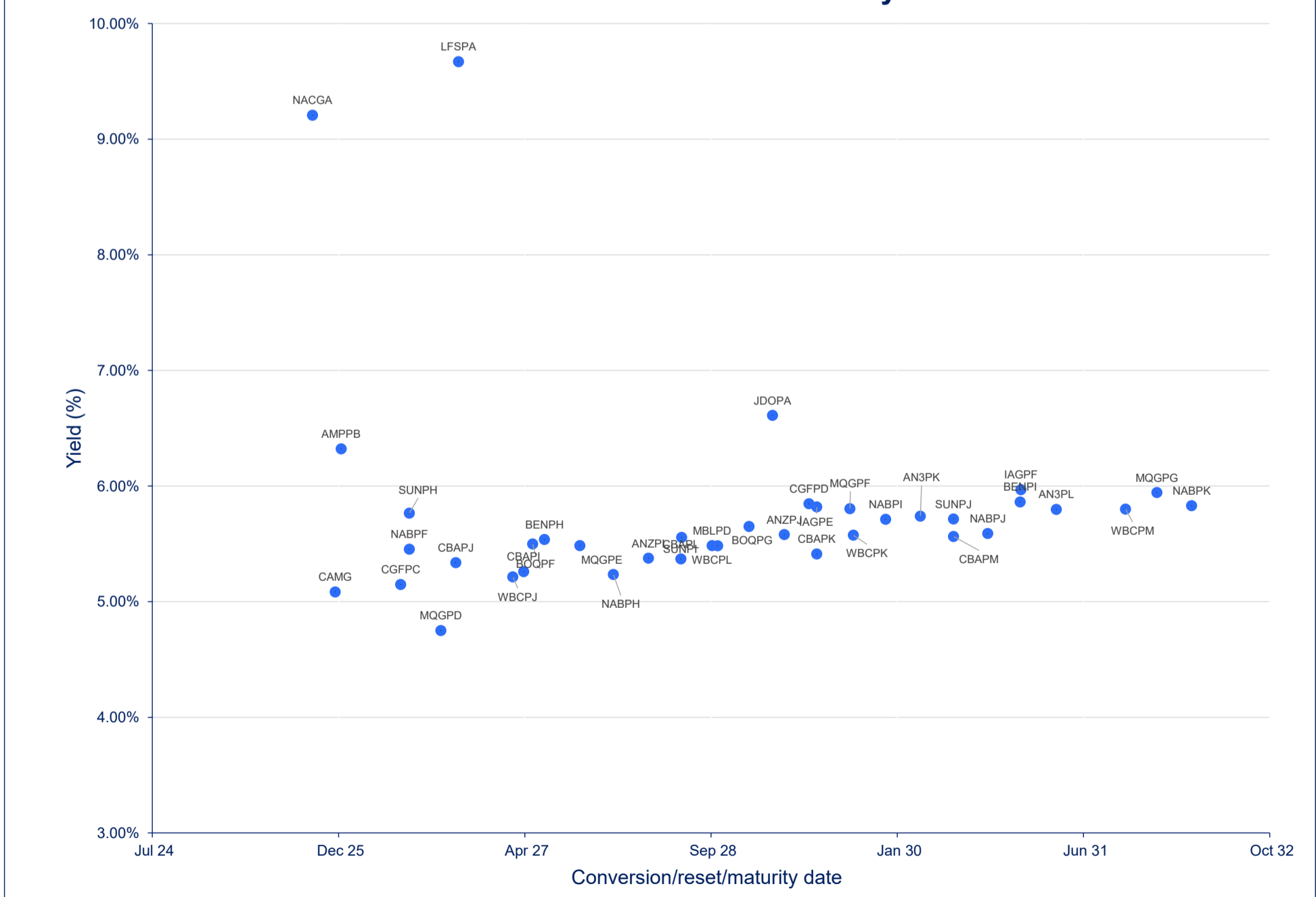
*BBSW = Bank Bill Swap Rate

† As of the date of this report this security has not traded, the Last Price reflects the Issue Price

Most actively traded securities by value

ASX code	Security type	Value (\$)	Value (%)	Volume	Volume (%)
NABPH	Convertible Preference Shares and Capital Notes	33,766,578	5.34%	324,785	4.40%
WBCPH	Convertible Preference Shares and Capital Notes	30,726,540	4.86%	307,082	4.16%
NABPF	Convertible Preference Shares and Capital Notes	28,318,797	4.48%	275,976	3.74%
CBAPL	Convertible Preference Shares and Capital Notes	28,278,570	4.48%	275,562	3.73%
WBCPM	Convertible Preference Shares and Capital Notes	27,644,064	4.38%	262,626	3.56%
Total Top 5		148,734,548.56	23.54%	1,446,031	19.58%

Yield versus conversion/reset/maturity date





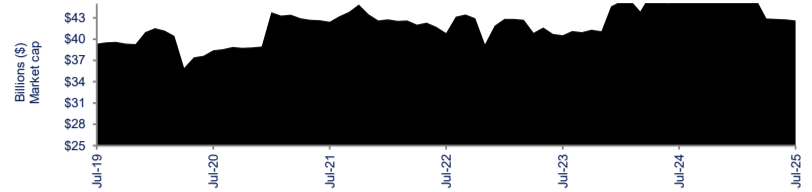
Hybrids:

Monthly update - July 2025

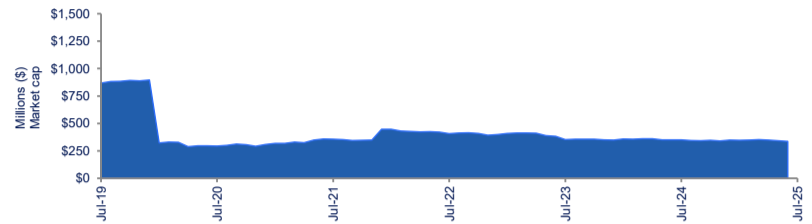


Performance and trading activity breakdown by category

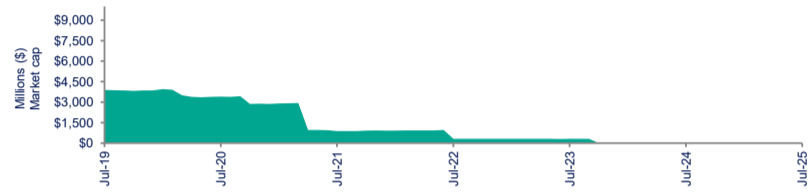
Convertible preference shares and capital notes	Last 12 months			Last month	
	Jul-24	Jul-25	% change	Jun-25	% change
Market cap (\$m)	45,481.0	42,881.8	-5.7%	42,616.9	0.6%
Number listed (actual)	50	45	-10.0%	45	0.0%
Monthly volume	17,848,384	6,110,724	-65.8%	7,129,380	-14.3%
Monthly trades	44,948	53,645	19.3%	51,111	5.0%
Monthly value (\$m)	654.4	628.3	-4.0%	729.4	-13.9%



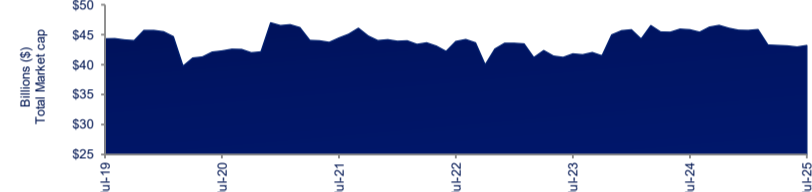
Convertible bonds	Last 12 months			Last month	
	Jul-24	Jul-25	% change	Jun-25	% change
Market cap (\$m)	344.9	335.9	-2.6%	332.8	1.0%
Number listed (actual)	8	8	0.0%	8	0.0%
Monthly volume	315,303	1,274,863	304.3%	983,657	29.6%
Monthly trades	343	398	16.0%	424	-6.1%
Month value (\$m)	3.7	3.5	-6.8%	5.1	-31.3%



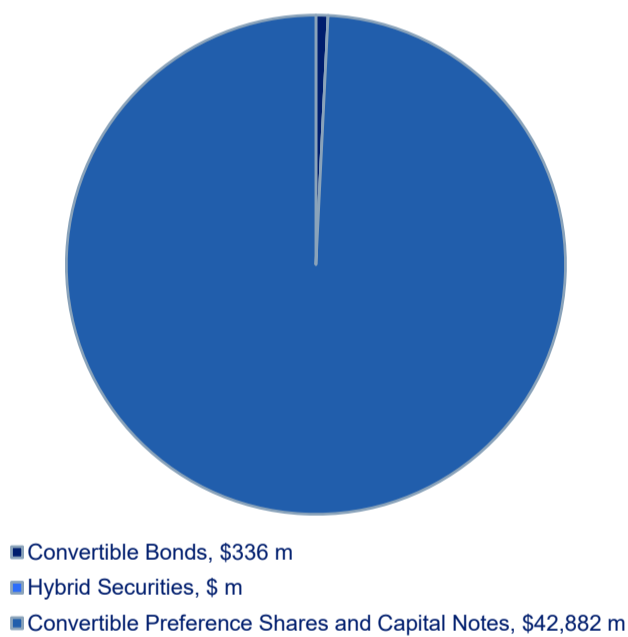
Hybrid securities	Last 12 months			Last month	
	Jul-24	Jul-25	% change	Jun-25	% change
Market cap (\$m)	-	-	n/a	-	n/a
Number listed (actual)	-	-	n/a	-	n/a
Monthly volume	-	-	n/a	-	n/a
Monthly trades	-	-	n/a	-	n/a
Monthly value (\$m)	-	-	n/a	-	n/a



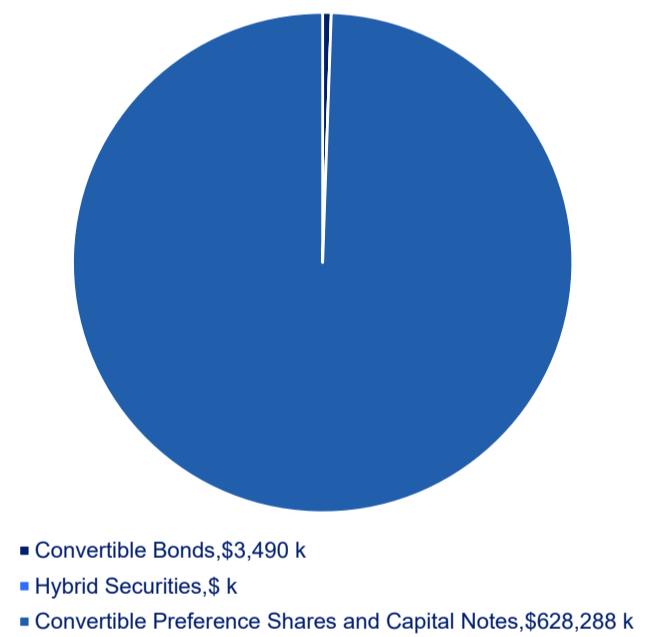
Total hybrid market	Last 12 months			Last month	
	Jul-24	Jul-25	% change	Jun-25	% change
Market cap (\$m)	45,825.9	43,217.7	-5.7%	42,949.6	0.6%
Number listed (actual)	58	53	-8.6%	53	0.0%
Monthly volume	18,163,687	7,385,587	-59.3%	8,113,037	-9.0%
Monthly trades	45,291	54,043	19.3%	51,535	4.9%
Monthly value (\$m)	658.1	631.8	-4.0%	734.5	-14.0%



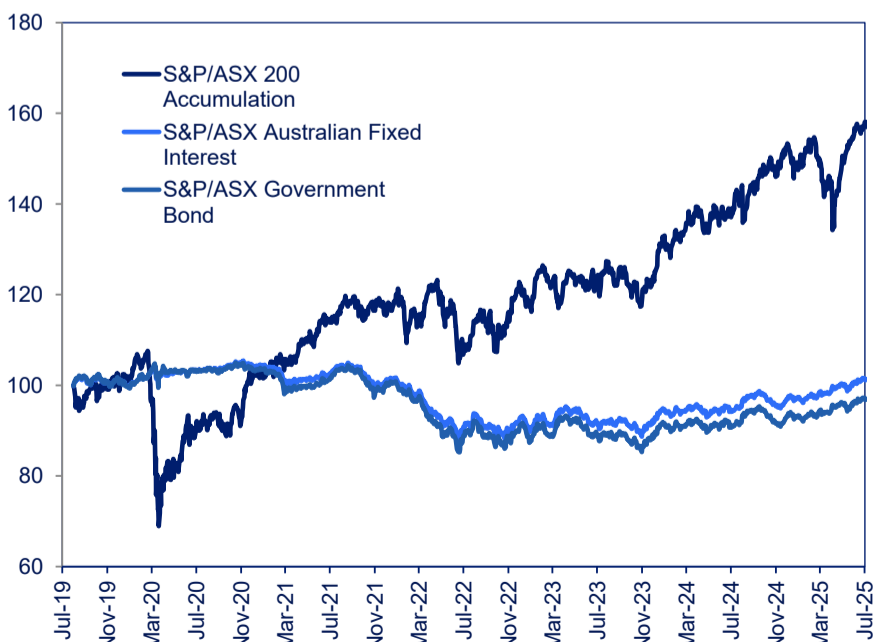
Hybrids mkt cap breakdown by type



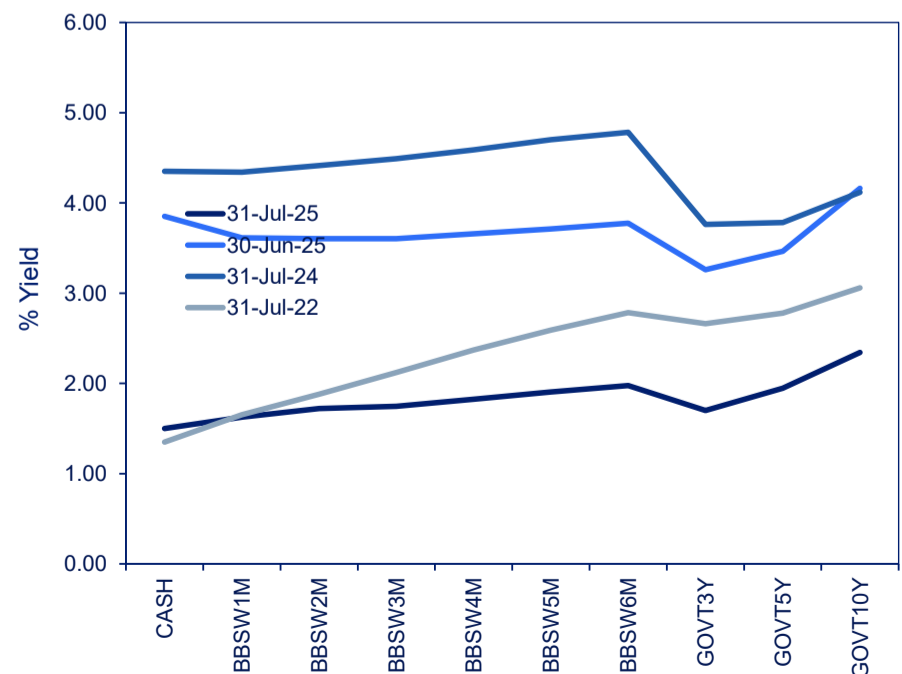
Hybrids breakdown by traded value



S&P indices - Rebased to 100



Australian yield curve





Spotlight on hybrids:

Monthly update - July 2025



ASX profiles

ASX code	Issuer	Description
Convertible bonds		
CAMG	Clime Capital Limited	Convert Bond 5.25% 30-11-25 Qly Red
ECPGA	ECP Emerging Growth Limited	Convert Bond 6.50% 11-04-27 Qly Sub Red T-4-24
FSIGA	Flagship Investments Limited	Convert Bond 6.50% 01-10-26 Qly Red
GFLGA	Global Masters Fund Limited	Convert Bond 5.5% 24-11-26 Qly Red Step T-11-24
MOZG	Mosaic Brands Limited	Convert Bond 8.0% 30-09-24 Qly Sub Sec T-09-22
NACGA	Naos Ex-50 Opportunities Company Limited	Convert Bond 5.50% 30-09-27 Semi Step T-09-25
NCCGA	Naos Emerging Opportunities Company Limited	Convert Bond 4.50% 30-09-28 Semi Non-Cum Red Step
NFNG	Nufarm Finance (NZ) Limited	Convert Bond 6-Bbsw+3.90% Perp Sub Non-Cum Exh Stp
Hybrid securities		

Converting preference shares and capital notes

AMPPB	AMP Limited	Cap Note 3-Bbsw+4.50% Perp Non-Cum Red T-12-25
ANZPI	Australia and New Zealand Banking Group Limited	Cap Note 3-Bbsw+3.00 Perp Non-Cum Red T-03-28
AN3PJ	Australia and New Zealand Banking Group Limited	Cap Note 3-Bbsw+2.70% Perp Non-Cum Red T-03-29
AN3PK	Australia and New Zealand Banking Group Limited	Cap Note 3-Bbsw+2.75% Perp Non-Cum Red T-03-30
AN3PL	Australia and New Zealand Banking Group Limited	Cap Note 3-Bbsw+2.90% Perp Non-Cum Red T-03-31
AYUPA	Australian Unity Limited	Mci Cap Note 5.00% Perp Semi Non-Cum
BENPH	Bendigo and Adelaide Bank Limited	Cap Note 3-Bbsw+3.80% Perp Non-Cum Red T-06-27
BENPI	Bendigo and Adelaide Bank Limited	Cap Note 3-Bbsw+3.20% Perp Non-Cum Red T-12-30
BOQPF	Bank of Queensland Limited	Cap Note 3-Bbsw+3.80% Perp Non-Cum Red T-05-27
BOQPG	Bank of Queensland Limited	Cap Note 3-Bbsw+3.40% Perp Non-Cum Red T-12-28
CBAPI	Commonwealth Bank of Australia	Cap Note 3-Bbsw+3.00% Perp Non-Cum Red T-04-27
CBAPJ	Commonwealth Bank of Australia	Cap Note 3-Bbsw+2.75% Perp Non-Cum Red T-10-26
CBAPK	Commonwealth Bank of Australia	Cap Note 3-Bbsw+2.75% Perp Non-Cum Red T-06-29
CBAPL	Commonwealth Bank of Australia	Cap Note 3-Bbsw+2.85% Perp Non-Cum Red T-06-28
CBAPM	Commonwealth Bank of Australia	Cap Note 3-Bbsw+3.00% Perp Non-Cum Red T-06-30
CGFPC	Challenger Limited	Cap Note 3-Bbsw+4.60% Perp Non-Cum Red T-05-26
CGFPD	Challenger Limited	Cap Note 3-Bbsw+3.60% Perp Non-Cum Red T-05-29
CINPA	Carlton Investments Limited	7% Cumulative Preference
GC1PA	Glennon Small Companies Limited	Cnv Pref 6.80% 30-9-30 Semi Cum Exc Red Res T-3-21
IAGPE	Insurance Australia Group Limited	Cap Note 3-Bbsw+3.50% Perp Non-Cum Red T-06-29
IAGPF	Insurance Australia Group Limited	Cap Note 3-Bbsw+3.20% Perp Non-Cum Red T-12-30
JDOPA	Judo Capital Holdings Limited	Cap Note 3-Bbsw+6.50% Perp Non-Cum Red T-02-29
LFSPA	Latitude Group Holdings Limited	Cap Note 3-Bbsw+4.75% Perp Non-Cum Red T-10-26
MBLPC	Macquarie Bank Limited	Cap Note 3-Bbsw+4.70% Perp Non-Cum Red T-12-25
MBLPD	Macquarie Bank Limited	Cap Note 3-Bbsw+2.90% Perp Non-Cum Red T-09-28
MQGPD	Macquarie Group Limited	Cap Note 3-Bbsw+4.15% Perp Non-Cum Red T-09-26
MQGPE	Macquarie Group Limited	Cap Note 3-Bbsw+2.90% Perp Non-Cum Red T-09-27
MQGPF	Macquarie Group Limited	Cap Note 3-Bbsw+3.70% Perp Non-Cum Red T-09-29
MQGPG	Macquarie Group Limited	Cap Note 3-Bbsw+2.65% Perp Non-Cum Red T-12-31
NABPF	National Australia Bank Limited	Cap Note 3-Bbsw+4.00% Perp Non-Cum Red T-06-26
NABPH	National Australia Bank Limited	Cap Note 3-Bbsw+3.50% Perp Non-Cum Red T-12-27
NABPI	National Australia Bank Limited	Cap Note 3-Bbsw+3.15% Perp Non-Cum Red T-12-29
NABPJ	National Australia Bank Limited	Cap Note 3-Bbsw+2.80% Perp Non-Cum Red T-09-30
NABPK	National Australia Bank Limited	Cap Note 3-Bbsw+2.60% Perp Non-Cum Red T-03-32
RHCPA	Ramsay Health Care Limited	Trans Pref 6-Bbsw+ 4.85% Perp Sub Red T-10-10
SSLPA	Sietel Limited	5.0% Cumulative Preference
SUNPH	Suncorp Group Limited	Cap Note 3-Bbsw+3.00% Perp Non-Cum Red T-06-26
SUNPI	Suncorp Group Limited	Cap Note 3-Bbsw+2.90% Perp Non-Cum Red T-06-28
SUNPJ	Suncorp Group Limited	Cap Note 3-Bbsw+2.80% Perp Non-Cum Red T-06-30
WBSPH	Westpac Banking Corporation	Cap Note 3-Bbsw+3.20% Perp Non-Cum Red T-09-25
WBSPJ	Westpac Banking Corporation	Cap Note 3-Bbsw+3.40% Perp Non-Cum Red T-03-27
WBSPK	Westpac Banking Corporation	Cap Note 3-Bbsw+2.90% Perp Non-Cum Red T-09-29
WBSPM	Westpac Banking Corporation	Cap Note 3-Bbsw+3.40% Perp Non-Cum Red T-09-28
WBSPN	Westpac Banking Corporation	Cap Note 3-Bbsw+3.10% Perp Non-Cum Red T-09-31
WHFPA	Whitefield Industrials Limited	8.0% Cumulative Preference

¹ The yield data for the bonds have been sourced from Bloomberg using the Mid Yield to Convention function as at 31 July 2025

² The coupon data has been sourced from Bloomberg using the Coupon function as at 31 July 2025

³ Monthly liquidity is equal to the total value traded for the security for the month divided by its market capitalisation

All values are as at Jul-25.

Past Performance is not a reliable indicator of future performance.

Information provided does not constitute financial product advice. You should obtain independent advice from an Australian financial services licensee before making any financial decisions. Although ASX Limited ABN 98 008 624 691 and its related bodies corporate ("ASX") has made every effort to ensure the accuracy of the information as at the date of publication, ASX does not give any warranty or representation as to the accuracy, reliability or completeness of the information. To the extent permitted by law, ASX and its employees, officers and contractors shall not be liable for any loss or damage arising in any way (including by way of negligence) from or in connection with any information provided or omitted or from any one acting or refraining to act in reliance on this information.

© Copyright 2024 ASX Operations Pty Limited ABN 42 004 523 782. All rights reserved 2024

Detail

ASX listed date	Maturity / Conv / Reset	Coupon ²	Payment frequency	Payment rank	Issuer type	Announced Ex-date	Announced payment date
08-Dec-17	30-Nov-25	5.25%	Qtrly		Financial Services	28-Aug-25	12-Sep-25
19-Apr-22	11-Apr-27	5.50%	Qtrly	Value (\$m)	Financial Services		
04-Oct-21	01-Oct-26	5.50%	Qtrly	Sr Unsecured	Financial Services		
29-Nov-21	24-Nov-26	5.50%	Qtrly	Sr Unsecured	Funds & Trusts		
08-Oct-21	31-Mar-26	20.00%	Qtrly	2nd lien	Retail - Consumer Discretionary		
20-Nov-20	30-Sep-25	5.50%	S/A	Sr Unsecured	Financial Services		
20-Apr-21	30-Sep-28	4.50%	S/A	Sr Unsecured	Financial Services		
27-Nov-06	N/A	7.98%	S/A	Jr Subordinated	Chemicals	06-Oct-25	15-Oct-25
24-Dec-19	16-Dec-25	8.21%	Qtrly	Jr Subordinated	Financial Services	05-Sep-25	16-Sep-25
21-Dec-22	20-Mar-28	6.69%	Qtrly	Jr Subordinated	Banks		
21-Dec-22	20-Mar-29	6.39%	Qtrly	Jr Subordinated	Banks	09-Sep-25	22-Sep-25
27-Mar-23	20-Mar-30	6.44%	Qtrly	Jr Subordinated	Banks		
21-Mar-24	20-Mar-31	6.59%	Qtrly	Jr Subordinated	Banks	09-Sep-25	22-Sep-25
04-Jan-21	N/A	5.00%	S/A	Preferred	Managed Care		
01-Dec-20	15-Jun-27	7.51%	Qtrly	Jr Subordinated	Banks	02-Sep-25	15-Sep-25
26-Mar-24	13-Dec-30	6.92%	Qtrly	Jr Subordinated	Banks	02-Sep-25	15-Sep-25
01-Dec-20	14-May-27	7.42%	Qtrly	Jr Subordinated	Banks	30-Oct-25	17-Nov-25
15-Nov-22	15-Dec-28	7.11%	Qtrly	Jr Subordinated	Banks	28-Aug-25	15-Sep-25
15-Nov-19	20-Apr-27	6.71%	Qtrly	Jr Subordinated	Banks	04-Sep-25	15-Sep-25
06-Apr-21	20-Oct-26	6.46%	Qtrly	Jr Subordinated	Banks	04-Sep-25	15-Sep-25
01-Apr-22	15-Jun-29	6.46%	Qtrly	Jr Subordinated	Banks	04-Sep-25	15-Sep-25
16-Nov-22	15-Jun-28	6.56%	Qtrly	Jr Subordinated	Banks	04-Sep-25	15-Sep-25
13-Jun-23	17-Jun-30	6.71%	Qtrly	Jr Subordinated	Banks		
28-Nov-20	25-May-26	8.31%	Qtrly	Jr Subordinated	Life Insurance	14-Aug-25	25-Aug-25
06-Apr-23	25-May-29	7.31%	Qtrly	Jr Subordinated	Life Insurance	14-Aug-25	25-Aug-25
15-Mar-86	N/A	7.00%	Annual	Preferred	Financial Services	29-Aug-25	17-Sep-25
07-Dec-20	30-Sep-30	5.60%	S/A	Subordinated	Financial Services		
23-Dec-22	15-Jun-29	7.21%	Qtrly	Jr Subordinated	Property & Casualty Insurance	02-Sep-25	15-Sep-25
27-Mar-24	15-Dec-30	6.91%	Qtrly	Jr Subordinated	Property & Casualty Insurance	02-Sep-25	15-Sep-25
17-Nov-23	16-Feb-29	10.30%	Qtrly	Jr Subordinated	Consumer Finance		
29-Sep-21	27-Oct-26	8.45%	Qtrly	Subordinated	Life Insurance	16-Oct-25	27-Oct-25
03-Jun-20	21-Dec-25	8.36%	Qtrly	Jr Subordinated	Banks	04-Sep-25	22-Sep-25
30-Aug-21	07-Sep-28	6.62%	Qtrly	Jr Subordinated	Banks	21-Aug-25	08-Sep-25
28-Mar-19	10-Sep-26	7.87%	Qtrly	Jr Subordinated	Diversified Banks	01-Sep-25	10-Sep-25
18-Mar-21	18-Sep-27	6.60%	Qtrly	Jr Subordinated	Diversified Banks	02-Sep-25	18-Sep-25
18-Jul-22	12-Sep-29	7.43%	Qtrly	Jr Subordinated	Diversified Banks	27-Aug-25	12-Sep-25
17-Sep-24	15-Dec-31	6.36%	Qtrly	Jr Subordinated	Diversified Banks	28-Aug-25	15-Sep-25
21-Mar-19	17-Jun-26	7.71%	Qtrly	Jr Subordinated	Banks	04-Sep-25	17-Sep-25
18-Dec-20	17-Dec-27	7.21%	Qtrly	Jr Subordinated	Banks	04-Sep-25	17-Sep-25
08-Jul-22	17-Dec-29	6.86%	Qtrly	Jr Subordinated	Banks	04-Sep-25	17-Sep-25
15-Sep-23	17-Sep-30	6.51%	Qtrly	Jr Subordinated	Banks		
07-Jun-24	17-Mar-32	6.31%	Qtrly	Jr Subordinated	Banks	04-Sep-25	17-Sep-25
24-May-05	N/A	8.86%	S/A	Preferred	Health Care Facilities & Services	26-Sep-25	20-Oct-25
15-Mar-86	N/A	5.00%	Annual	Preferred	Financial Services		
18-Dec-19	17-Jun-26	6.71%	Qtrly	Jr Subordinated	Property & Casualty Insurance	02-Sep-25	17-Sep-25
24-Sep-21	17-Jun-28	6.61%	Qtrly	Jr Subordinated	Property & Casualty Insurance	02-Sep-25	17-Sep-25
15-May-24	17-Jun-30	6.51%	Qtrly	Jr Subordinated	Property & Casualty Insurance	02-Sep-25	17-Sep-25
14-Mar-18	22-Sep-25	6.86%	Qtrly	Jr Subordinated	Banks	11-Sep-25	22-Sep-25
07-Dec-20	22-Mar-27	7.06%	Qtrly	Jr Subordinated	Banks	11-Sep-25	22-Sep-25
16-Sep-21	21-Sep-29	6.56%	Qtrly	Jr Subordinated	Banks	11-Sep-25	22-Sep-25
21-Jul-22	22-Sep-28	7.06%	Qtrly	Jr Subordinated	Banks	11-Sep-25	22-Sep-25
19-Dec-23	22-Sep-31	6.76%	Qtrly	Jr Subordinated	Banks	11-Sep-25	22-Sep-25
15-Mar-86	N/A	0.00%	S/A	Preferred	Financial Services		

Activity

Mkt cap (\$m)	Traded value (\$)	Traded volume	Number of trades	Monthly liquidity % ³
\$ 33.93	\$ 876,439.59	872,668	69	2.58%
\$ 10.82	\$ 382,719.81	267,367	16	3.54%
\$ 20.00	\$ 305,562.00	112,860	10	1.53%
\$ 11.28	\$ -	-	-	0.00%
\$ 4.08	\$ -	-	-	0.00%
\$ 16.71	\$ 272,582.90	2,926	21	1.63%
\$ 19.44	\$ 427,153.29	5,071	26	2.20%
\$ 219.65	\$ 1,225,776.15	13,971	256	0.56%
\$ 279.95	\$ 3,807,276.14	37,442	199	1.36%
\$ 1,547.55	\$ 19,892,596.39	193,096	2,587	1.29%
\$ 1,342.75	\$ 20,381,800.24	199,262	2,356	1.52%
\$ 1,542.90	\$ 22,006,382.66	214,031	1,565	1.43%
\$ 1,771.57	\$ 25,887,821.23	249,222	2,039	1.46%
\$ 437.88	\$ 6,424,892.01	74,725	590	1.47%
\$ 521.54	\$ 8,517,616.37	82,547	990	1.63%
\$ 315.54	\$ 6,924,441.59	66,708	636	2.19%
\$ 266.53	\$ 6,957,447.63	67,330	622	2.61%
\$ 417.64	\$ 8,803,141.38	84,865	694	2.11%
\$ 1,694.06	\$ 24,331,916.46	237,423	1,986	1.44%
\$ 1,201.24	\$ 18,421,168.16	181,127	1,378	1.53%
\$ 1,811.78	\$ 22,482,285.54	218,597	1,889	1.24%
\$ 1,832.30	\$ 28,278,569.58	275,562	1,982	1.54%
\$ 1,627.52	\$ 23,384,148.87	223,204	2,211	1.44%
\$ 400.21	\$ 6,972,559.25	67,513	796	1.74%
\$ 368.83	\$ 7,361,380.60	70,439	692	2.00%
\$ 0.18	\$ -	-	-	0.00%
\$ 5.46	\$ 81,455.00	7,850	2	1.49%
\$ 523.85	\$ 6,859,406.52	65,645	960	1.31%
\$ 366.24	\$ 5,410,995.98	51,994	540	1.48%
\$ 84.41	\$ 1,910,399.89	16,981	210	2.26%
\$ 147.60	\$ 4,134,433.96	42,106	381	2.80%
\$ 653.72	\$ 17,158,232.94	168,701	1,316	2.62%
\$ 675.80	\$ 8,882,656.67	86,646	675	1.31%
\$ 943.07	\$ 14,556,445.96	141,045	1,794	1.54%
\$ 742.20	\$ 10,443,556.52	102,307	848	1.41%
\$ 794.70	\$ 16,376,042.53	155,193	1,516	2.06%
\$ 1,544.25	\$ 22,181,320.62	217,095	2,098	1.44%
\$ 1,925.41	\$ 28,318,797.27	275,976	1,891	1.47%
\$ 2,492.86	\$ 33,766,577.66	324,785	2,178	1.35%
\$ 2,088.20	\$ 23,807,714.06	228,077	2,144	1.14%
\$ 1,303.00	\$ 18,909,952.18	182,528	1,518	1.45%
\$ 1,035.00	\$ 13,895,626.87	134,088	1,324	1.34%
\$ 279.76	\$ 4,214,129.95	39,590	501	1.51%
\$ 0.08	\$ -	-	-	0.00%
\$ 394.84	\$ 5,149,031.63	50,796	423	1.30%
\$ 415.94	\$ 8,991,288.56	87,842	784	2.16%
\$ 372.38	\$ 3,492,694.02	33,971	434	0.94%
\$ 1,693.89	\$ 30,726,540.19	307,082	1,458	1.81%
\$ 1,778.07	\$ 22,204,566.72	215,746	1,896	1.25%
\$ 1,813.53	\$ 19,848,624.74	191,968	1,716	1.09%
\$ 1,577.00	\$ 18,488,272.73	176,993	1,386	1.17%