



Hybrids:

Monthly update - June 2026



Month: Jun-26

Trading days: 21

Period ending: Tuesday, 30 June 2026

Snapshot by category

Australian segment bond segment	Number listed	Market cap (\$m)	Trades total (#)	Trades per day (#)	Volume (#)	Value (\$m)
Convertible preference shares and capital notes	41	38,413	73,783	3,513	7,434,628	756.6
Convertible bonds	7	322	428	20	610,025	6.8
Hybrid securities	0	0	0	0	0	0.0
Total	48	38,735	74,211	3,534	8,044,653	763.4

Recent listings

Entity	ASX code	Size (\$m)	Type	Listing date	Issue price	Maturity / Conv / Reset	Interest rate / Dividend	Distribution frequency	Last price
Latitude Group Holdings Limited	LFSPB	134.6	Convertible Preference Shares and Capital Nc	29-Apr-2026	\$100.00	N/A	8.62%	Qtrly	\$99.50
Macquarie Group Limited	MQGPG	1,500.0	Convertible Preference Shares and Capital Nc	17-Sep-2024	\$100.00	15-Dec-2031	6.82%	Qtrly	\$104.88
National Australia Bank Limited	NABPK	1,000.0	Convertible Preference Shares and Capital Nc	07-Jun-2024	\$100.00	17-Mar-2032	6.78%	Qtrly	\$105.73
Suncorp Group Limited	SUNPJ	360.0	Convertible Preference Shares and Capital Nc	15-May-2024	\$100.00	17-Jun-2030	6.98%	Qtrly	\$104.60
Insurance Australia Group Limited	IAGPF	350.0	Convertible Preference Shares and Capital Nc	27-Mar-2024	\$100.00	15-Dec-2030	7.37%	Qtrly	\$105.86
Bendigo and Adelaide Bank Limited	BENPI	300.0	Convertible Preference Shares and Capital Nc	26-Mar-2024	\$100.00	13-Dec-2030	7.38%	Qtrly	\$105.20
Australia and New Zealand Banking Group Limited	AN3PL	1,700.0	Convertible Preference Shares and Capital Nc	21-Mar-2024	\$100.00	20-Mar-2031	7.19%	Qtrly	\$105.65
Westpac Banking Corporation	WBCPM	1,750.0	Convertible Preference Shares and Capital Nc	19-Dec-2023	\$100.00	22-Sep-2031	7.41%	Qtrly	\$107.33
Judo Capital Holdings Limited	JDOPA	75.0	Convertible Preference Shares and Capital Nc	17-Nov-2023	\$100.00	16-Feb-2029	10.30%	Qtrly	\$110.95
National Australia Bank Limited	NABPJ	1,250.0	Convertible Preference Shares and Capital Nc	15-Sep-2023	\$100.00	17-Sep-2030	6.98%	Qtrly	\$105.77
Commonwealth Bank of Australia	CBAPM	1,550.0	Convertible Preference Shares and Capital Nc	13-Jun-2023	\$100.00	17-Jun-2030	7.17%	Qtrly	\$106.50
Challenger Limited	CGFPD	350.0	Convertible Preference Shares and Capital Nc	06-Apr-2023	\$100.00	25-May-2029	7.59%	Qtrly	\$105.74
Australia and New Zealand Banking Group Limited	AN3PK	1,500.0	Convertible Preference Shares and Capital Nc	27-Mar-2023	\$100.00	20-Mar-2030	7.04%	Qtrly	\$104.62

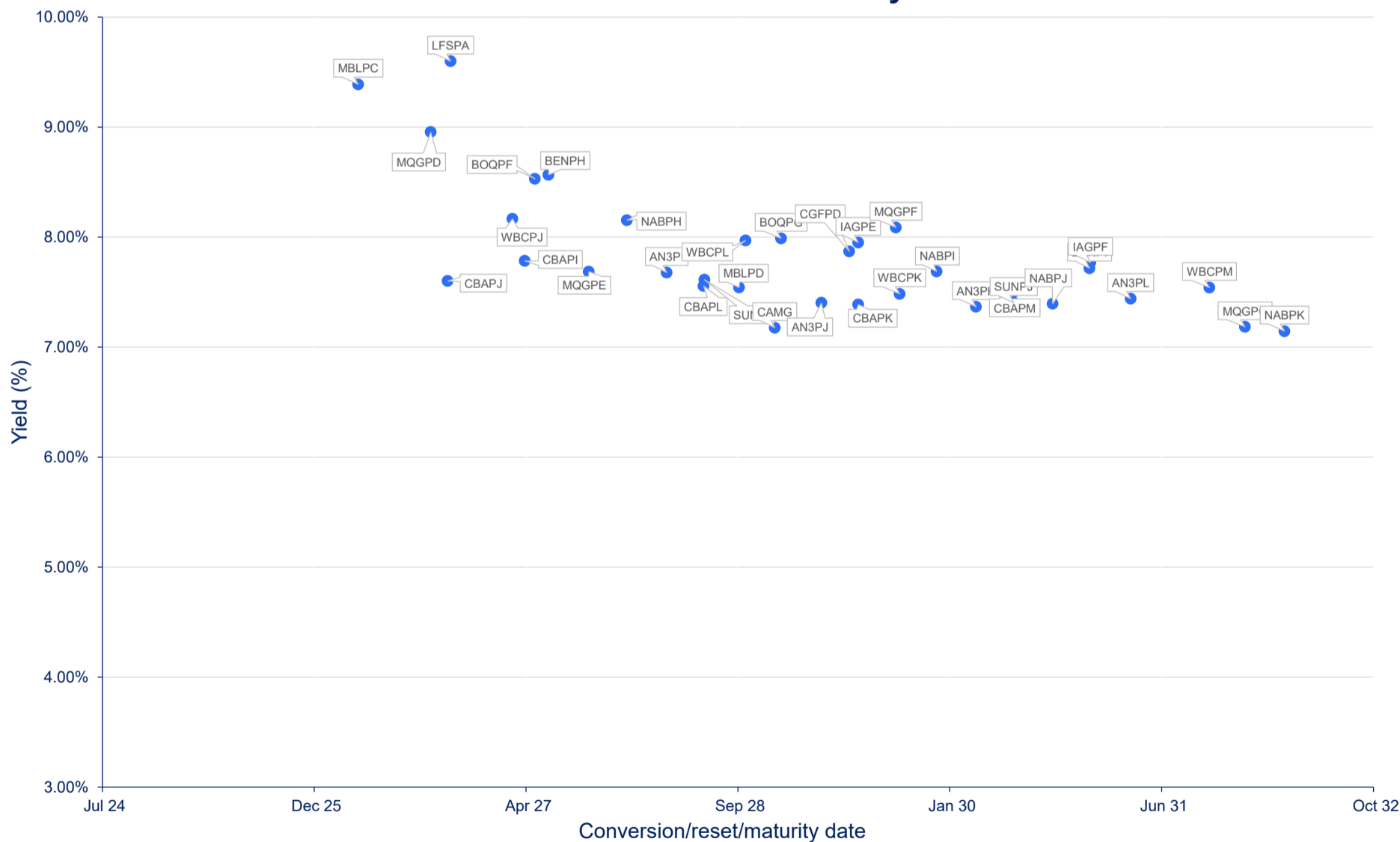
*BBSW = Bank Bill Swap Rate

† As of the date of this report this security has not traded, the Last Price reflects the Issue Price

Most actively traded securities by value

ASX code	Security type	Value (\$)	Value (%)	Volume	Volume (%)
NABPH	Convertible Preference Shares and Capital Notes	49,183,239	6.44%	477,807	5.94%
CBAPL	Convertible Preference Shares and Capital Notes	41,147,738	5.39%	401,327	4.99%
WBCPJ	Convertible Preference Shares and Capital Notes	38,707,203	5.07%	380,759	4.73%
CBAPM	Convertible Preference Shares and Capital Notes	34,856,167	4.57%	332,459	4.13%
AN3PK	Convertible Preference Shares and Capital Notes	34,040,324	4.46%	329,121	4.09%
Total Top 5		197,934,670.98	25.93%	1,921,473	23.89%

Yield versus conversion/reset/maturity date





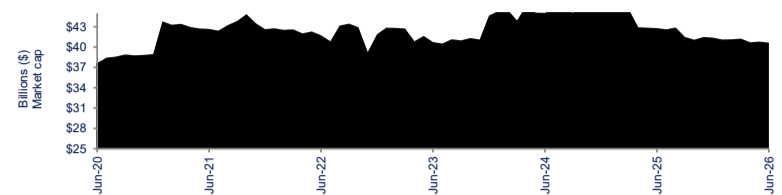
Hybrids:

Monthly update - June 2026

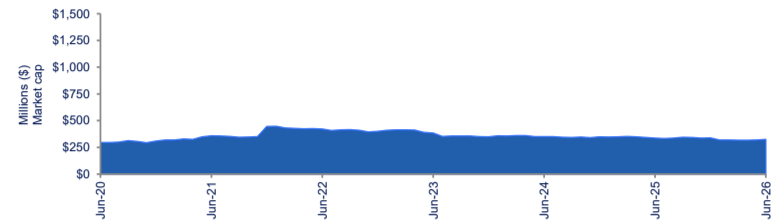


Performance and trading activity breakdown by category

Convertible preference shares and capital notes	Last 12 months			Last month	
	Jun-25	Jun-26	% change	May-26	% change
Market cap (\$m)	42,616.9	38,413.2	-9.9%	40,645.7	-5.5%
Number listed (actual)	45	41	-8.9%	43	-4.7%
Monthly volume	7,129,380	7,434,628	4.3%	6,690,984	11.1%
Monthly trades	51,111	73,783	44.4%	76,175	-3.1%
Monthly value (\$m)	729.4	756.6	3.7%	678.5	11.5%



Convertible bonds	Last 12 months			Last month	
	Jun-25	Jun-26	% change	May-26	% change
Market cap (\$m)	332.8	322.1	-3.2%	324.6	-0.8%
Number listed (actual)	8	7	-12.5%	7	0.0%
Monthly volume	983,657	610,025	-38.0%	1,037,935	-41.2%
Monthly trades	424	428	0.9%	352	21.6%
Month value (\$m)	5.1	6.8	34.2%	4.2	62.5%



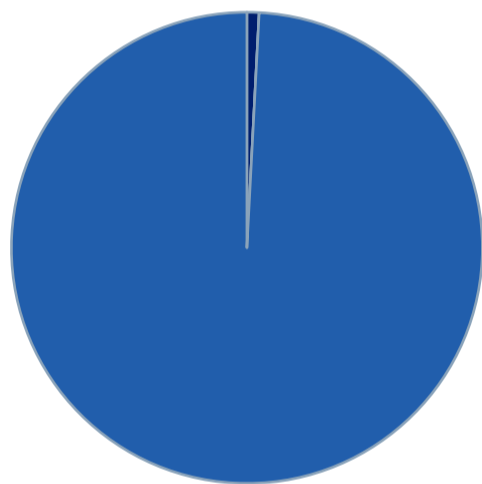
Hybrid securities	Last 12 months			Last month	
	Jun-25	Jun-26	% change	May-26	% change
Market cap (\$m)	-	-	n/a	-	n/a
Number listed (actual)	-	-	n/a	-	n/a
Monthly volume	-	-	n/a	-	n/a
Monthly trades	-	-	n/a	-	n/a
Monthly value (\$m)	-	-	n/a	-	n/a



Total hybrid market	Last 12 months			Last month	
	Jun-25	Jun-26	% change	May-26	% change
Market cap (\$m)	42,949.6	38,735.2	-9.8%	40,970.3	-5.5%
Number listed (actual)	53	48	-9.4%	50	-4.0%
Monthly volume	8,113,037	8,044,653	-0.8%	7,728,919	4.1%
Monthly trades	51,535	74,211	44.0%	76,527	-3.0%
Monthly value (\$m)	734.5	763.4	3.9%	682.7	11.8%

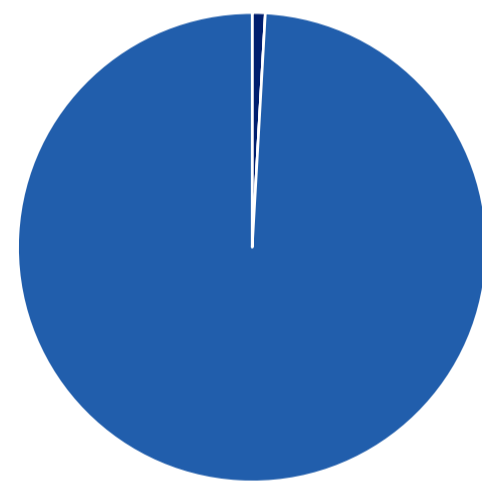


Hybrids mkt cap breakdown by type



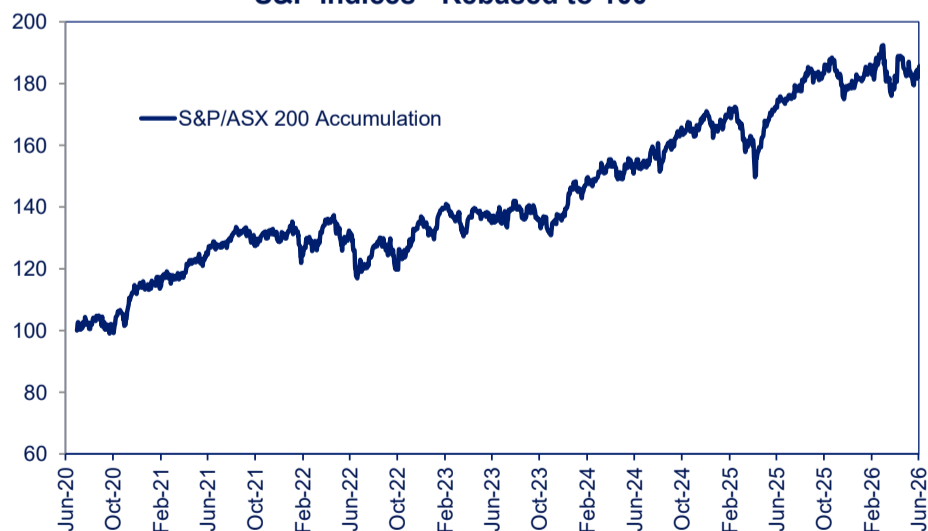
- Convertible Bonds, \$322 m
- Hybrid Securities, \$ m
- Convertible Preference Shares and Capital Notes, \$38,413 m

Hybrids breakdown by traded value

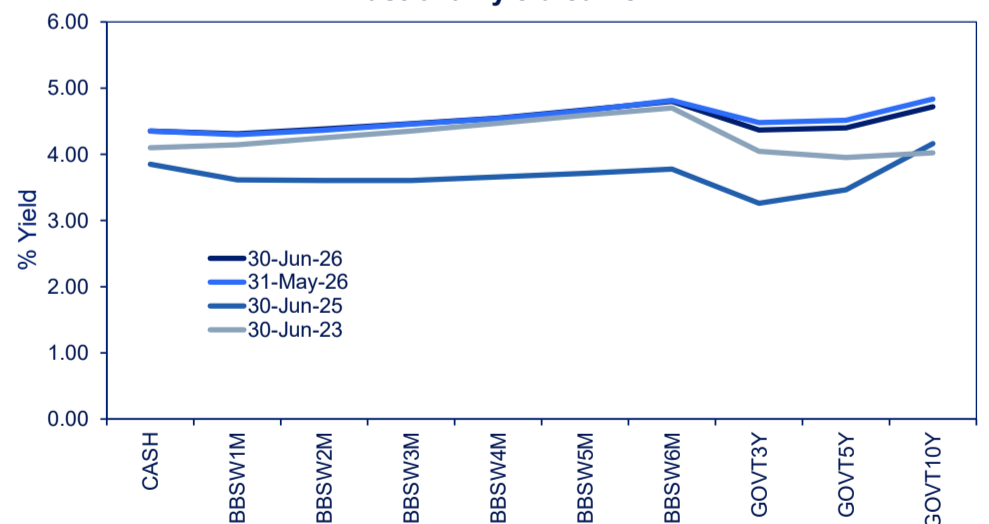


- Convertible Bonds, \$6,819 k
- Hybrid Securities, \$ k
- Convertible Preference Shares and Capital Notes, \$756,606 k

S&P indices - Rebased to 100



Australian yield curve





Spotlight on hybrids:

Monthly update - June 2026



ASX profiles			Detail							Activity					Prices				Returns		
ASX code	Issuer	Description	ASX listed date	Maturity / Conv / Reset	Coupon ²	Payment frequency	Payment rank	Issuer type	Announced Ex-date	Announced payment date	Mkt cap (\$m)	Traded value (\$)	Traded volume	Number of trades	Monthly liquidity % ³	Last *	Year high	Year low	Yield (%) ¹	1 month price return	1 year price return
Convertible bonds																					
CAMG	Clime Capital Limited	Convert Bond 6.50% 30-11-28 Mth Red	08-Dec-17	30-Nov-28	6.50%	Qtrly	Sr Unsecured	Financial Services	01-Jul-26	14-Jul-26	\$ 38.57	\$ 381,801.05	387,274	20	0.99%	0.99	1.02	0.98	7.18%	0.41%	-0.80%
ECPGA	ECP Emerging Growth Limited	Convert Bond 6.50% 11-04-27 Qly Sub Red T-4-24	19-Apr-22	11-Apr-27	5.50%	Qtrly	Sr Unsecured	Financial Services			\$ 10.60	\$ 49,592.20	35,423	3	0.47%	1.40	1.47	1.40	n/a	-0.71%	-1.41%
FSIGA	Flagship Investments Limited	Convert Bond 6.50% 01-10-26 Qly Red	04-Oct-21	01-Oct-26	5.50%	Qtrly	Sr Unsecured	Financial Services			\$ 20.00	\$ 205,442.10	76,223	5	1.03%	2.70	2.75	2.60	n/a	-1.10%	0.00%
GFLGA	Global Masters Fund Limited	Convert Bond 5.5% 24-11-26 Qly Red Step T-11-24	29-Nov-21	24-Nov-26	5.50%	Qtrly	Sr Unsecured	Funds & Trusts			\$ 8.26	\$ 124,000.00	40,000	2	1.50%	3.10	3.67	3.10	n/a	0.00%	-17.33%
NACGA	Naos Ex-50 Opportunities Company Limited	Convert Bond 6.50% 30-09-27 Semi Red Step T-09-26	20-Nov-20	30-Sep-26	6.50%	S/A	Sr Unsecured	Financial Services			\$ 16.87	\$ 30,303,405.50	288,852	3,198	1.69%	96.40	98.35	92.00	n/a	0.42%	5.36%
NCCGA	Naos Emerging Opportunities Company Limited	Convert Bond 4.50% 30-09-28 Semi Non-Cum Red Step	20-Apr-21	30-Sep-28	4.50%	S/A	Sr Unsecured	Financial Services			\$ 20.47	\$ 102,333.00	1,147	6	0.50%	89.00	89.50	84.00	n/a	1.14%	10.56%
NFNG	Nufarm Finance (NZ) Limited	Convert Bond 6-Bbsw+3.90% Perp Sub Non-Cum Exh Stp	27-Nov-06	N/A	8.62%	S/A	Jr Subordinated	Chemicals	06-Oct-26	15-Oct-26	\$ 207.33	\$ 5,619,552.04	66,454	387	2.71%	82.60	92.00	77.00	10.60%	-1.21%	-5.17%
Hybrid securities																					
Converting preference shares and capital notes																					
AN3PI	Australia and New Zealand Banking Group Lim	Cap Note 3-Bbsw+3.00 Perp Non-Cum Red T-03-28	21-Dec-22	20-Mar-28	7.29%	Qtrly	Jr Subordinated	Banks	08-Sep-26	21-Sep-26	\$ 1,543.05	\$ 32,921,760.18	321,194	2,490	2.13%	102.87	104.55	101.48	7.68%	-0.64%	-0.13%
AN3PJ	Australia and New Zealand Banking Group Lim	Cap Note 3-Bbsw+2.70% Perp Non-Cum Red T-03-29	21-Dec-22	20-Mar-29	6.99%	Qtrly	Jr Subordinated	Banks	08-Sep-26	21-Sep-26	\$ 1,353.23	\$ 24,120,934.40	234,556	4,591	1.78%	103.30	104.88	101.58	7.40%	0.11%	0.78%
AN3PK	Australia and New Zealand Banking Group Lim	Cap Note 3-Bbsw+2.75% Perp Non-Cum Red T-03-30	27-Mar-23	20-Mar-30	7.04%	Qtrly	Jr Subordinated	Banks	08-Sep-26	21-Sep-26	\$ 1,569.30	\$ 34,040,323.61	329,121	2,753	2.17%	104.62	105.89	102.22	7.37%	0.23%	2.10%
AN3PL	Australia and New Zealand Banking Group Lim	Cap Note 3-Bbsw+2.90% Perp Non-Cum Red T-03-31	21-Mar-24	20-Mar-31	7.19%	Qtrly	Jr Subordinated	Banks	08-Sep-26	21-Sep-26	\$ 1,796.03	\$ 30,303,405.50	288,852	3,198	1.69%	105.65	106.51	103.14	7.44%	0.23%	2.23%
AYUPA	Australian Unity Limited	Mci Cap Note 5.00% Perp Semi Non-Cum	04-Jan-21	N/A	5.00%	S/A	Preferred	Managed Care			\$ 467.00	\$ 17,152,178.26	275,127	1,618	3.67%	60.70	89.00	55.00	8.64%	4.84%	-29.10%
BENPH	Bendigo and Adelaide Bank Limited	Cap Note 3-Bbsw+3.80% Perp Non-Cum Red T-06-27	01-Dec-20	15-Jun-27	7.97%	Qtrly	Jr Subordinated	Banks	02-Sep-26	15-Sep-26	\$ 514.55	\$ 12,241,279.20	120,176	1,929	2.38%	102.41	105.18	101.36	8.57%	-0.09%	-0.30%
BENPI	Bendigo and Adelaide Bank Limited	Cap Note 3-Bbsw+3.20% Perp Non-Cum Red T-12-30	26-Mar-24	13-Dec-30	7.38%	Qtrly	Jr Subordinated	Banks	01-Sep-26	14-Sep-26	\$ 315.60	\$ 6,057,705.94	57,730	556	1.92%	105.20	107.00	103.00	7.72%	-0.52%	2.27%
BOQPF	Bank of Queensland Limited	Cap Note 3-Bbsw+3.80% Perp Non-Cum Red T-05-27	01-Dec-20	14-May-27	8.24%	Qtrly	Jr Subordinated	Banks	28-Jul-26	17-Aug-26	\$ 267.41	\$ 7,547,034.68	73,866	752	2.82%	102.85	104.44	100.48	8.53%	1.20%	-0.46%
BOQPG	Bank of Queensland Limited	Cap Note 3-Bbsw+3.40% Perp Non-Cum Red T-12-28	15-Nov-22	15-Dec-28	7.57%	Qtrly	Jr Subordinated	Banks	28-Aug-26	15-Sep-26	\$ 419.56	\$ 11,985,063.32	115,710	1,034	2.86%	104.89	105.97	100.40	7.99%	2.02%	1.74%
CBAPI	Commonwealth Bank of Australia	Cap Note 3-Bbsw+3.00% Perp Non-Cum Red T-04-27	15-Nov-19	20-Apr-27	7.17%	Qtrly	Jr Subordinated	Banks	04-Sep-26	15-Sep-26	\$ 1,677.56	\$ 24,628,279.82	242,673	1,986	1.47%	101.67	103.95	100.75	7.78%	-0.52%	-1.29%
CBAPJ	Commonwealth Bank of Australia	Cap Note 3-Bbsw+2.75% Perp Non-Cum Red T-10-26	06-Apr-21	20-Oct-26	6.92%	Qtrly	Jr Subordinated	Banks	04-Sep-26	15-Sep-26	\$ 1,190.38	\$ 23,065,217.26	229,678	1,413	1.94%	100.88	103.39	99.91	7.60%	-0.39%	-0.90%
CBAPK	Commonwealth Bank of Australia	Cap Note 3-Bbsw+2.75% Perp Non-Cum Red T-06-29	01-Apr-22	15-Jun-29	6.92%	blo	Jr Subordinated	Banks	04-Sep-26	15-Sep-26	\$ 1,821.05	\$ 25,834,768.99	249,961	3,910	1.42%	104.06	106.50	102.33	7.39%	-0.10%	1.12%
CBAPL	Commonwealth Bank of Australia	Cap Note 3-Bbsw+2.85% Perp Non-Cum Red T-06-28	16-Nov-22	15-Jun-28	7.02%	Qtrly	Jr Subordinated	Banks	04-Sep-26	15-Sep-26	\$ 1,838.52	\$ 41,147,738.12	401,327	2,497	2.24%	103.44	105.00	101.20	7.56%	0.22%	1.02%
CBAPM	Commonwealth Bank of Australia	Cap Note 3-Bbsw+3.00% Perp Non-Cum Red T-06-30	13-Jun-23	17-Jun-30	7.17%	Qtrly	Jr Subordinated	Banks	04-Sep-26	15-Sep-26	\$ 1,650.75	\$ 34,856,167.28	332,459	3,923	2.11%	106.50	108.00	103.49	7.50%	0.51%	2.21%
CGFPD	Challenger Limited	Cap Note 3-Bbsw+3.60% Perp Non-Cum Red T-05-29	06-Apr-23	25-May-29	7.59%	Qtrly	Jr Subordinated	Life Insurance	14-Aug-26	25-Aug-26	\$ 370.09	\$ 9,809,764.99	94,080	1,033	2.65%	105.74	107.47	103.01	7.87%	0.37%	1.59%
CINPA	Carlton Investments Limited	7% Cumulative Preference	15-Mar-86	N/A	7.00%	Annual	Preferred	Financial Services			\$ 0.19	\$ -	-	-	0.00%	2.30	2.33	2.30	n/a	0.00%	5.02%
GC1PA	Glennon Small Companies Limited	Cnv Pref 6.80% 30-9-30 Semi Cum Exc Red Res T-3-21	07-Dec-20	30-Sep-30	5.60%	S/A	Subordinated	Financial Services			\$ 5.14	\$ 999.10	103	1	0.02%	9.70	10.85	9.20	21.60%	1.04%	-4.90%
IAGPE	Insurance Australia Group Limited	Cap Note 3-Bbsw+3.50% Perp Non-Cum Red T-06-29	23-Dec-22	15-Jun-29	7.67%	Qtrly	Jr Subordinated	Property & Casualty Insurance			\$ 528.95	\$ 12,891,513.43	123,498	1,242	2.44%	105.79	107.50	102.49	7.95%	-0.62%	2.06%
IAGPF	Insurance Australia Group Limited	Cap Note 3-Bbsw+3.20% Perp Non-Cum Red T-12-30	27-Mar-24	15-Dec-30	7.37%	Qtrly	Jr Subordinated	Property & Casualty Insurance			\$ 370.51	\$ 6,020,339.43	57,533	663	1.62%	105.86	106.98	103.06	7.77%	0.84%	2.67%
JDQPA	Judo Capital Holdings Limited	Cap Note 3-Bbsw+6.50% Perp Non-Cum Red T-02-29	17-Nov-23	16-Feb-29	10.30%	Qtrly	Jr Subordinated	Banks	06-Aug-26	17-Aug-26	\$ 83.21	\$ 2,964,777.20	26,529	255	3.56%	110.95	116.50	108.00	n/a	-2.67%	-0.80%
LFSPA	Latitude Group Holdings Limited	Cap Note 3-Bbsw+4.75% Perp Non-Cum Red T-10-26	29-Sep-21	27-Oct-26	9.12%	Qtrly	Subordinated	Life Insurance	16-Jul-26	27-Jul-26	\$ 75.74	\$ 2,618,838.23	26,066	202	3.46%	101.08	102.25	96.50	9.60%	0.36%	3.35%
LFSPB	Latitude Group Holdings Limited	Cap Note 3-Bbsw+4.15% Perp Cum Red T-04-31	29-Apr-26	N/A	8.62%	Qtrly	Subordinated	Life Insurance	17-Jul-26	28-Jul-26	\$ 133.97	\$ 3,772,129.02	37,980	164	2.82%	99.50	102.15	98.70	8.87%	-0.49%	n/a
MBLPC	Macquarie Bank Limited	Cap Note 3-Bbsw+4.70% Perp Non-Cum Red T-12-26	03-Jun-20	23-Mar-26	9.01%	Qtrly	Jr Subordinated	Banks	03-Sep-26	21-Sep-26	\$ 650.83	\$ 14,578,017.59	144,317	1,575	2.24%	101.53	104.84	100.22	9.39%	-1.71%	0.14%
MBLPD	Macquarie Bank Limited	Cap Note 3-Bbsw+2.90% Perp Non-Cum Red T-09-28	30-Aug-21	07-Sep-28	6.98%	Qtrly	Jr Subordinated	Banks	20-Aug-26	07-Sep-26	\$ 676.13	\$ 9,362,190.28	91,189	1,646	1.38%	103.25	105.30	101.62	7.54%	0.82%	1.08%
MQGPD	Macquarie Group Limited	Cap Note 3-Bbsw+4.15% Perp Non-Cum Red T-09-26	28-Mar-19	10-Sep-26	8.22%	Qtrly	Jr Subordinated	Diversified Banks	01-Sep-26	10-Sep-26	\$ 910.29	\$ 27,317,806.01	272,387	1,943	3.00%	100.53	104.82	99.96	8.96%	0.38%	-2.21%
MQGPE	Macquarie Group Limited	Cap Note 3-Bbsw+2.90% Perp Non-Cum Red T-09-27	18-Mar-21	18-Sep-27	7.16%	Qtrly	Jr Subordinated	Diversified Banks	02-Sep-26	18-Sep-26	\$ 739.08	\$ 19,029,909.91	187,907	1,780	2.57%	101.88	104.00	100.40	7.69%	-0.22%	0.11%
MQGPF	Macquarie Group Limited	Cap Note 3-Bbsw+3.70% Perp Non-Cum Red T-09-29	18-Jul-22	12-Sep-29	7.88%	Qtrly	Jr Subordinated	Diversified Banks	27-Aug-26	14-Sep-26	\$ 796.50	\$ 14,153,275.18	134,312	1,846	1.78%	106.20	108.75	104.46	8.09%	0.85%	1.23%
MQGPG	Macquarie Group Limited	Cap Note 3-Bbsw+2.65% Perp Non-Cum Red T-12-31	17-Sep-24	15-Dec-31	6.82%	Qtrly	Jr Subordinated	Diversified Banks	28-Aug-26	15-Sep-26	\$ 1,573.20	\$ 32,073,773.56	310,916	2,484	2.04%	104.88	105.51	101.21	7.18%	0.90%	3.03%
NABPH	National Australia Bank Limited	Cap Note 3-Bbsw+3.50% Perp Non-Cum Red T-12-27	18-Dec-20	17-Dec-27	7.68%	Qtrly	Jr Subordinated	Banks	03-Sep-26	17-Sep-26	\$ 2,464.70	\$ 49,183,238.67	477,807	3,517	2.00%	103.30	105.11	101.32	8.15%	-0.51%	-0.40%
NABPI	National Australia Bank Limited	Cap Note 3-Bbsw+3.15% Perp Non-Cum Red T-12-29	08-Jul-22	17-Dec-29	7.33%	Qtrly	Jr Subordinated	Banks	03-Sep-26	17-Sep-26	\$ 2,115.60	\$ 32,713,082.41	312,341	2,577	1.55%	105.78	106.68	103.14	7.69%	0.36%	1.91%
NABPJ	National Australia Bank Limited	Cap Note 3-Bbsw+2.80% Perp Non-Cum Red T-09-30	15-Sep-23	17-Sep-30	6.98%	Qtrly	Jr Subordinated	Banks	03-Sep-26	17-Sep-26	\$ 1,322.13	\$ 30,268,037.46	289,725	2,363	2.29%	105.77	105.97	102.62	7.40%	1.01%	2.79%
NABPK	National Australia Bank Limited	Cap Note 3-Bbsw+2.60% Perp Non-Cum Red T-03-32	07-Jun-24	17-Mar-32	6.78%	Qtrly	Jr Subordinated	Banks	03-Sep-26	17-Sep-26	\$ 1,057.30	\$ 22,229,207.19	211,759	1,850	2.10%	105.73	108.53	102.70	7.15%	0.24%	1.86%
RHCPA	Ramsay Health Care Limited	Trans Pref 6-Bbsw+ 4.85% Perp Sub Red T-10-10	24-May-05	N/A	9.58%	S/A	Preferred	Health Care Facilities & Services	29-Sep-26	20-Oct-26	\$ 278.20	\$ 5,192,344.06	48,703	382	1.87%	107.00	109.75	104.78	9.19%	0.47%	0.84%
SSLPA	Sietel Limited	5.0% Cumulative Preference	15-Mar-86	N/A	5.00%	Annual	Preferred	Financial Services			\$ 0.08	\$ -	-	-	0.00%	1.00	-	-	n/a	0.00%	0.00%
SUNPI	Suncorp Group Limited	Cap Note 3-Bbsw+2.90% Perp Non-Cum Red T-06-28	24-Sep-21	17-Jun-28	7.08%	Qtrly	Jr Subordinated	Property & Casualty Insurance	02-Sep-26	17-Sep-26	\$ 417.64	\$ 14,192,163.86	138,275	1,210	3.40%	103.12	104.75	101.32	7.61%	0.04%	0.94%
SUNPJ	Suncorp Group Limited	Cap Note 3-Bbsw+2.80% Perp Non-Cum Red T-06-30	15-May-24	17-Jun-30	6.98%	Qtrly	Jr Subordinated	Property & Casualty Insurance	02-Sep-26	17-Sep-26	\$ 376.56	\$ 5,161,078.68	49,497	486	1.37%	104.60	106.50	102.11	7.40%	0.02%	2.00%
WBPCJ	Westpac Banking Corporation	Cap Note 3-Bbsw+3.40% Perp Non-Cum Red T-03-27	07-Dec-20	22-Mar-27	7.71%	Qtrly	Jr Subordinated	Banks	11-Sep-26	22-Sep-26	\$ 1,750.33	\$ 38,707,203.09	380,759	4,370	2.21%	101.59	104.41	100.85	8.17%	-0.73%	-1.03%
WBPCK	Westpac Banking Corporation	Cap Note 3-Bbsw+2.90% Perp Non-Cum Red T-09-29	16-Sep-21	21-Sep-29	7.21%	Qtrly	Jr Subordinated	Banks	10-Sep-26	21-Sep-26	\$ 1,837.50	\$ 23,617,944.92	226,739	2,486	1.29%	105.00	106.04	102.52	7.48%	0.21%	