



Hybrids:

Monthly update - March 2026



Month: Mar-26

Trading days: 22

Period ending: Tuesday, 31 March 2026

Snapshot by category

Australian segment bond segment	Number listed	Market cap (\$m)	Trades total (#)	Trades per day (#)	Volume (#)	Value (\$m)
Convertible preference shares and capital notes	43	40,694	48,924	2,224	5,961,067	608.6
Convertible bonds	7	317	286	13	1,617,848	3.6
Hybrid securities	0	0	0	0	0	0.0
Total	50	41,012	49,210	2,237	7,578,915	612.2

Recent listings

Entity	ASX code	Size (\$m)	Type	Listing date	Issue price	Maturity / Conv / Reset	Interest rate / Dividend	Distribution frequency	Last price
Macquarie Group Limited	MQGPG	1,500.0	Convertible Preference Shares and Capital Nc	17-Sep-2024	\$100.00	15-Dec-2031	6.82%	Qtrly	\$103.27
National Australia Bank Limited	NABPK	1,000.0	Convertible Preference Shares and Capital Nc	07-Jun-2024	\$100.00	17-Mar-2032	6.78%	Qtrly	\$104.39
Suncorp Group Limited	SUNPJ	360.0	Convertible Preference Shares and Capital Nc	15-May-2024	\$100.00	17-Jun-2030	6.98%	Qtrly	\$102.60
Insurance Australia Group Limited	IAGPF	350.0	Convertible Preference Shares and Capital Nc	27-Mar-2024	\$100.00	15-Dec-2030	7.37%	Qtrly	\$104.60
Bendigo and Adelaide Bank Limited	BENPI	300.0	Convertible Preference Shares and Capital Nc	26-Mar-2024	\$100.00	13-Dec-2030	7.38%	Qtrly	\$104.96
Australia and New Zealand Banking Group Limited	AN3PL	1,700.0	Convertible Preference Shares and Capital Nc	21-Mar-2024	\$100.00	20-Mar-2031	7.19%	Qtrly	\$103.86
Westpac Banking Corporation	WBCPM	1,750.0	Convertible Preference Shares and Capital Nc	19-Dec-2023	\$100.00	22-Sep-2031	7.41%	Qtrly	\$105.20
Judo Capital Holdings Limited	JDOPA	75.0	Convertible Preference Shares and Capital Nc	17-Nov-2023	\$100.00	16-Feb-2029	10.30%	Qtrly	\$113.30
National Australia Bank Limited	NABPJ	1,250.0	Convertible Preference Shares and Capital Nc	15-Sep-2023	\$100.00	17-Sep-2030	6.98%	Qtrly	\$103.61
Commonwealth Bank of Australia	CBAPM	1,550.0	Convertible Preference Shares and Capital Nc	13-Jun-2023	\$100.00	17-Jun-2030	7.17%	Qtrly	\$105.24
Challenger Limited	CGFPD	350.0	Convertible Preference Shares and Capital Nc	06-Apr-2023	\$100.00	25-May-2029	7.59%	Qtrly	\$104.65
Australia and New Zealand Banking Group Limited	AN3PK	1,500.0	Convertible Preference Shares and Capital Nc	27-Mar-2023	\$100.00	20-Mar-2030	7.04%	Qtrly	\$102.93
Insurance Australia Group Limited	IAGPE	495.0	Convertible Preference Shares and Capital Nc	23-Dec-2022	\$99.00	15-Jun-2029	7.67%	Qtrly	\$104.29

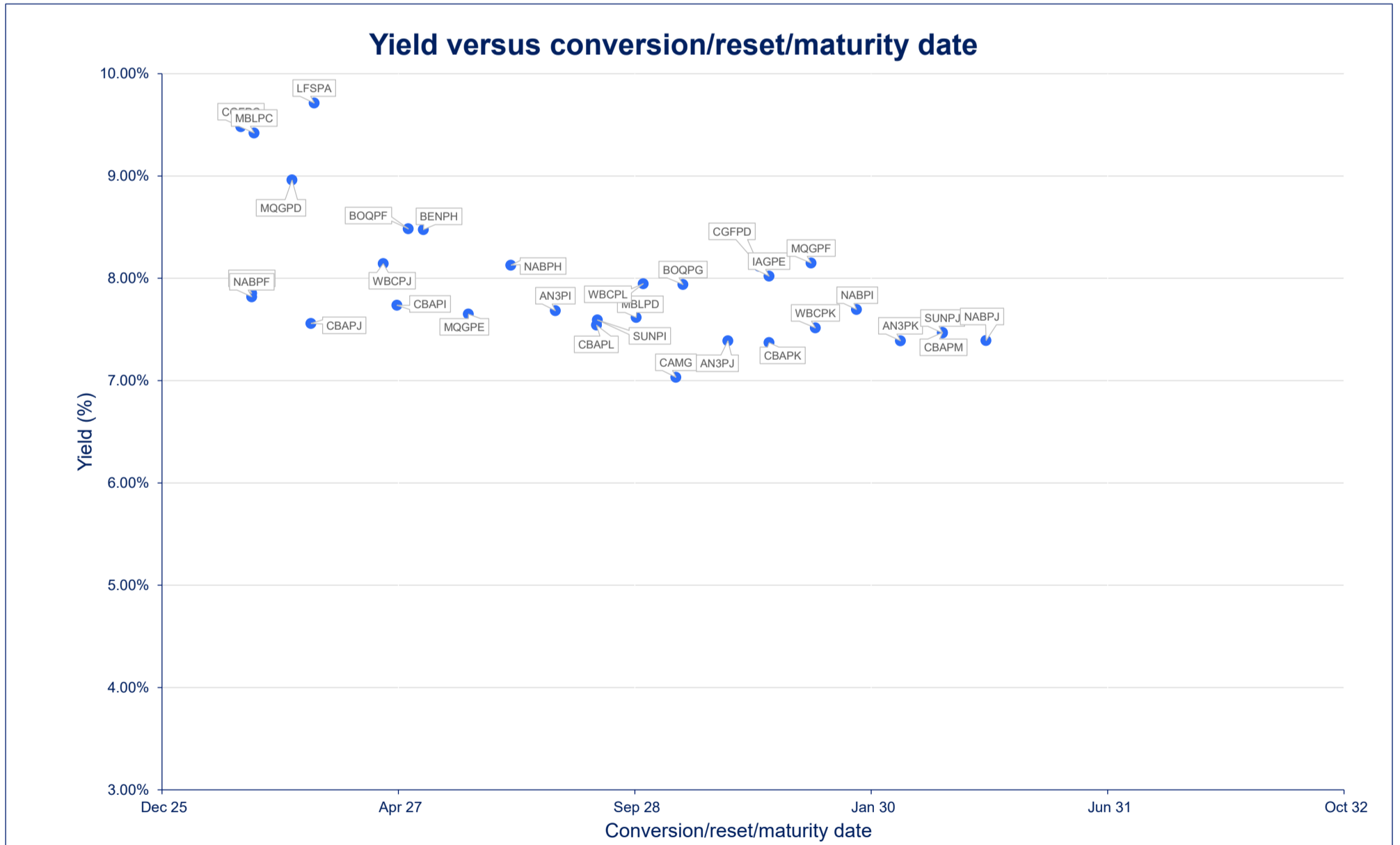
*BBSW = Bank Bill Swap Rate

† As of the date of this report this security has not traded, the Last Price reflects the Issue Price

Most actively traded securities by value

ASX code	Security type	Value (\$)	Value (%)	Volume	Volume (%)
NABPH	Convertible Preference Shares and Capital Notes	33,216,085	5.43%	322,745	4.26%
AN3PL	Convertible Preference Shares and Capital Notes	31,736,725	5.18%	304,046	4.01%
WBCPM	Convertible Preference Shares and Capital Notes	30,721,429	5.02%	289,485	3.82%
NABPF	Convertible Preference Shares and Capital Notes	28,038,721	4.58%	279,273	3.68%
WBCPJ	Convertible Preference Shares and Capital Notes	27,406,334	4.48%	268,189	3.54%
Total Top 5		151,119,294.90	24.68%	1,463,738	19.31%

Yield versus conversion/reset/maturity date





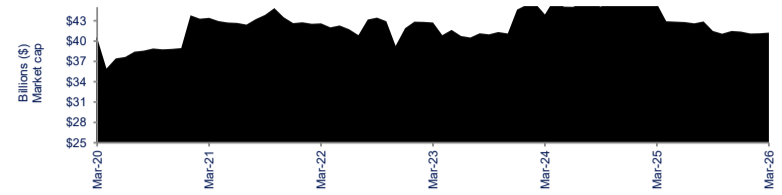
Hybrids:

Monthly update - March 2026

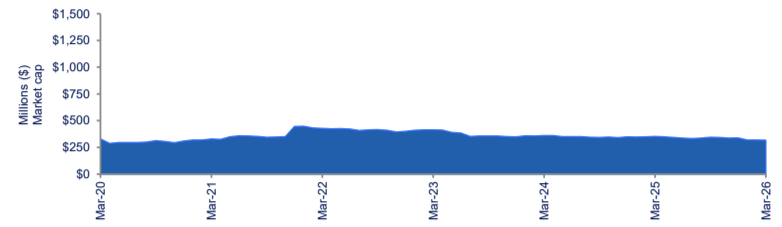


Performance and trading activity breakdown by category

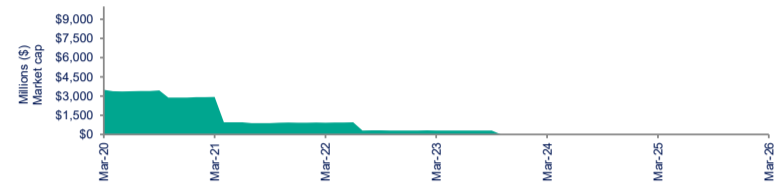
Convertible preference shares and capital notes	Last 12 months			Last month	
	Mar-25	Mar-26	% change	Feb-26	% change
Market cap (\$m)	42,925.6	40,694.5	-5.2%	41,252.2	-1.4%
Number listed (actual)	47	43	-8.5%	43	0.0%
Monthly volume	7,405,116	5,961,067	-19.5%	5,015,628	18.8%
Monthly trades	42,523	48,924	15.1%	44,924	8.9%
Monthly value (\$m)	762.3	608.6	-20.2%	518.4	17.4%



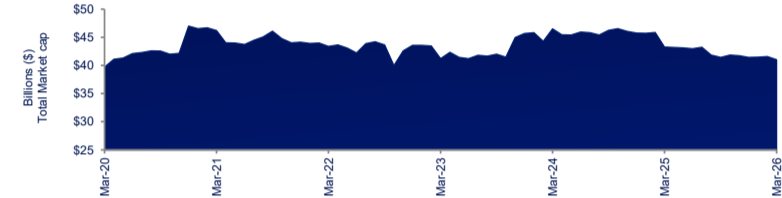
Convertible bonds	Last 12 months			Last month	
	Mar-25	Mar-26	% change	Feb-26	% change
Market cap (\$m)	348.1	317.1	-8.9%	316.8	0.1%
Number listed (actual)	8	7	-12.5%	7	0.0%
Monthly volume	598,158	1,617,848	170.5%	551,633	193.3%
Monthly trades	372	286	-23.1%	355	-19.4%
Month value (\$m)	3.1	3.6	16.2%	3.7	-2.5%



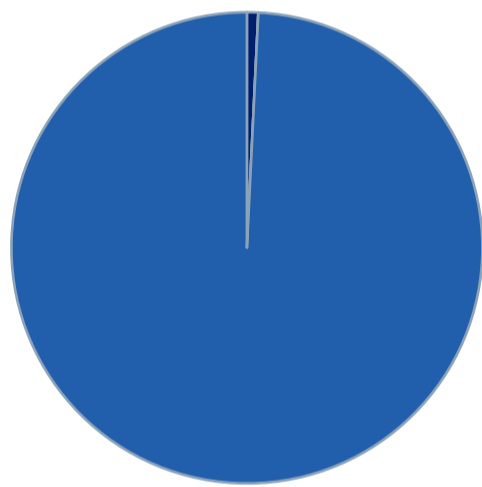
Hybrid securities	Last 12 months			Last month	
	Mar-25	Mar-26	% change	Feb-26	% change
Market cap (\$m)	-	-	n/a	-	n/a
Number listed (actual)	-	-	n/a	-	n/a
Monthly volume	-	-	n/a	-	n/a
Monthly trades	-	-	n/a	-	n/a
Monthly value (\$m)	-	-	n/a	-	n/a



Total hybrid market	Last 12 months			Last month	
	Mar-25	Mar-26	% change	Feb-26	% change
Market cap (\$m)	43,273.7	41,011.5	-5.2%	41,569.0	-1.3%
Number listed (actual)	55	50	-9.1%	50	0.0%
Monthly volume	8,003,274	7,578,915	-5.3%	5,567,261	36.1%
Monthly trades	42,895	49,210	14.7%	45,279	8.7%
Monthly value (\$m)	765.4	612.2	-20.0%	522.2	17.2%

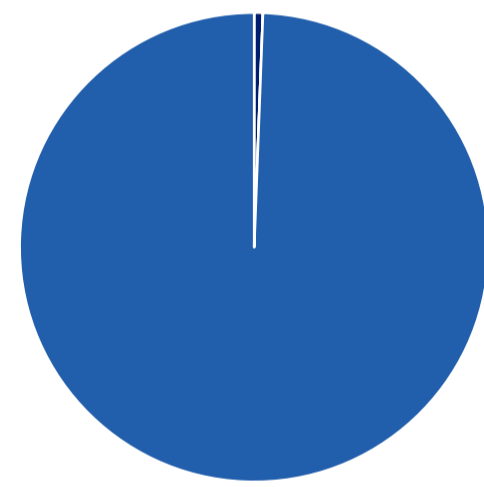


Hybrids mkt cap breakdown by type



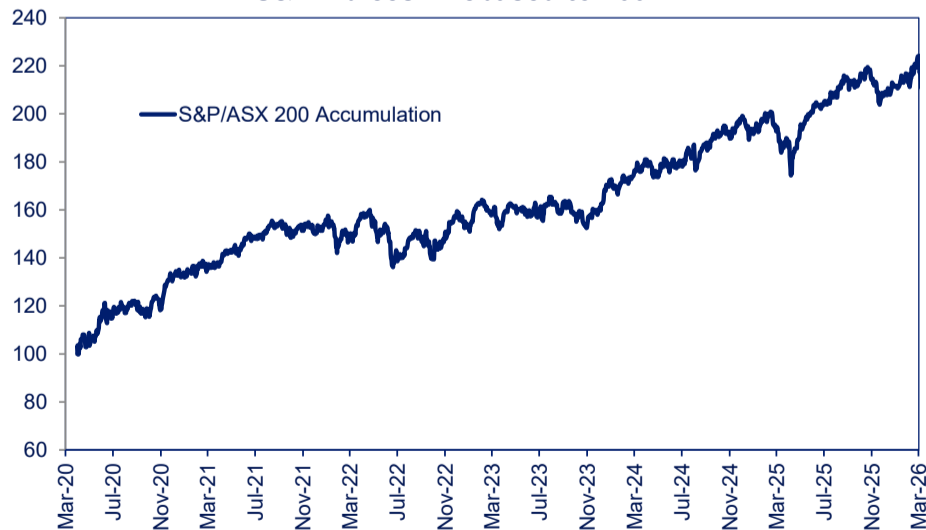
- Convertible Bonds, \$317 m
- Hybrid Securities, \$ m
- Convertible Preference Shares and Capital Notes, \$40,694 m

Hybrids breakdown by traded value

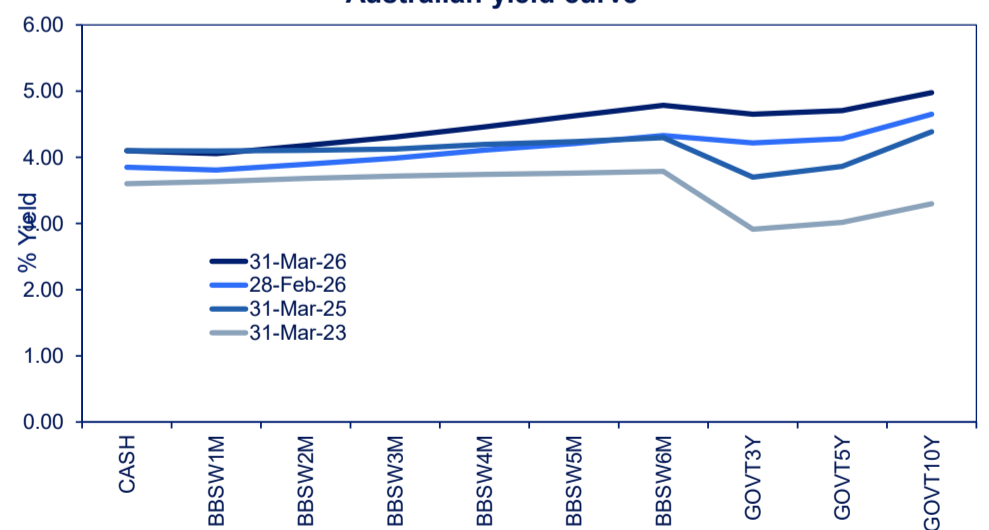


- Convertible Bonds, \$3,646 k
- Hybrid Securities, \$ k
- Convertible Preference Shares and Capital Notes, \$608,559 k

S&P indices - Rebased to 100



Australian yield curve





Spotlight on hybrids:

Monthly update - March 2026



ASX profiles			Detail								Activity					Prices				Returns	
ASX code	Issuer	Description	ASX listed date	Maturity / Conv / Reset	Coupon ²	Payment frequency	Payment rank	Issuer type	Announced Ex-date	Announced payment date	Mkt cap (\$m)	Traded value (\$)	Traded volume	Number of trades	Monthly liquidity % ³	Last *	Year high	Year low	Yield (%) ¹	1 month price return	1 year price return
Convertible bonds																					
CAMG	Clime Capital Limited	Convert Bond 6.50% 30-11-28 Mth Red	08-Dec-17	30-Nov-28	6.50%	Qtrly	Sr Unsecured	Financial Services	01-Apr-26	16-Apr-26	\$ 39.12	\$ 1,477,289.97	1,487,005	58	3.78%	0.99	1.02	0.99	7.03%	-0.70%	-0.50%
ECPGA	ECP Emerging Growth Limited	Convert Bond 6.50% 11-04-27 Qly Sub Red T-4-24	19-Apr-22	11-Apr-27	5.50%	Qtrly	Sr Unsecured	Financial Services			\$ 10.71	\$ 74,997.53	53,041	4	0.70%	1.42	1.47	1.40	n/a	1.07%	-1.05%
FIGA	Flagship Investments Limited	Convert Bond 6.50% 01-10-26 Qly Red	04-Oct-21	01-Oct-26	5.50%	Qtrly	Sr Unsecured	Financial Services			\$ 19.93	\$ 144,998.39	54,200	7	0.73%	2.69	2.75	2.60	n/a	1.13%	1.51%
GFLGA	Global Masters Fund Limited	Convert Bond 5.5% 24-11-26 Qly Red Step T-11-24	29-Nov-21	24-Nov-26	5.50%	Qtrly	Sr Unsecured	Funds & Trusts			\$ 9.78	\$ -	-	-	0.00%	3.67	3.80	3.60	n/a	0.00%	0.55%
NACGA	Naos Ex-50 Opportunities Company Limited	Convert Bond 6.50% 30-09-27 Semi Red Step T-09-26	20-Nov-20	30-Sep-26	6.50%	S/A	Sr Unsecured	Financial Services			\$ 17.15	\$ 323,005.90	3,304	8	1.88%	98.00	98.35	88.00	n/a	0.00%	8.65%
NCCGA	Naos Emerging Opportunities Company Limited	Convert Bond 4.50% 30-09-28 Semi Non-Cum Red Step	20-Apr-21	30-Sep-28	4.50%	S/A	Sr Unsecured	Financial Services			\$ 19.57	\$ 139,958.00	1,580	5	0.72%	85.10	89.50	79.01	n/a	-3.41%	7.72%
NFNG	Nufarm Finance (NZ) Limited	Convert Bond 6-Bbsw+3.90% Perp Sub Non-Cum Exh Stp	27-Nov-06	N/A	7.63%	S/A	Jr Subordinated	Chemicals	02-Apr-26	15-Apr-26	\$ 200.80	\$ 1,485,423.49	18,718	204	0.74%	80.00	94.80	77.00	11.42%	0.63%	-14.53%
Hybrid securities																					
Converting preference shares and capital notes																					
AN3PI	Australia and New Zealand Banking Group Lim	Cap Note 3-Bbsw+3.00 Perp Non-Cum Red T-03-28	21-Dec-22	20-Mar-28	7.29%	Qtrly	Jr Subordinated	Banks	09-Jun-26	22-Jun-26	\$ 1,534.05	\$ 22,893,530.09	223,573	2,161	1.49%	102.27	105.24	100.87	7.68%	-1.19%	-1.12%
AN3PJ	Australia and New Zealand Banking Group Lim	Cap Note 3-Bbsw+2.70% Perp Non-Cum Red T-03-29	21-Dec-22	20-Mar-29	6.99%	Qtrly	Jr Subordinated	Banks	09-Jun-26	22-Jun-26	\$ 1,339.61	\$ 17,106,063.52	167,104	1,554	1.28%	102.26	104.88	99.85	7.39%	-1.32%	-0.43%
AN3PK	Australia and New Zealand Banking Group Lim	Cap Note 3-Bbsw+2.75% Perp Non-Cum Red T-03-30	27-Mar-23	20-Mar-30	7.04%	Qtrly	Jr Subordinated	Banks	09-Jun-26	22-Jun-26	\$ 1,543.95	\$ 19,251,342.83	186,628	1,411	1.25%	102.93	105.89	100.00	7.39%	-1.60%	-0.74%
AN3PL	Australia and New Zealand Banking Group Lim	Cap Note 3-Bbsw+2.90% Perp Non-Cum Red T-03-31	21-Mar-24	20-Mar-31	7.19%	Qtrly	Jr Subordinated	Banks	09-Jun-26	22-Jun-26	\$ 1,765.62	\$ 31,736,725.35	304,046	1,934	1.80%	103.86	106.51	100.30	7.47%	-1.71%	-0.72%
AYUPA	Australian Unity Limited	Mci Cap Note 5.00% Perp Semi Non-Cum	04-Jan-21	N/A	5.00%	S/A	Preferred	Managed Care	02-Apr-26	15-Apr-26	\$ 533.01	\$ 11,427,552.91	159,938	785	2.14%	69.28	89.00	67.51	7.22%	-8.84%	-17.72%
BENPH	Bendigo and Adelaide Bank Limited	Cap Note 3-Bbsw+3.80% Perp Non-Cum Red T-06-27	01-Dec-20	15-Jun-27	7.97%	Qtrly	Jr Subordinated	Banks	02-Jun-26	16-Jun-26	\$ 513.75	\$ 13,794,404.33	135,354	1,071	2.69%	102.25	105.39	101.25	8.48%	-1.55%	-1.30%
BENPI	Bendigo and Adelaide Bank Limited	Cap Note 3-Bbsw+3.20% Perp Non-Cum Red T-12-30	26-Mar-24	13-Dec-30	7.38%	Qtrly	Jr Subordinated	Banks	01-Jun-26	15-Jun-26	\$ 314.88	\$ 5,349,813.03	51,235	486	1.70%	104.96	107.00	101.00	7.69%	0.25%	1.12%
BOQPF	Bank of Queensland Limited	Cap Note 3-Bbsw+3.80% Perp Non-Cum Red T-05-27	01-Dec-20	14-May-27	7.76%	Qtrly	Jr Subordinated	Banks	28-Apr-26	15-May-26	\$ 267.10	\$ 5,616,528.60	54,888	362	2.10%	102.73	104.44	101.95	8.48%	0.03%	-1.15%
BOQPG	Bank of Queensland Limited	Cap Note 3-Bbsw+3.40% Perp Non-Cum Red T-12-28	15-Nov-22	15-Dec-28	7.57%	Qtrly	Jr Subordinated	Banks	27-May-26	15-Jun-26	\$ 416.40	\$ 5,390,809.52	52,052	961	1.29%	104.10	105.97	100.40	7.94%	0.68%	-0.14%
CBAPI	Commonwealth Bank of Australia	Cap Note 3-Bbsw+3.00% Perp Non-Cum Red T-04-27	15-Nov-19	20-Apr-27	7.17%	Qtrly	Jr Subordinated	Banks	04-Jun-26	15-Jun-26	\$ 1,677.23	\$ 27,262,773.95	268,501	1,916	1.63%	101.65	105.00	100.01	7.74%	-1.17%	-0.83%
CBAPJ	Commonwealth Bank of Australia	Cap Note 3-Bbsw+2.75% Perp Non-Cum Red T-10-26	06-Apr-21	20-Oct-26	6.92%	Qtrly	Jr Subordinated	Banks	04-Jun-26	15-Jun-26	\$ 1,188.26	\$ 18,812,585.20	186,774	1,435	1.58%	100.70	103.60	100.05	7.56%	-1.28%	-1.06%
CBAPK	Commonwealth Bank of Australia	Cap Note 3-Bbsw+2.75% Perp Non-Cum Red T-06-29	01-Apr-22	15-Jun-29	6.92%	blo	Jr Subordinated	Banks	04-Jun-26	15-Jun-26	\$ 1,807.05	\$ 19,451,176.43	188,873	1,327	1.08%	103.26	106.50	100.41	7.37%	-0.85%	-0.23%
CBAPL	Commonwealth Bank of Australia	Cap Note 3-Bbsw+2.85% Perp Non-Cum Red T-06-28	16-Nov-22	15-Jun-28	7.02%	Qtrly	Jr Subordinated	Banks	04-Jun-26	15-Jun-26	\$ 1,817.37	\$ 24,127,373.25	235,267	1,686	1.33%	102.25	105.00	100.10	7.54%	-1.24%	-0.73%
CBAPM	Commonwealth Bank of Australia	Cap Note 3-Bbsw+3.00% Perp Non-Cum Red T-06-30	13-Jun-23	17-Jun-30	7.17%	Qtrly	Jr Subordinated	Banks	04-Jun-26	15-Jun-26	\$ 1,631.22	\$ 22,954,056.80	218,584	1,863	1.41%	105.24	108.00	101.81	7.47%	-0.90%	0.23%
CGFPC	Challenger Limited	Cap Note 3-Bbsw+4.60% Perp Non-Cum Red T-05-26	26-Nov-20	25-May-26	8.59%	Qtrly	Jr Subordinated	Life Insurance	14-May-26	25-May-26	\$ 386.31	\$ 6,991,103.52	69,800	599	1.81%	100.34	105.10	99.88	9.48%	-0.01%	-2.81%
CGFPD	Challenger Limited	Cap Note 3-Bbsw+3.60% Perp Non-Cum Red T-05-29	06-Apr-23	25-May-29	7.59%	Qtrly	Jr Subordinated	Life Insurance	14-May-26	25-May-26	\$ 366.28	\$ 5,568,651.51	53,251	569	1.52%	104.65	107.47	102.00	8.12%	0.01%	-1.26%
CINPA	Carlton Investments Limited	7% Cumulative Preference	15-Mar-86	N/A	7.00%	Annual	Preferred	Financial Services			\$ 0.19	\$ -	-	-	0.00%	2.30	2.33	2.30	n/a	0.00%	5.02%
GC1PA	Glennon Small Companies Limited	Crv Pref 6.80% 30-9-30 Semi Cum Exc Red Res T-3-21	07-Dec-20	30-Sep-30	5.60%	S/A	Subordinated	Financial Services			\$ 4.88	\$ 40,562.80	4,409	1	0.83%	9.20	10.85	9.20	n/a	-10.68%	-12.38%
IAGPE	Insurance Australia Group Limited	Cap Note 3-Bbsw+3.50% Perp Non-Cum Red T-06-29	23-Dec-22	15-Jun-29	7.67%	Qtrly	Jr Subordinated	Property & Casualty Insurance	02-Jun-26	15-Jun-26	\$ 521.45	\$ 4,668,114.46	44,703	784	0.90%	104.29	107.50	101.00	8.02%	-1.58%	-0.87%
IAGPF	Insurance Australia Group Limited	Cap Note 3-Bbsw+3.20% Perp Non-Cum Red T-12-30	27-Mar-24	15-Dec-30	7.37%	Qtrly	Jr Subordinated	Property & Casualty Insurance	02-Jun-26	15-Jun-26	\$ 366.10	\$ 5,146,009.68	49,222	515	1.41%	104.60	106.98	101.06	7.71%	-1.78%	0.11%
JDOPA	Judo Capital Holdings Limited	Cap Note 3-Bbsw+6.50% Perp Non-Cum Red T-02-29	17-Nov-23	16-Feb-29	10.30%	Qtrly	Jr Subordinated	Banks	07-May-26	18-May-26	\$ 84.98	\$ 2,114,118.15	18,776	233	2.49%	113.30	116.50	108.80	n/a	-0.35%	0.76%
LFSPA	Latitude Group Holdings Limited	Cap Note 3-Bbsw+4.75% Perp Non-Cum Red T-10-26	29-Sep-21	27-Oct-26	8.56%	Qtrly	Subordinated	Life Insurance	16-Apr-26	28-Apr-26	\$ 139.22	\$ 5,864,265.03	58,439	308	4.21%	100.20	102.25	90.00	9.71%	0.19%	2.71%
MBLPC	Macquarie Bank Limited	Cap Note 3-Bbsw+4.70% Perp Non-Cum Red T-06-26	03-Jun-20	22-Jun-26	9.01%	Qtrly	Jr Subordinated	Banks			\$ 650.64	\$ 13,393,000.78	131,286	1,132	2.06%	101.50	104.84	100.22	9.42%	-2.32%	-0.49%
MBLPD	Macquarie Bank Limited	Cap Note 3-Bbsw+2.90% Perp Non-Cum Red T-09-28	30-Aug-21	07-Sep-28	6.98%	Qtrly	Jr Subordinated	Banks			\$ 668.01	\$ 9,925,774.88	96,793	715	1.49%	102.01	105.30	100.22	7.62%	-0.86%	-1.01%
MQGPD	Macquarie Group Limited	Cap Note 3-Bbsw+4.15% Perp Non-Cum Red T-09-26	28-Mar-19	10-Sep-26	8.22%	Qtrly	Jr Subordinated	Diversified Banks			\$ 912.46	\$ 21,172,358.83	210,218	1,638	2.32%	100.77	104.86	100.40	8.96%	-0.47%	-2.68%
MQGPE	Macquarie Group Limited	Cap Note 3-Bbsw+2.90% Perp Non-Cum Red T-09-27	18-Mar-21	18-Sep-27	7.16%	Qtrly	Jr Subordinated	Diversified Banks			\$ 735.81	\$ 10,800,003.22	106,424	845	1.47%	101.43	104.00	100.25	7.65%	-1.44%	-1.19%
MQGPF	Macquarie Group Limited	Cap Note 3-Bbsw+3.70% Perp Non-Cum Red T-09-29	18-Jul-22	12-Sep-29	7.88%	Qtrly	Jr Subordinated	Diversified Banks			\$ 789.08	\$ 15,143,193.06	143,810	826	1.92%	105.21	108.75	102.99	8.15%	-0.60%	-1.35%
MQGPG	Macquarie Group Limited	Cap Note 3-Bbsw+2.65% Perp Non-Cum Red T-12-31	17-Sep-24	15-Dec-31	6.82%	Qtrly	Jr Subordinated	Diversified Banks			\$ 1,549.05	\$ 21,480,280.93	208,185	1,697	1.39%	103.27	105.51	99.99	7.27%	-0.25%	-0.17%
NABPF	National Australia Bank Limited	Cap Note 3-Bbsw+4.00% Perp Non-Cum Red T-06-26	21-Mar-19	17-Jun-26	8.18%	Qtrly	Jr Subordinated	Banks	04-Jun-26	17-Jun-26	\$ 1,881.76	\$ 28,038,721.27	279,273	1,895	1.49%	100.41	103.91	99.95	7.82%	-1.63%	-2.37%
NABPH	National Australia Bank Limited	Cap Note 3-Bbsw+3.50% Perp Non-Cum Red T-12-27	18-Dec-20	17-Dec-27	7.68%	Qtrly	Jr Subordinated	Banks	04-Jun-26	17-Jun-26	\$ 2,455.16	\$ 33,216,085.20	322,745	2,509	1.35%	102.90	105.11	101.94	8.13%	-1.67%	-1.23%
NABPI	National Australia Bank Limited	Cap Note 3-Bbsw+3.15% Perp Non-Cum Red T-12-29	08-Jul-22	17-Dec-29	7.33%	Qtrly	Jr Subordinated	Banks	04-Jun-26	17-Jun-26	\$ 2,082.00	\$ 23,613,259.89	226,018	2,542	1.13%	104.10	106.68	101.80	7.70%	-1.28%	-0.90%
NABPJ	National Australia Bank Limited	Cap Note 3-Bbsw+2.80% Perp Non-Cum Red T-09-30	15-Sep-23	17-Sep-30	6.98%	Qtrly	Jr Subordinated	Banks	04-Jun-26	17-Jun-26	\$ 1,295.13	\$ 19,662,434.06	189,495	2,065	1.52%	103.61	105.97	100.55	7.39%	-1.37%	-0.50%
NABPK	National Australia Bank Limited	Cap Note 3-Bbsw+2.60% Perp Non-Cum Red T-03-32	07-Jun-24	17-Mar-32	6.78%	Qtrly	Jr Subordinated	Banks	04-Jun-26	17-Jun-26	\$ 1,043.90	\$ 15,173,507.25	145,265	1,239	1.45%	104.39	108.53	100.05	7.14%	-1.76%	-0.11%
RHCPA	Ramsay Health Care Limited	Trans Pref 6-Bbsw+ 4.85% Perp Sub Red T-10-10	24-May-05	N/A	8.49%	S/A	Preferred	Health Care Facilities & Services	02-Apr-26	20-Apr-26	\$ 277.84	\$ 6,188,818.10	57,793	495	2.23%	106.86	109.75	103.80	9.40%	-0.68%	0.67%
SSLPA	Sietel Limited	5.0% Cumulative Preference	15-Mar-86	N/A	5.00%	Annual	Preferred	Financial Services			\$ 0.08	\$ -	-	-	0.00%	1.00	-	-	n/a	0.00%	0.00%
SUNPH	Suncorp Group Limited	Cap Note 3-Bbsw+3.00% Perp Non-Cum Red T-06-26	18-Dec-19	17-Jun-26	7.18%	Qtrly	Jr Subordinated	Property & Casualty Insurance	01-Jun-26	17-Jun-26	\$ 389.39	\$ 10,134,203.03	101,322	689	2.60%	100.10	102.56	99.84	7.85%	-1.43%	-1.20%
SUNPI	Suncorp Group Limited	Cap Note 3-Bbsw+2.90% Perp Non-Cum Red T-06-28	24-Sep-21	17-Jun-28	7.08%	Qtrly	Jr Subordinated	Property & Casualty Insurance	01-Jun-26	17-Jun-26	\$ 413.91	\$ 7,658,475.54	75,083	790	1.85%	102.20	104.75	98.50	7.59%	-0.99%	-0.34%
SUNPJ	Suncorp Group Limited	Cap Note 3-Bbsw+2.80% Perp Non-Cum Red T-06-30	15-May-24	17-Jun-30	6.98%	Qtrly	Jr Subordinated	Property & Casualty Insurance	01-Jun-26	17-Jun-26	\$ 369.36	\$ 6,640,310.11	64,374	1,198	1.80%	102.60	106.50	100.10	7.47%	-2.05%	-0.42%
WBBCPJ	Westpac Banking Corporation	Cap Note 3-Bbsw+3.40% Perp Non-Cum Red T-03-27	07-Dec-20																		