

The background of the slide is a dark blue gradient with large, stylized, overlapping letters 'A', 'S', and 'X' in various shades of blue. The letters are semi-transparent and layered, creating a sense of depth and movement. The 'A' is on the left, the 'S' is in the center, and the 'X' is on the right.

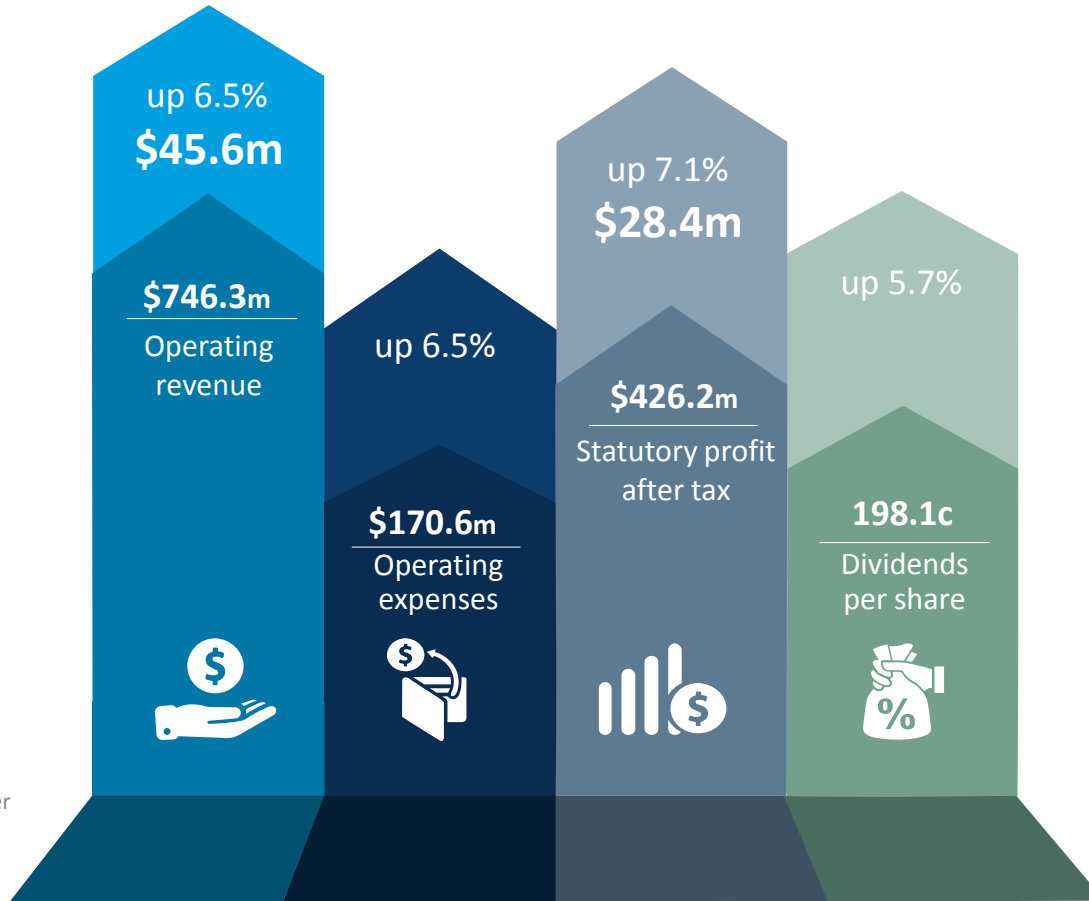
**ASX Limited**  
**2016 Annual General Meeting**

# Chairman's Address

Rick Holliday-Smith  
Chairman



# Pleasing overall performance in FY16



Revenues and expenses as per the Group segment reporting

# Chairman's Address

Rick Holliday-Smith  
Chairman



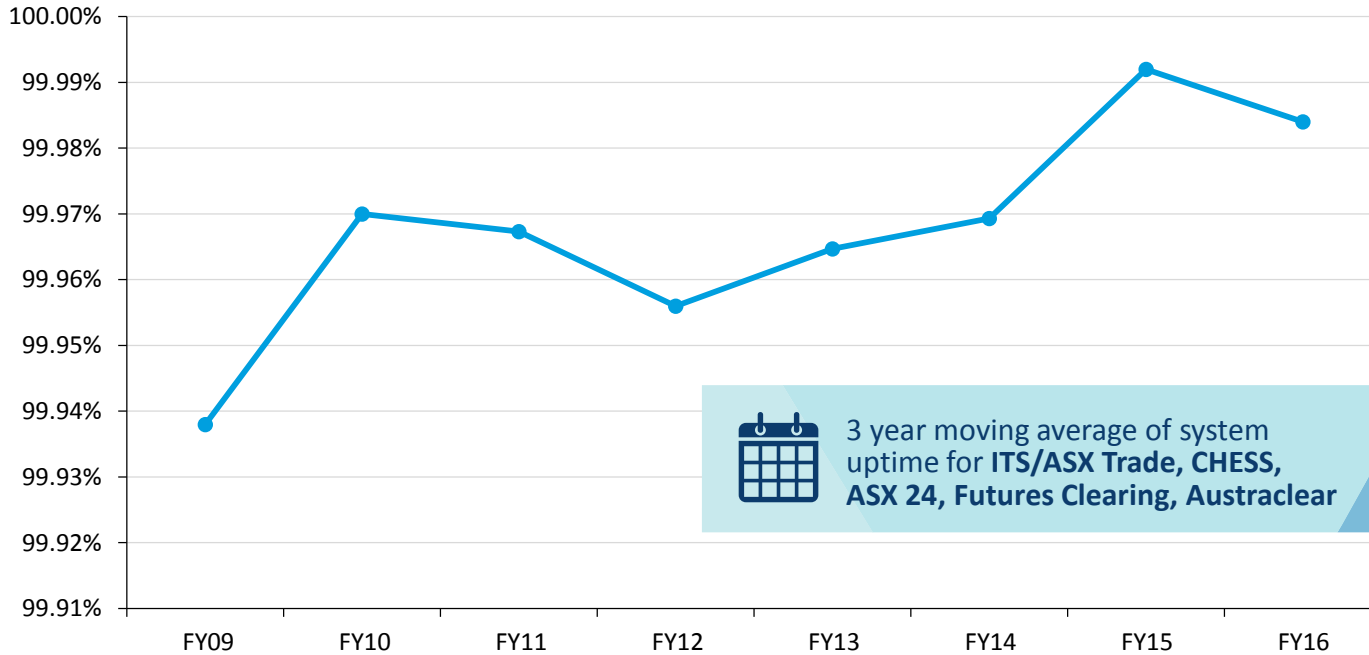
# CEO's Address

Dominic Stevens

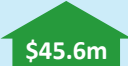
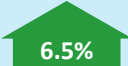



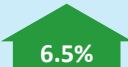



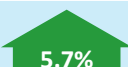
Managing Director and CEO



# High availability of systems over past 10 years

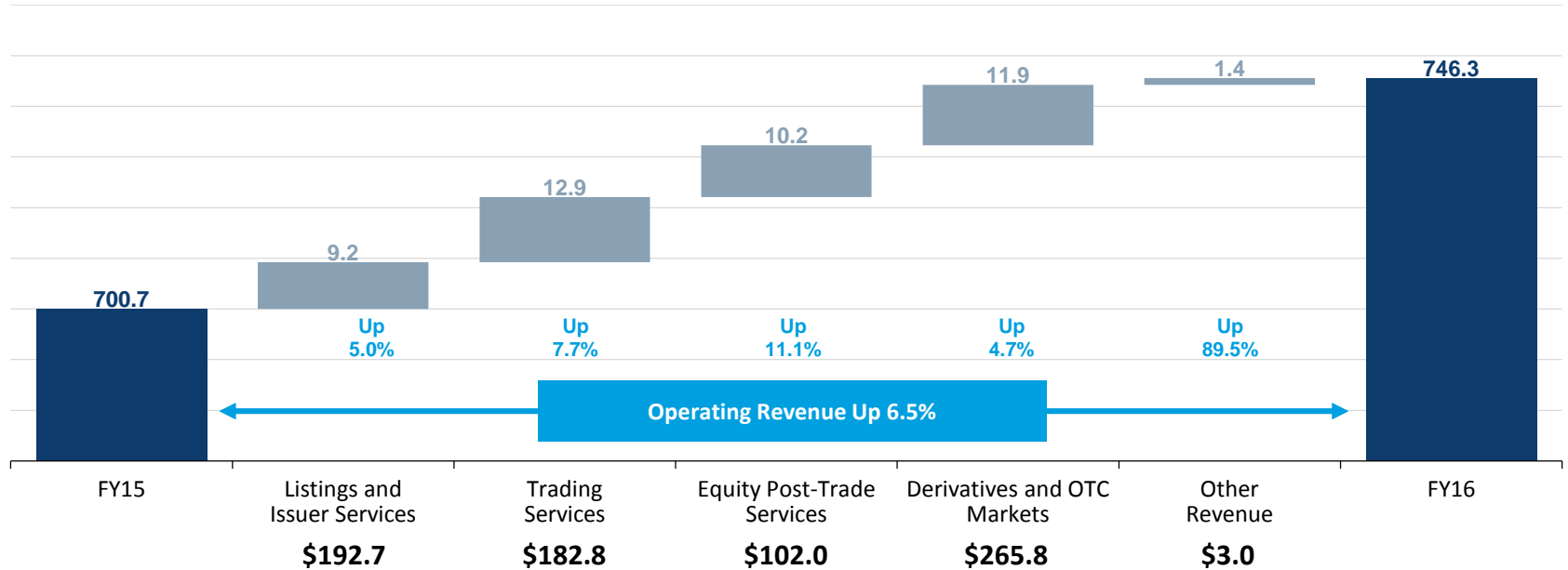


# Strong financial performance in FY16

Income statement	FY16 \$ million	Variance to FY15	
Operating Revenue	746.3	 \$45.6m	 6.5%
Operating Expenses	(170.6)	 \$10.5m	 6.5%
<b>EBITDA</b>	<b>575.7</b>	 \$35.1m	 6.5%
<b>Statutory profit after tax</b>	<b>426.2</b>	 \$28.4m	 7.1%
<b>Dividends (cents per share)</b>	<b>198.1 cents</b>	 10.7c	 5.7%
<b>EBITDA margin</b>	<b>77.1%</b>		

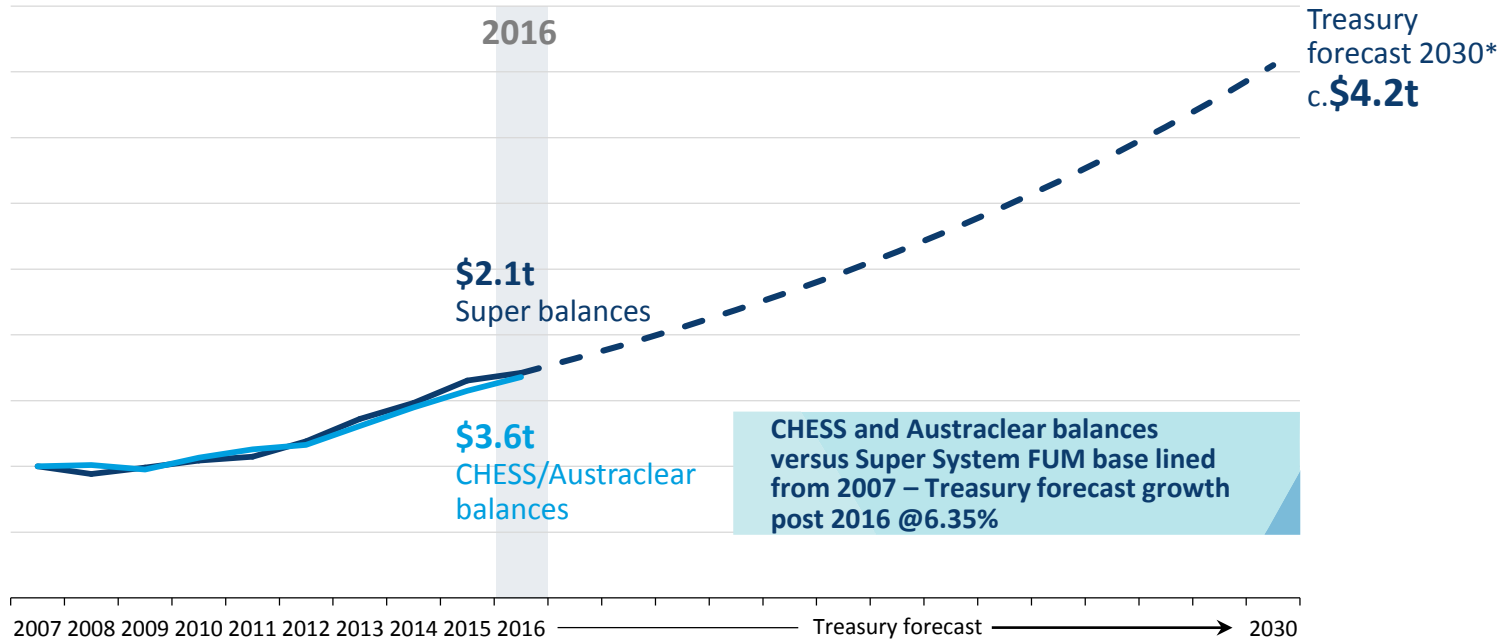
Revenues and expenses as per the Group segment reporting

# All major business lines contributing to growth (\$million)



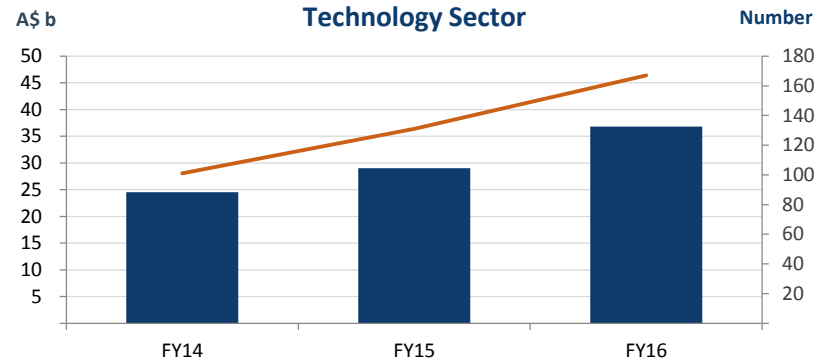
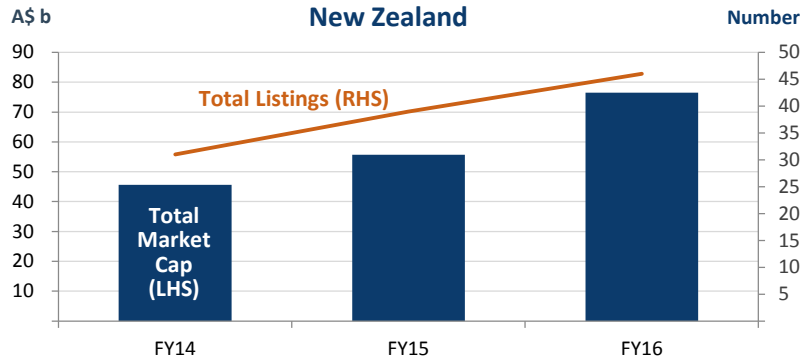


# Growing superannuation balances create increased demand for assets

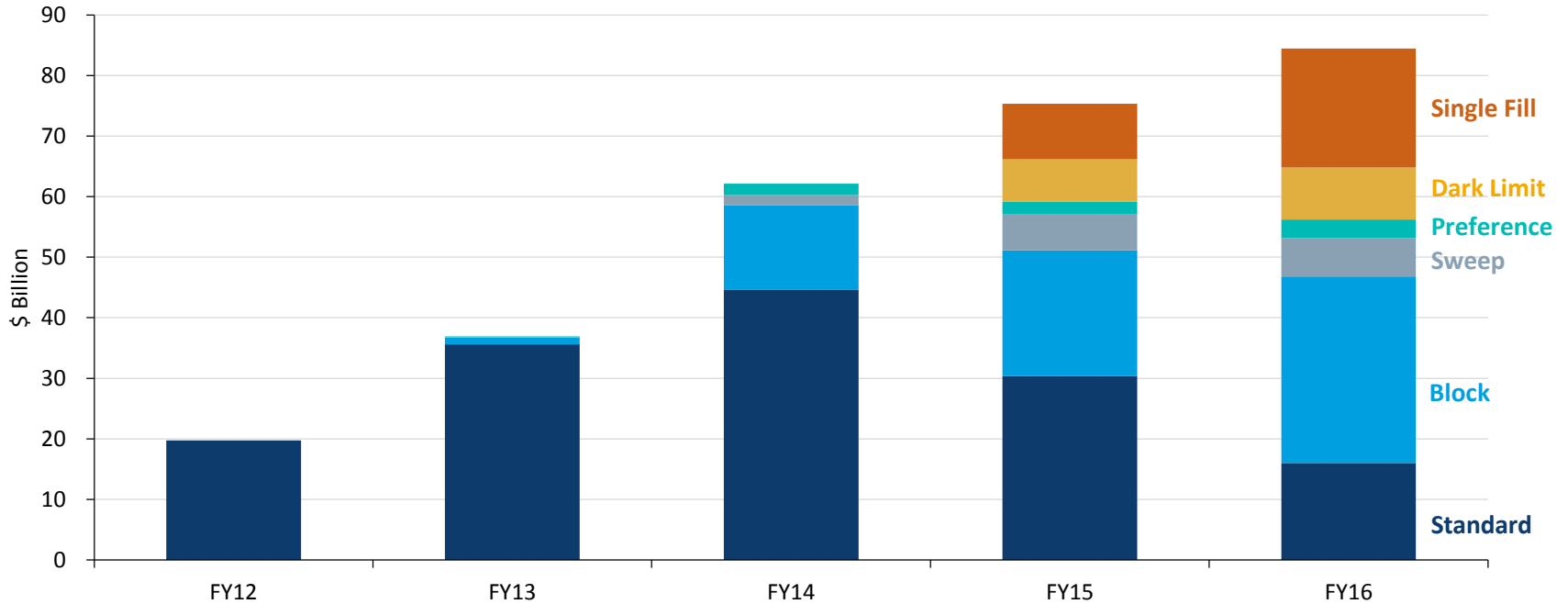


\*Projected superannuation asset balance based on Treasury forecast of \$7.75t by 2040

# Listings franchise is expanding



# Centre Point providing greater order choice for end-users

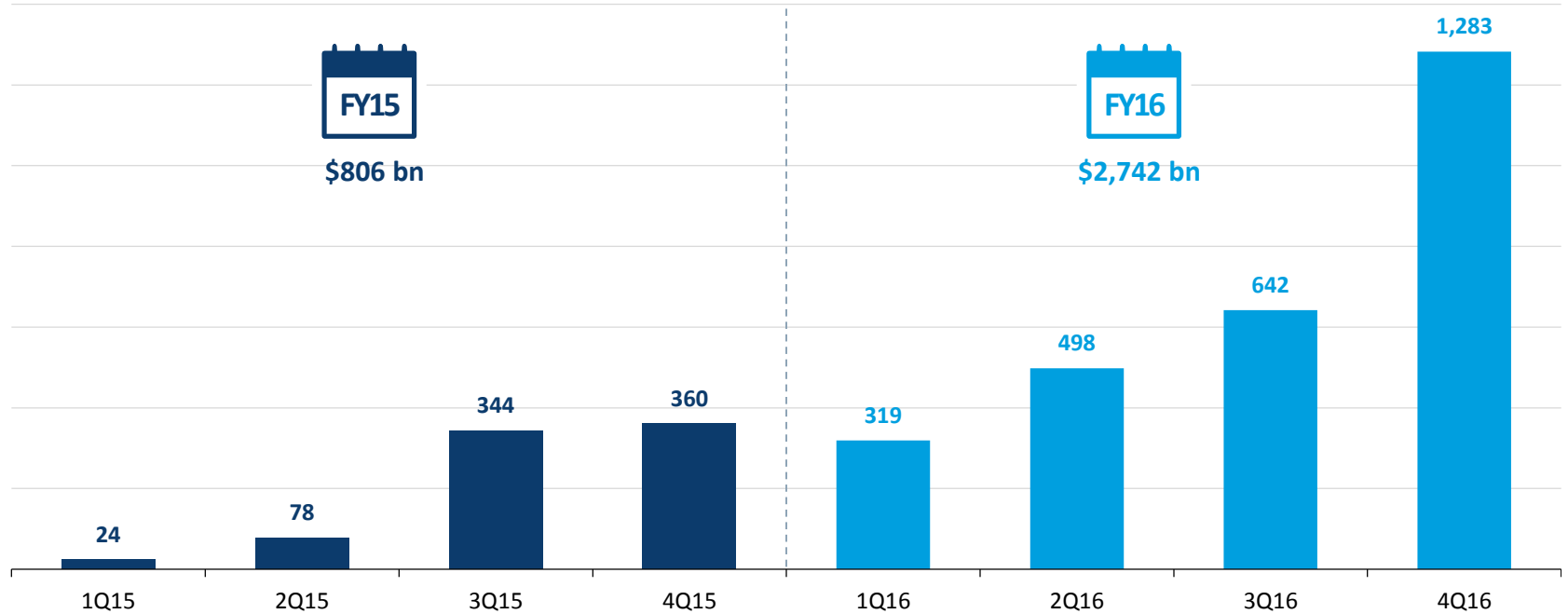


# Technical services business at the heart of Australia's financial markets

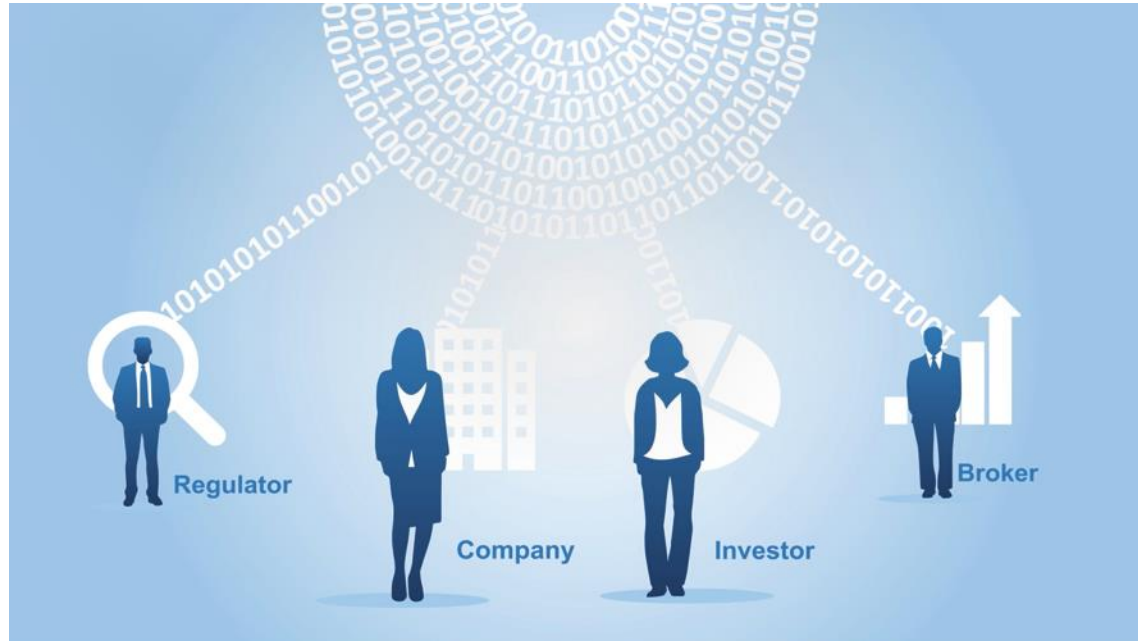


# OTC derivatives clearing volumes are growing

OTC Notional Cleared Value



# Distributed ledger technology – ‘blockchain’



# Strategy delivering results



Global leader in  
A\$ and NZ\$ markets



## Outstanding customer experience

Deepen customer engagement across all services

Deliver 24 hour service to local and global clients

Innovate in fragmented equity market



## World-class infrastructure

Upgrade technology

Lead post-trade innovation

Build global connectivity

Integrating complementary services



## Investment supermarket

Expand listings franchise

Enhance listing standards

Extend suite of investment options

# Formal Business





# Agenda Item 1

## ASX Financial Report





Agenda Item 2  
Securities Exchanges  
Guarantee Corporation  
Financial Report



## Agenda Item 3

### Election of Directors

## Agenda Item 3(a)

### Re-election of Dr Ken Henry AC - Proxy and Direct Votes (Combined)



For	Against	Open
101,812,581	1,532,746	1,583,906
97.03%	1.46%	1.51%

## Agenda Item 3(b)

### Election of Ms Melinda Conrad - Proxy and Direct Votes (Combined)



For	Against	Open
102,924,297	409,314	1,582,527
98.10%	0.39%	1.51%

# Agenda Item 4

## Remuneration Report



## Item 4 – Remuneration Report

Proxy and Direct Votes (Combined)

For	Against	Open
99,263,082	4,031,384	1,567,298
94.66%	3.84%	1.50%

# Agenda Item 5

## Grant of Performance Rights





## Item 5 – Grant of Performance Rights Proxy and Direct Votes (Combined)

For	Against	Open
101,087,124	2,216,618	1,580,381
96.38%	2.11%	1.51%

# Questions



# AGM Closed

Thank you

Please complete your  
voting card and deposit  
it at the exit



The background of the slide is a dark blue gradient with large, stylized, overlapping letters 'A', 'S', and 'X' in various shades of blue. The letters are semi-transparent and layered, creating a sense of depth and movement. The 'A' is on the left, the 'S' is in the center, and the 'X' is on the right.

**ASX Limited**  
**2016 Annual General Meeting**